

R26-CreERT2

Nomenclature	C57BL/6Smoc- <i>Gt(ROSA)26Sor</i> ^{em1(SA-FRT-2xpolyA-CAG-FRT-CreERT2-Rox-WPRE-Rox-polyA)Smoc}
Cat. NO.	NM-KI-200041
Strain State	Repository Live

Gene Summary

Gene Symbol Gt(ROSA)26Sor	Synonyms	R26, ROSA26, AV258896, Gtrg eo26, Gtrosa26, Thumpd3as1
	NCBI ID	14910
	MGI ID	104735
	Ensembl ID	ENSMUSG00000086429

Model Description

These mice harbor a SA-FRT-2xpolyA-CAG-FRT-CreERT2-Rox-WPRE-Rox-polyA cassette in the Rosa26 locus generated by homologous recombination. When crossed with a strain carrying a gene flanked by loxP sites, the flanked gene will be removed in multiple tissues after tamoxifen treatment.

Research Application: Cre recombinase tool

*Literature published using this strain should indicate: R26-CreERT2 mice (Cat. NO. NM-KI-200041) were purchased from Shanghai Model Organisms Center, Inc..

Validation Data

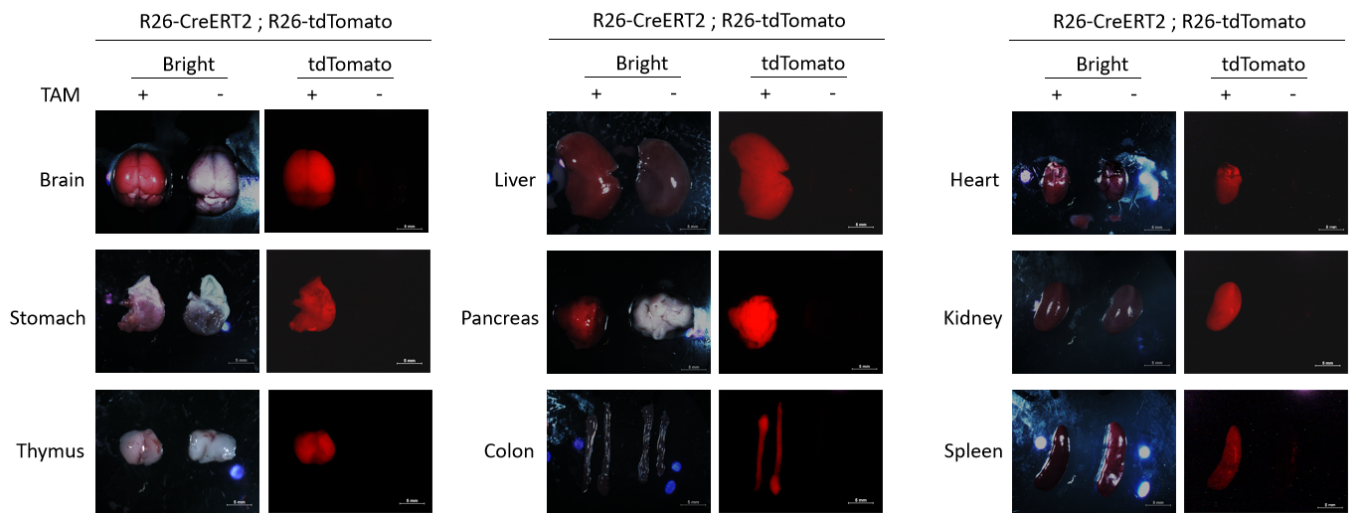


Fig1. Detection of tdTomato(red) in various tissues of R26CreERT2/+; Rosa26tdTomato/+ mice by fluorescence assay. Expression tissues include: brain, liver, stomach, thymus, pancreas, colon, heart, kidney and spleen. (For more detailed information please contact our technical advisor.)

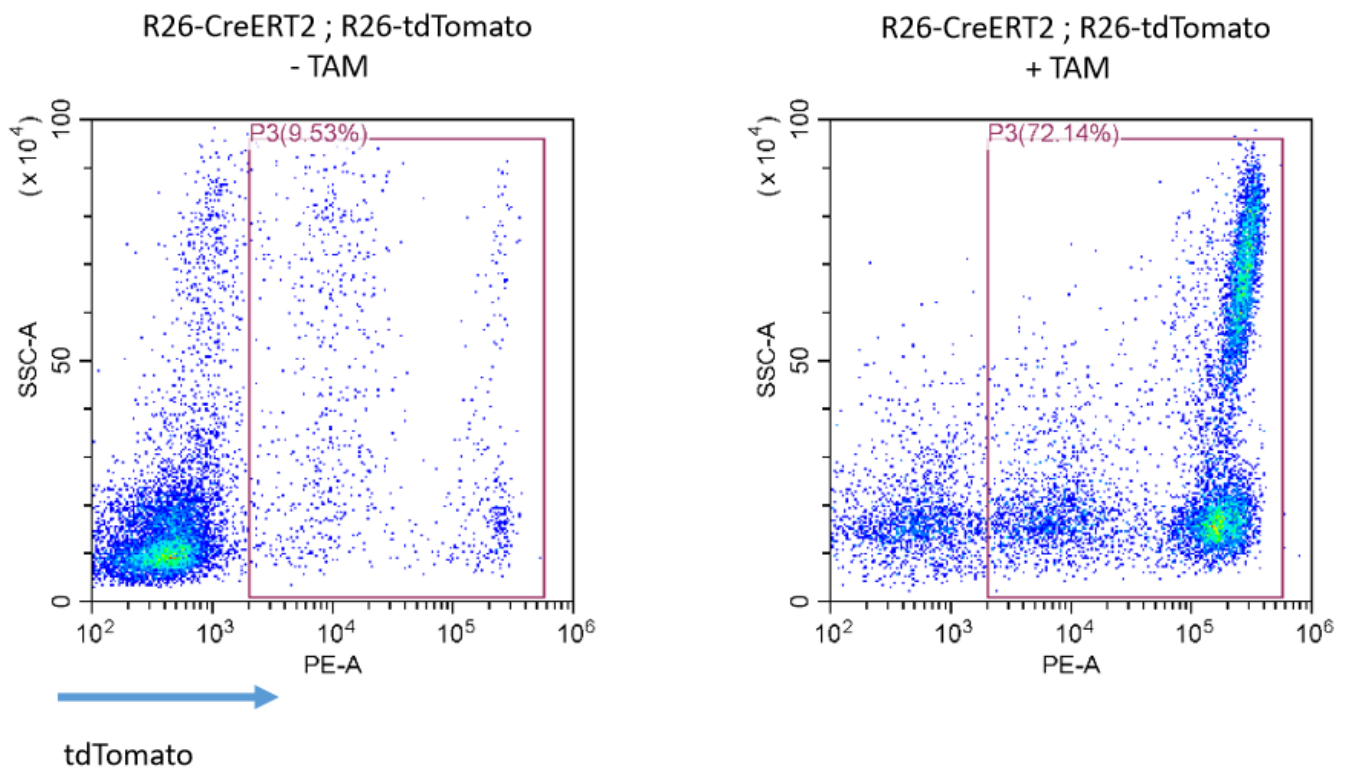


Fig2. CreERT2-mediated recombination in peripheral blood of R26CreERT2/+; Rosa26tdTomato/+ mice.