

R26-CAG-LSL-zsGreen

Nomenclature	C57BL/6Smoc- <i>Gt(ROSA)26Sor</i> ^{em1(CAG-LSL-zsGreen)Smoc}
Cat. NO.	NM-KI-200045
Strain State	Repository Live

Gene Summary

Gene Symbol Gt(ROSA)26Sor	Synonyms	R26, ROSA26, AV258896, Gtrg eo26, Gtrosa26, Thumpd3as1
	NCBI ID	14910
	MGI ID	104735
	Ensembl ID	ENSMUSG00000086429

Model Description

These mice harbor a CAG-LSL-zsGreen-polyA cassette in the Rosa26 locus generated by homologous recombination.

Research Application: Reporter mouse; This reporter mice have a loxp-flanked STOP sequence. When crossed with Cre-expressing mice, cre-mediated recombination between the two loxP sites deletes the STOP cassette and hence induces zsgreen gene expression.

*Literature published using this strain should indicate: R26-CAG-LSL-zsGreen mice (Cat. NO. NM-KI-200045) were purchased from Shanghai Model Organisms Center, Inc..

Validation Data

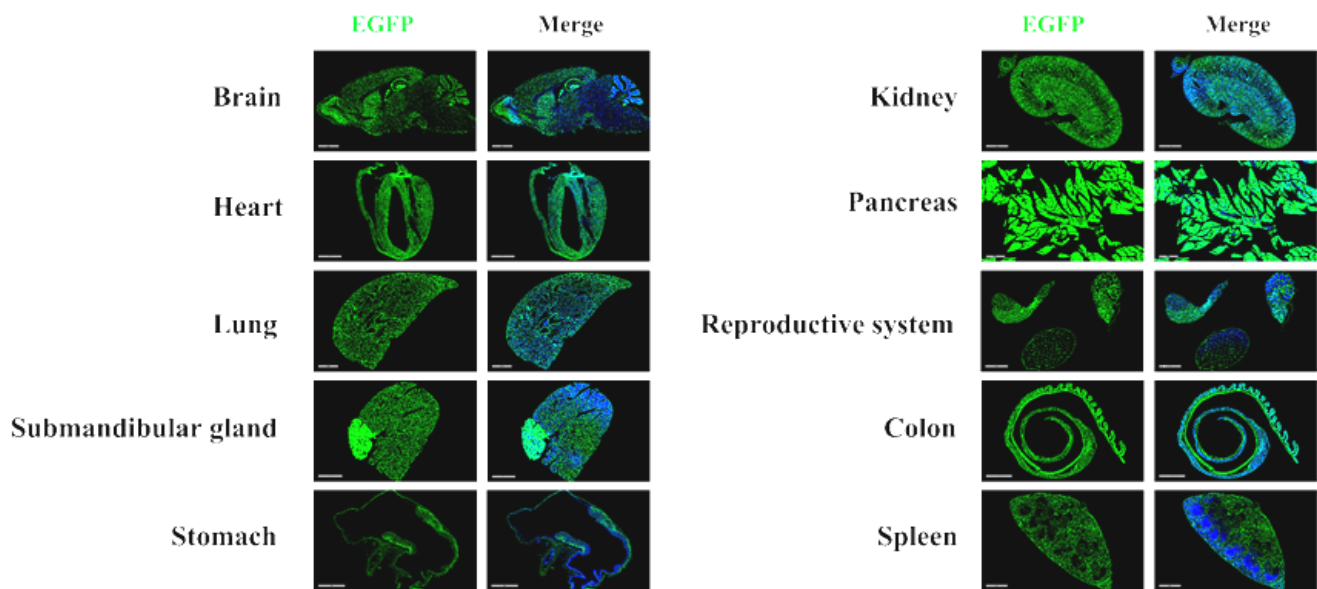


Fig. 1 Detection of ZsGreen(green) in various tissues of $Dppa3^{Cre/+}; Rosa26^{ZsGreen/+}$ mice. ZsGreen expression can be detected in the brain, heart, lung, submandibular gland, salivary gland, stomach, kidney, pancreas, testis, epididymis, colon and spleen of $Dppa3^{Cre/+}; Rosa26^{ZsGreen/+}$ mouse. (For more detailed information please contact our technical advisor.)