

# Cd19-Cre-IRES-tdTomato

<b>Nomenclature</b>	C57BL/6Smoc- <i>Cd19</i> <sup>em1(iCre-FRT-IRES-tdTomato-FRT-Wpre-polyA)Smoc</sup>
<b>Cat. NO.</b>	NM-KI-200061
<b>Strain State</b>	Repository Live

## Gene Summary

<b>Gene Symbol</b> CD19	<b>Synonyms</b>	AW495831
	<b>NCBI ID</b>	<a href="#">12478</a>
	<b>MGI ID</b>	<a href="#">88319</a>
	<b>Ensembl ID</b>	<a href="#">ENSMUSG00000030724</a>
	<b>Human Ortholog</b>	CD19

## Model Description

A iCre-FRT-IRES-tdTomato-FRT-Wpre-polyA expression cassette was knocked into the Cd19 gene.

**Research Application:** Cre recombinase tool

\*Literature published using this strain should indicate: Cd19-Cre-IRES-tdTomato mice (Cat. NO. NM-KI-200061) were purchased from Shanghai Model Organisms Center, Inc..

## Validation Data

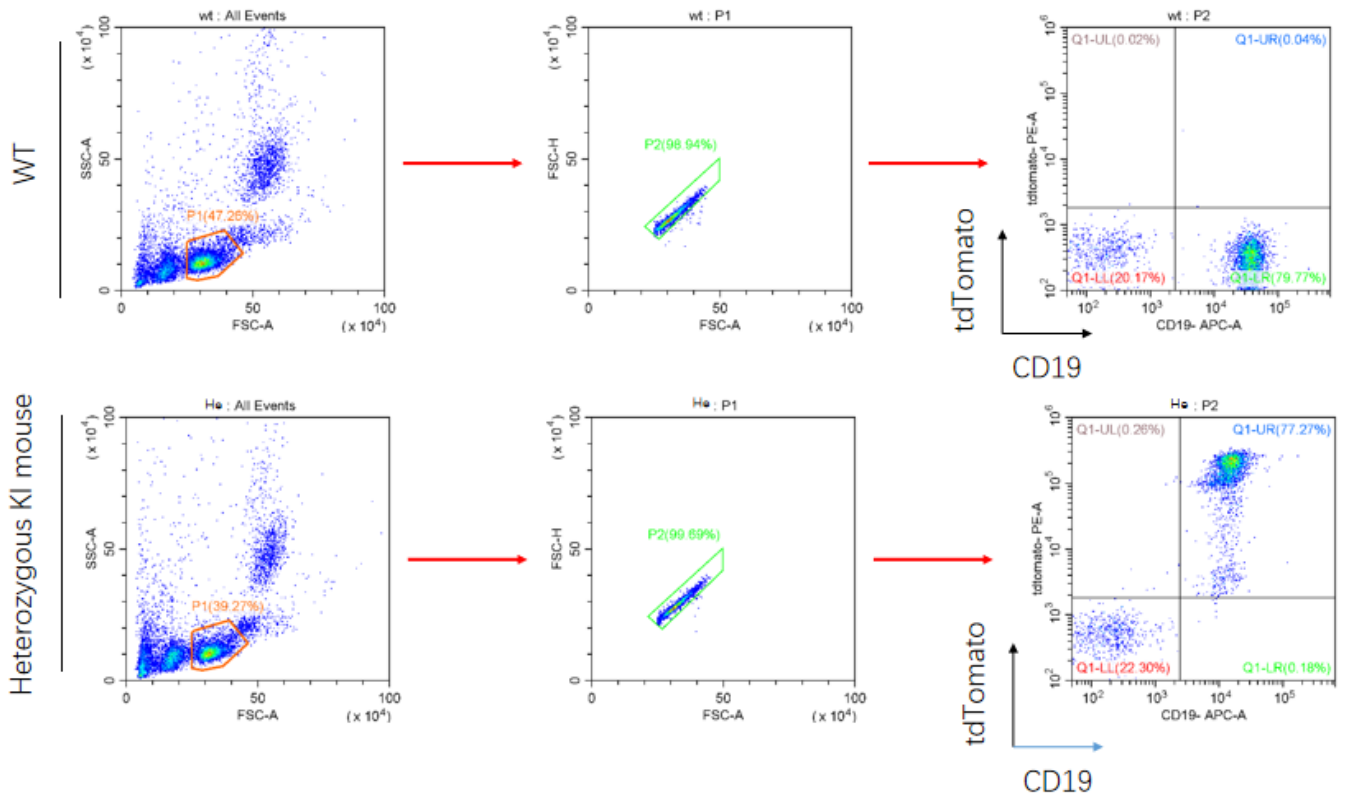


Fig1. FACS analysis of tdTomato expression in CD19+ B Cells of PBMC in the heterozygous KI mouse model.