

Slc6a3-IRES-Cre

Nomenclature	C57BL/6Smoc- <i>Slc6a3</i> ^{em1(IRES-iCre)Smoc}
Cat. NO.	NM-KI-200092
Strain State	Repository Live

Gene Summary

Gene Symbol Slc6a3	Synonyms	DAT; Dat1
	NCBI ID	13162
	MGI ID	94862
	Ensembl ID	ENSMUSG00000021609
	Human Ortholog	SLC6A3

Model Description

A IRES-iCre expression cassette was knocked into the Slc6a3 gene stop codon site.

Research Application: Cre recombinase tool

*Literature published using this strain should indicate: Slc6a3-IRES-Cre mice (Cat. NO. NM-KI-200092) were purchased from Shanghai Model Organisms Center, Inc..

Validation Data

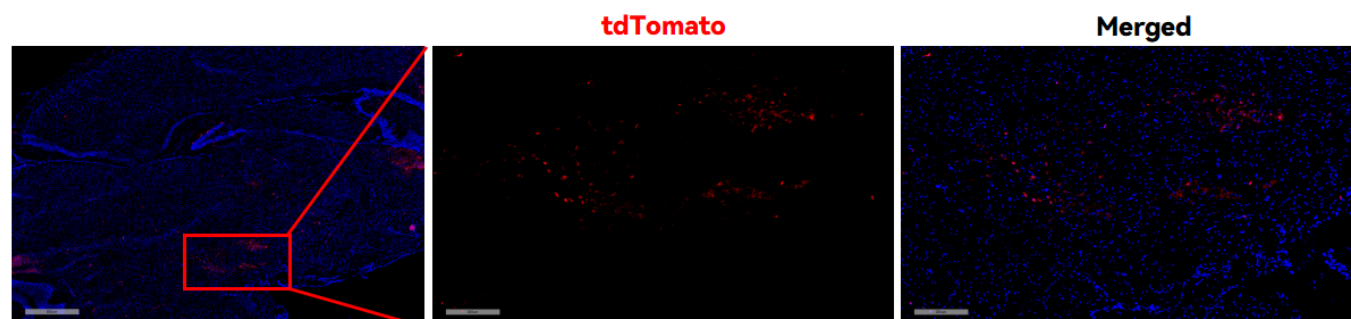


Fig1. Cre-mediated recombination in ventral tegmental area (VTA) of *Slc6a3*^{Cre/+}; *Rosa26*^{tdTomato/+} mouse.

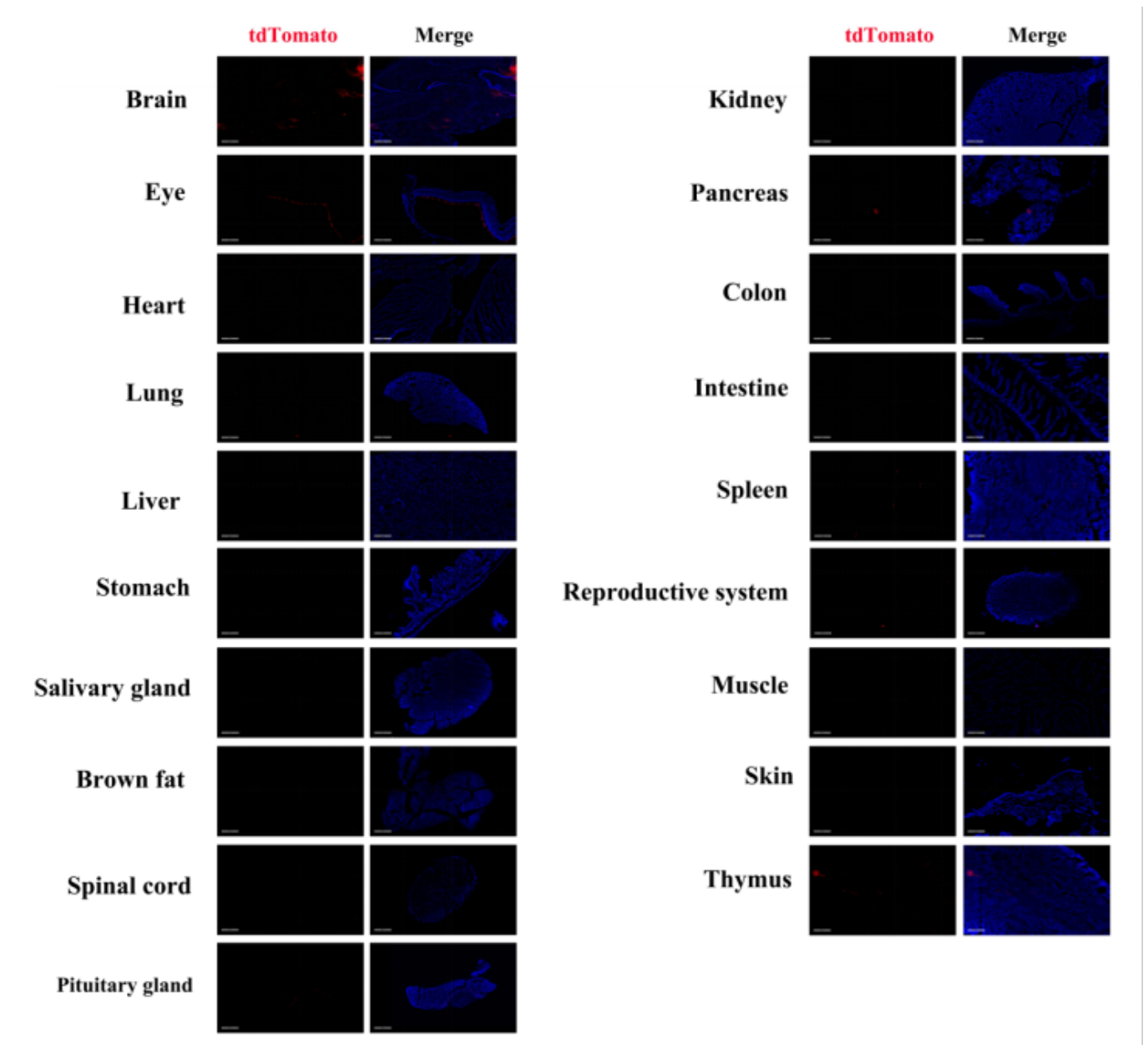


Fig2. Detection of tdTomato (red) in various tissues of *Slc6a3^{Cre/+};Rosa26^{tdTomato/+}* mice. (For more detailed information please contact our technical advisor.)