

Bmi1-IRES-CreERT2

Nomenclature	C57BL/6Smoc- <i>Bmi1</i> ^{em1(IRES-CreERT2)Smoc}
Cat. NO.	NM-KI-200095
Strain State	Sperm cryopreservation

Gene Summary

Gene Symbol Bmi1	Synonyms	Bmi-1; Pcgf4; AW546694
	NCBI ID	12151
	MGI ID	88174
	Ensembl ID	ENSMUSG00000026739
	Human Ortholog	BMI1

Model Description

A IRES-CreERT2 expression cassette was knocked into the Bmi1 gene stop codon site.

Research Application: Cre recombinase tool

*Literature published using this strain should indicate: Bmi1-IRES-CreERT2 mice (Cat. NO. NM-KI-200095) were purchased from Shanghai Model Organisms Center, Inc..

Validation Data

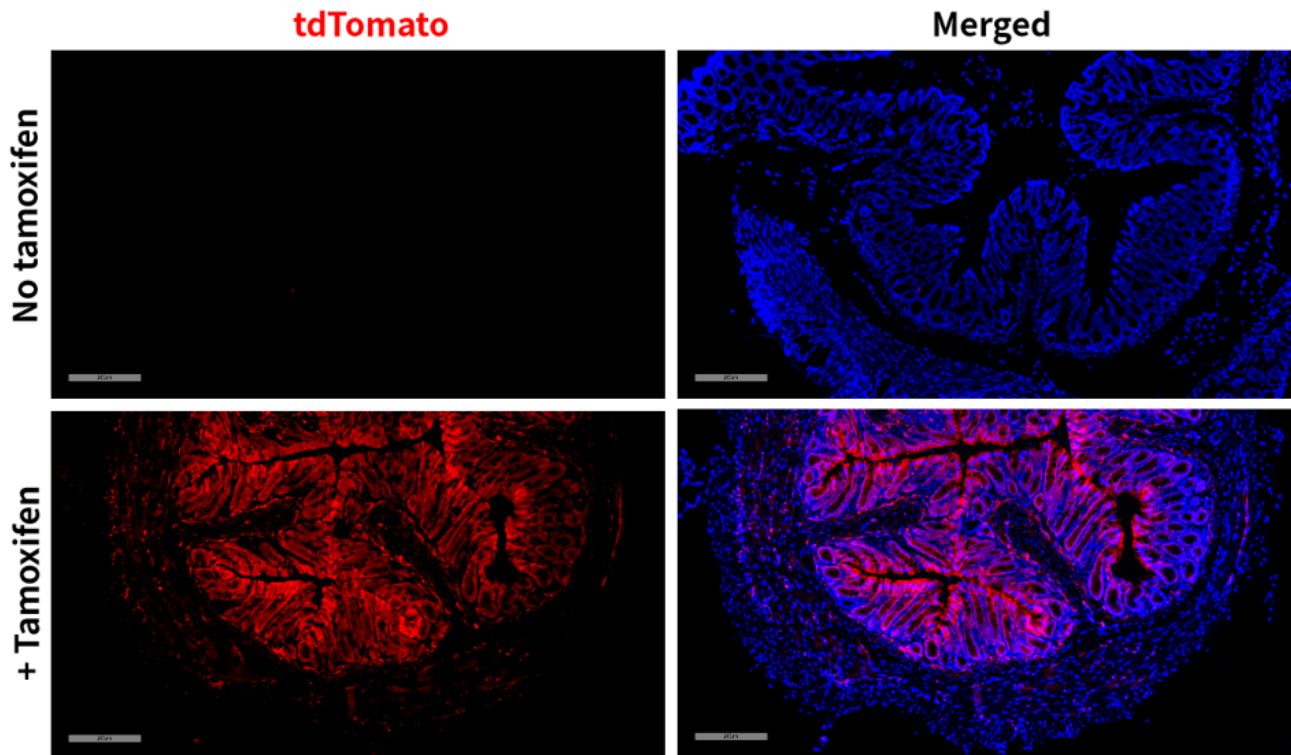


Fig 1. Cre-mediated recombination in Colon of $Bmi1^{Cre/+}; Rosa26^{tdTomato/+}$ mice .

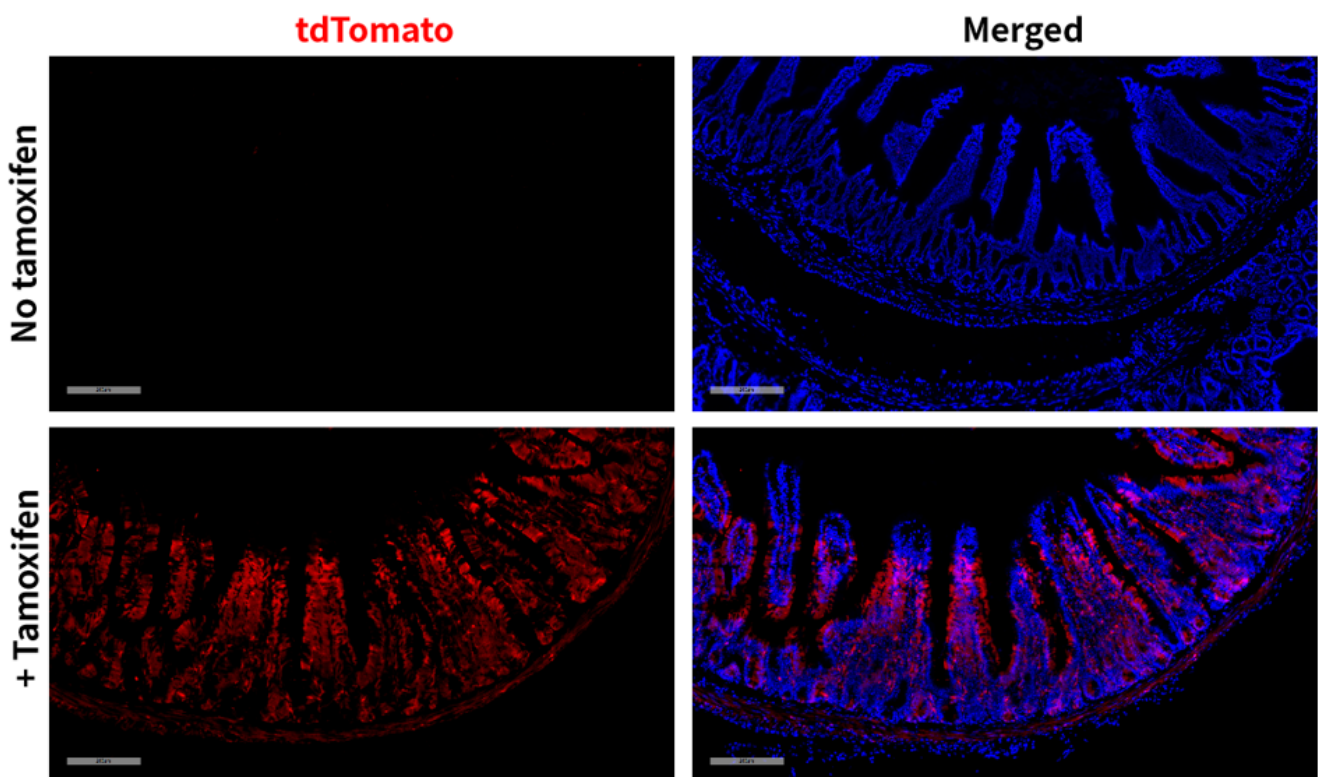


Fig 2. Cre-mediated recombination in intestine of $Bmi1^{Cre/+}; Rosa26^{tdTomato/+}$ mice .

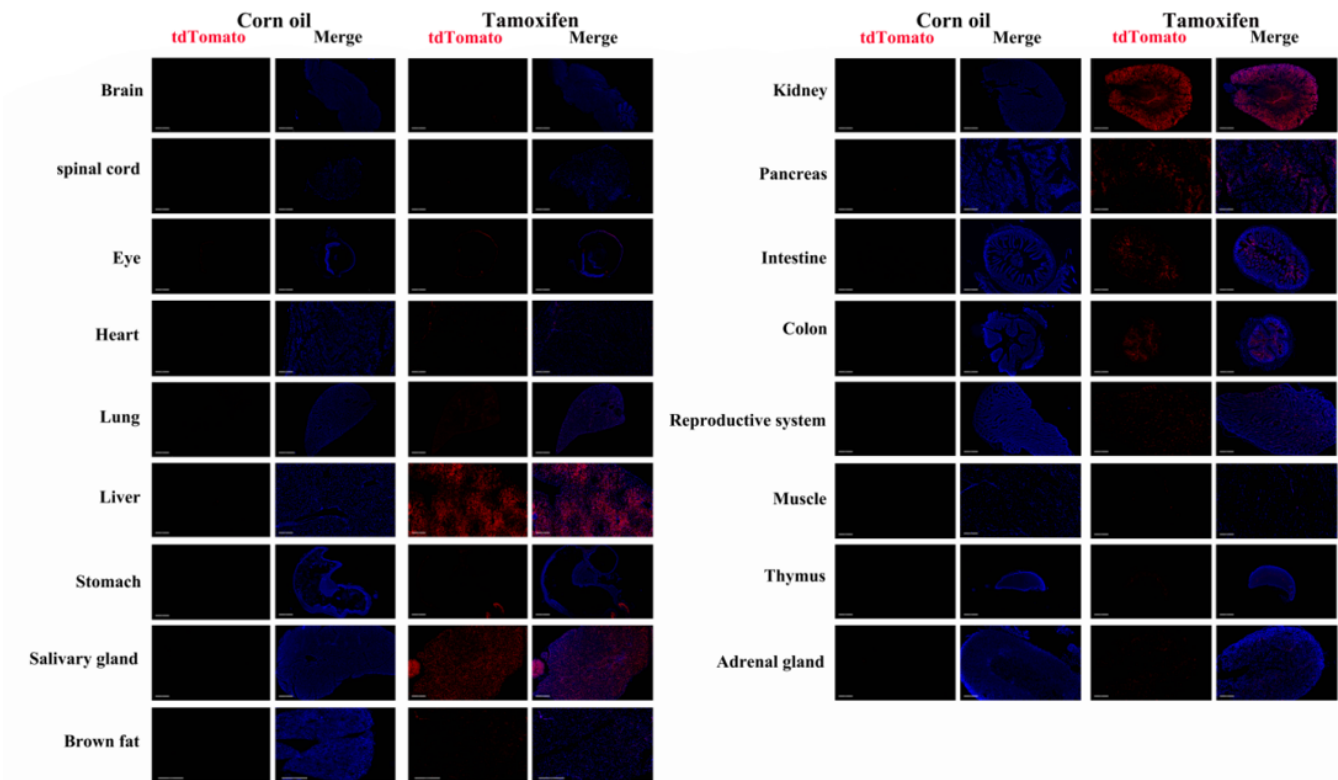


Fig 3. Detection of tdTomato(red) in various tissues of $Bmi1^{Cre/+};Rosa26^{tdTomato/+}$ mice. Expression tissues include: choroid plexus, cornea, heart, lung, liver, stomach, salivary glands, brown fat, kidney, pancreas, small and large intestine, testis, thymus, adrenal gland. A few cells expressed in brain, spinal cord, muscle. (For more detailed information please contact our technical advisor.)