

Neto1-Cre

Nomenclature	C57BL/6Smoc- <i>Neto1</i> ^{em1(iCre-pA)Smoc}
Cat. NO.	NM-KI-200112
Strain State	Embryo cryopreservation

Gene Summary

Gene Symbol Neto1	Synonyms	Btcl1; AI851453; C130005O10Rik
	NCBI ID	246317
	MGI ID	2180216
	Ensembl ID	ENSMUSG00000050321
	Human Ortholog	NETO1

Model Description

A iCre-pA expression cassette was knocked into the Neto1 gene start codon site.

Research Application: Cre recombinase tool

*Literature published using this strain should indicate: Neto1-Cre mice (Cat. NO. NM-KI-200112) were purchased from Shanghai Model Organisms Center, Inc..

Validation Data

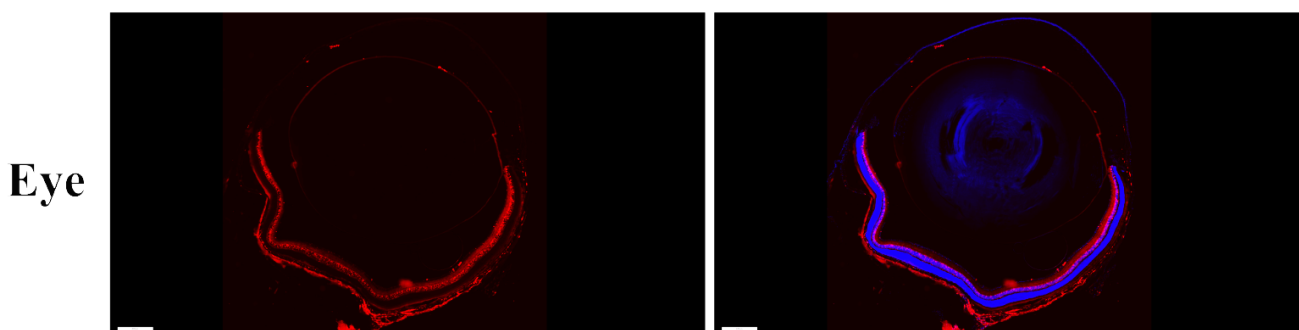


Figure 1: Cre-mediated recombination in the retina of *Neto1*^{iCre/+}; *Rosa26*^{tdTomato/+} mouse. Detection of tdTomato (red) in the retina of *Neto1*^{iCre/+}; *Rosa26*^{tdTomato/+} mouse.

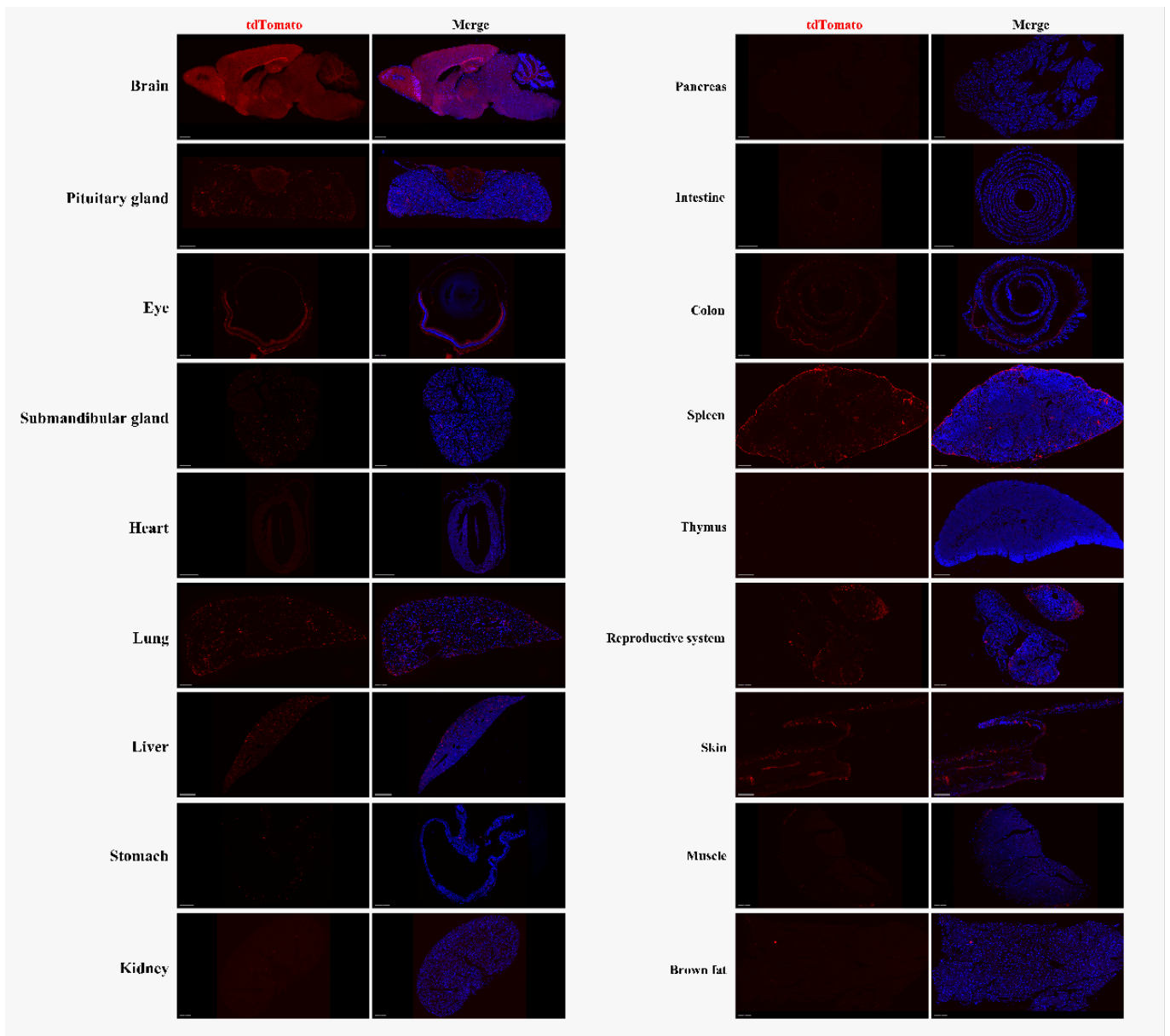


Figure 2: Detection of tdTomato (red) in various tissues of *Neto1^{iCre/+}; Rosa26^{tdTomato/+}* mice.