

Ltf-Cre-IRES-tdTomato

Nomenclature	C57BL/6Smoc- <i>Ltf</i> ^{Em1((Cre-IRES-tdTomato-WPRE-pA)Smoc)}
Cat. NO.	NM-KI-200116
Strain State	Sperm cryopreservation

Gene Summary

Gene Symbol Ltf	Synonyms	Lf; Csp82; Ms10r; MMS10R
	NCBI ID	17002
	MGI ID	96837
	Ensembl ID	ENSMUSG00000032496
	Human Ortholog	LTF

Model Description

A iCre-IRES-tdTomato-WPRE-pA expression cassette was knocked into the Ltf gene start codon site.

Research Application: Cre recombinase tool

*Literature published using this strain should indicate: Ltf-Cre-IRES-tdTomato mice (Cat. NO. NM-KI-200116) were purchased from Shanghai Model Organisms Center, Inc..

Validation Data

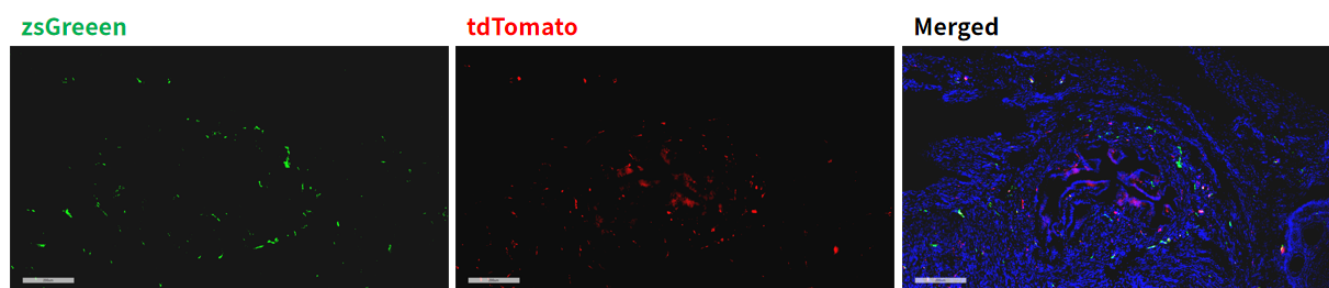


Fig 1. Cre-mediated recombination in uterus of *Ltf*^{Cre-tdTomato/+}; *Rosa26*^{zsGreen/+} mice.

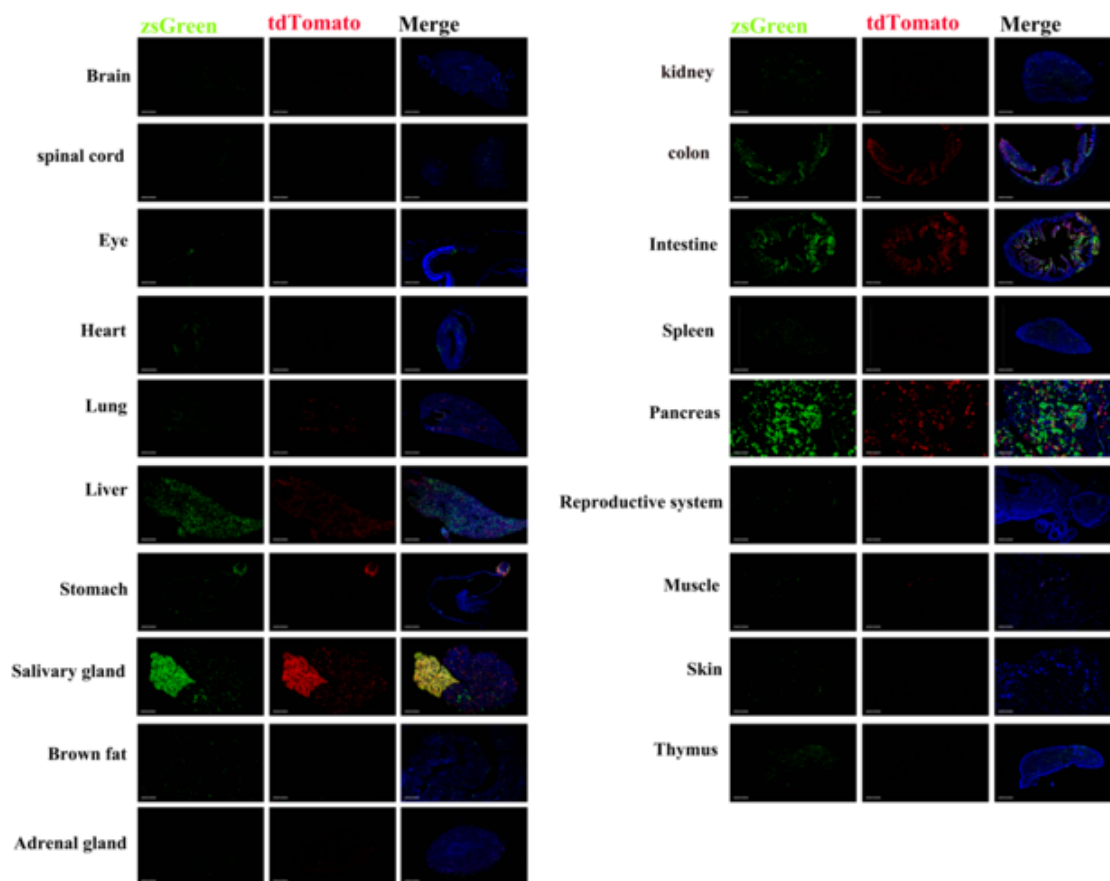


Fig 2. Detection of tdTomato (red) and zsGreen (Green) in various tissues of $Ltf^{Cre-tdTomato/+}; Rosa26^{zsGreen/+}$ mice. Expression tissues include: brain, spinal cord, heart, lungs, liver, stomach, salivary glands, brown fat, adrenal glands, kidneys, colon, small intestine, spleen, pancreas, uterus and ovaries, thymus. A few cells expressed in retina, muscle, skin. (9-week old, female) (For more detailed information please contact our technical advisor.)