

Notch1-CreERT2

Nomenclature	C57BL/6Smoc- <i>Notch1</i> ^{em1(CreERT2-2xpA)Smoc}
Cat. NO.	NM-KI-200122
Strain State	Embryo cryopreservation

Gene Summary

Gene Symbol Notch1	Synonyms	N1; Mis6; Tan1; lin-12; 9930111A19Rik
	NCBI ID	18128
	MGI ID	97363
	Ensembl ID	ENSMUSG00000026923
	Human Ortholog	NOTCH1

Model Description

A CreERT2-2xpA expression cassette was knocked into the Notch1 gene start codon site. Notch1 performs vital cell functions, such as proliferation, differentiation, apoptosis, and stem cell maintenance. When Notch1-CreERT2 mice are bred with mice containing loxP-flanked sequence, tamoxifen-inducible, Cre-mediated recombination will result in deletion of the floxed sequences in NOTCH1 positive cells.

Research Application: Cre recombinase tool;

*Literature published using this strain should indicate: Notch1-CreERT2 mice (Cat. NO. NM-KI-200122) were purchased from Shanghai Model Organisms Center, Inc..

Validation Data

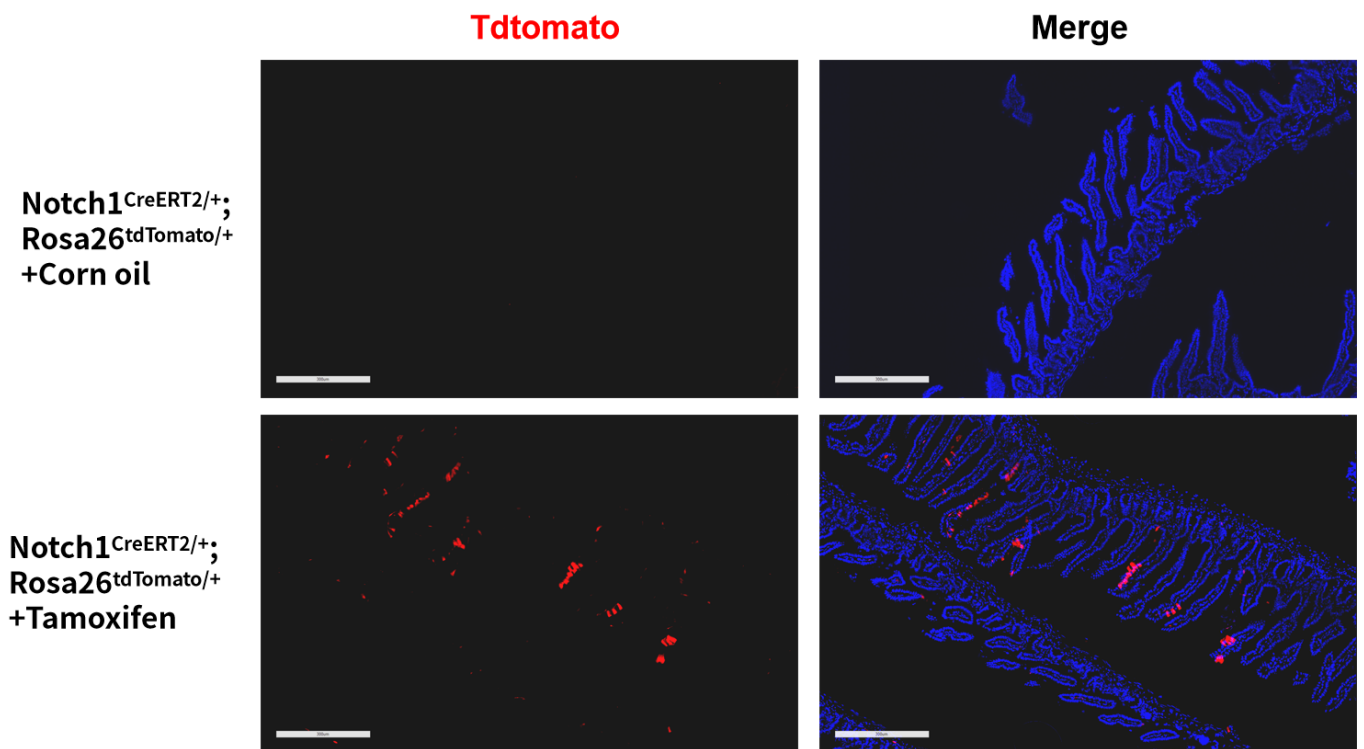


Fig. 1 CreERT2-mediated recombination in individual cells of small intestinal derived from Notch1-CreERT2; Rosa26-tdTomato mice after tamoxifen treatment.

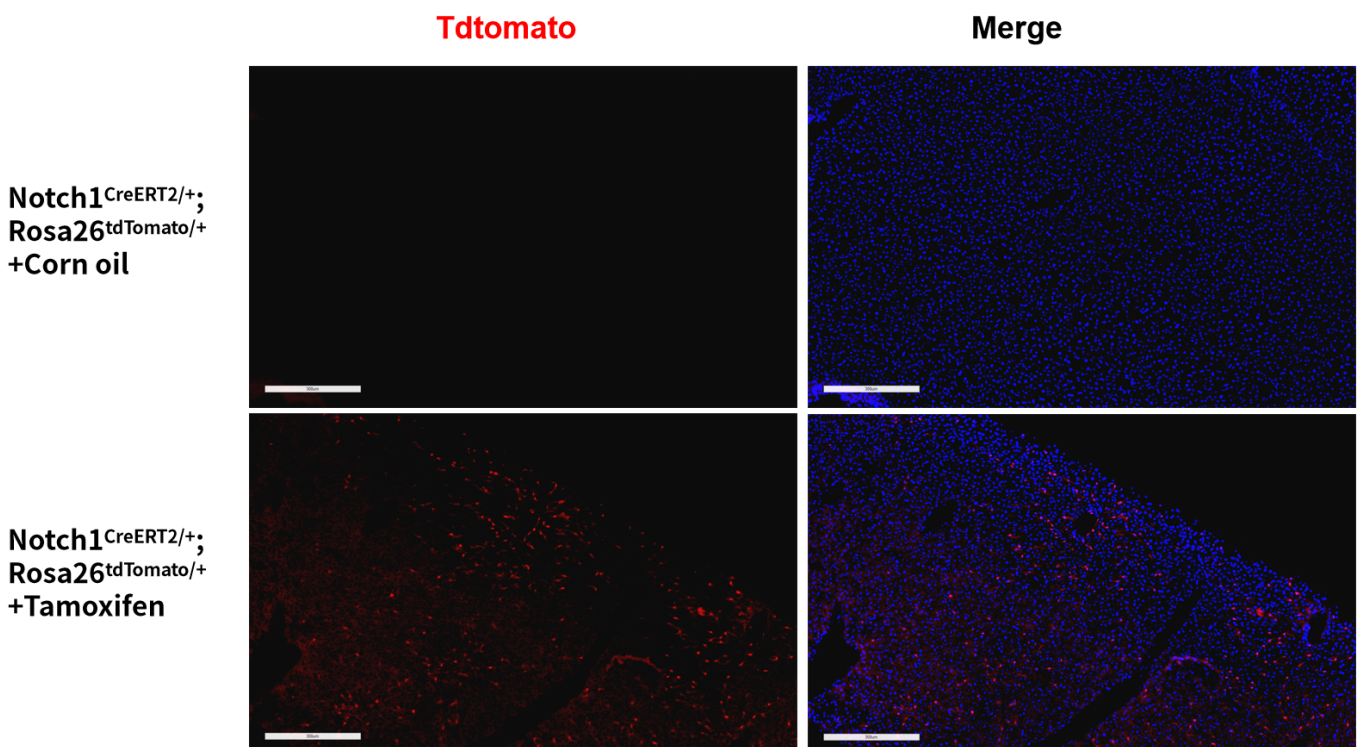


Fig. 2 CreERT2-mediated recombination in individual cells of liver derived from Notch1-CreERT2; Rosa26-tdTomato mice after tamoxifen treatment.

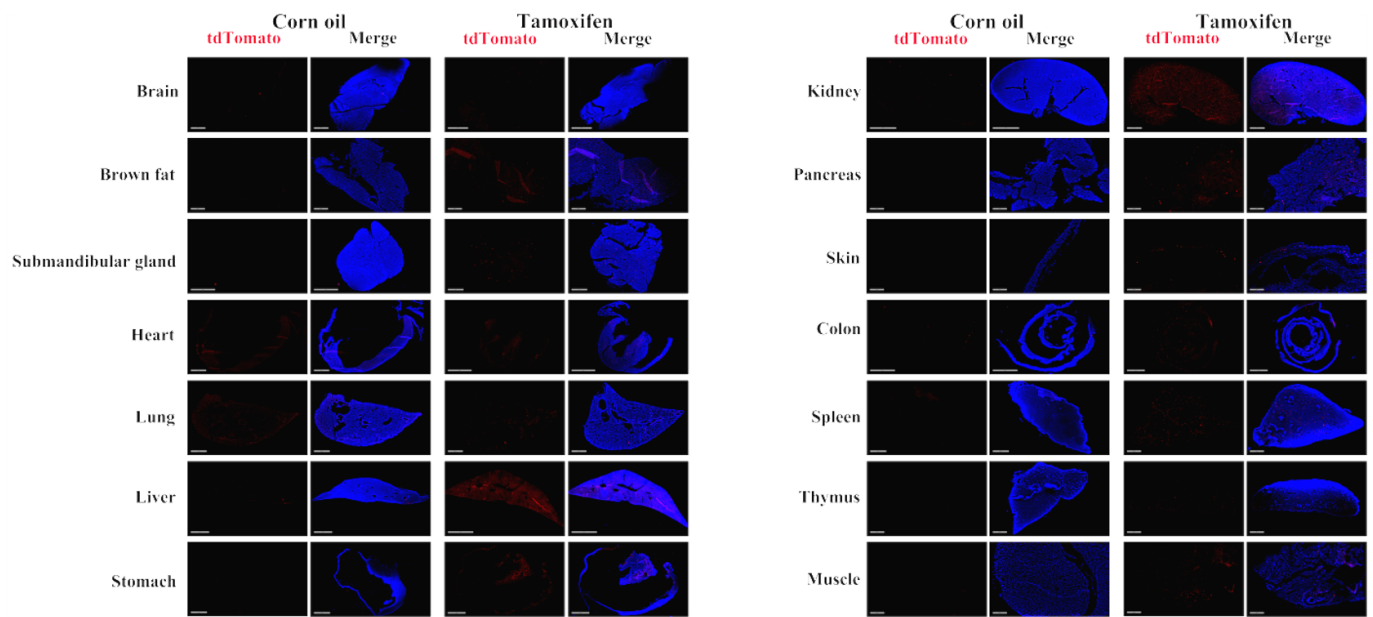


Fig. 3 Labeling was also observed in individual cells of the brain, heart, brown fat, salivary gland, lung, liver, stomach, kidney, pancreas, epidermis, colon, spleen, thymus and muscle.(For more information please contact: 400-728-0660.)