

# Scgb1a1-IRES-CreERT2

<b>Nomenclature</b>	C57BL/6Smoc- <i>Scgb1a1</i> <sup>em1(IRES-CreERT2)Smoc</sup>
<b>Cat. NO.</b>	NM-KI-200129
<b>Strain State</b>	Repository Live

## Gene Summary

<b>Gene Symbol</b> Scgb1a1	<b>Synonyms</b>	UG; UGB; Utg; CC10; CC16; CCSP; PCB-BP
	<b>NCBI ID</b>	<a href="#">22287</a>
	<b>MGI ID</b>	<a href="#">98919</a>
	<b>Ensembl ID</b>	<a href="#">ENSMUSG00000024653</a>
	<b>Human Ortholog</b>	SCGB1A1

## Model Description

A IRES-CreERT2 expression cassette was knocked into the Scgb1a1 gene stop codon site.

**Research Application:** These mice express creERT2 recombinase from the Scgb1a1 locus (secretoglobin). This strain may useful for in the research of bronchiolar non-ciliated Clara cells. \*Literature published using this strain should indicate: Scgb1a1-IRES-CreERT2 mice (Cat. NO. NM-KI-200129) were purchased from Shanghai Model Organisms Center, Inc..

## Validation Data

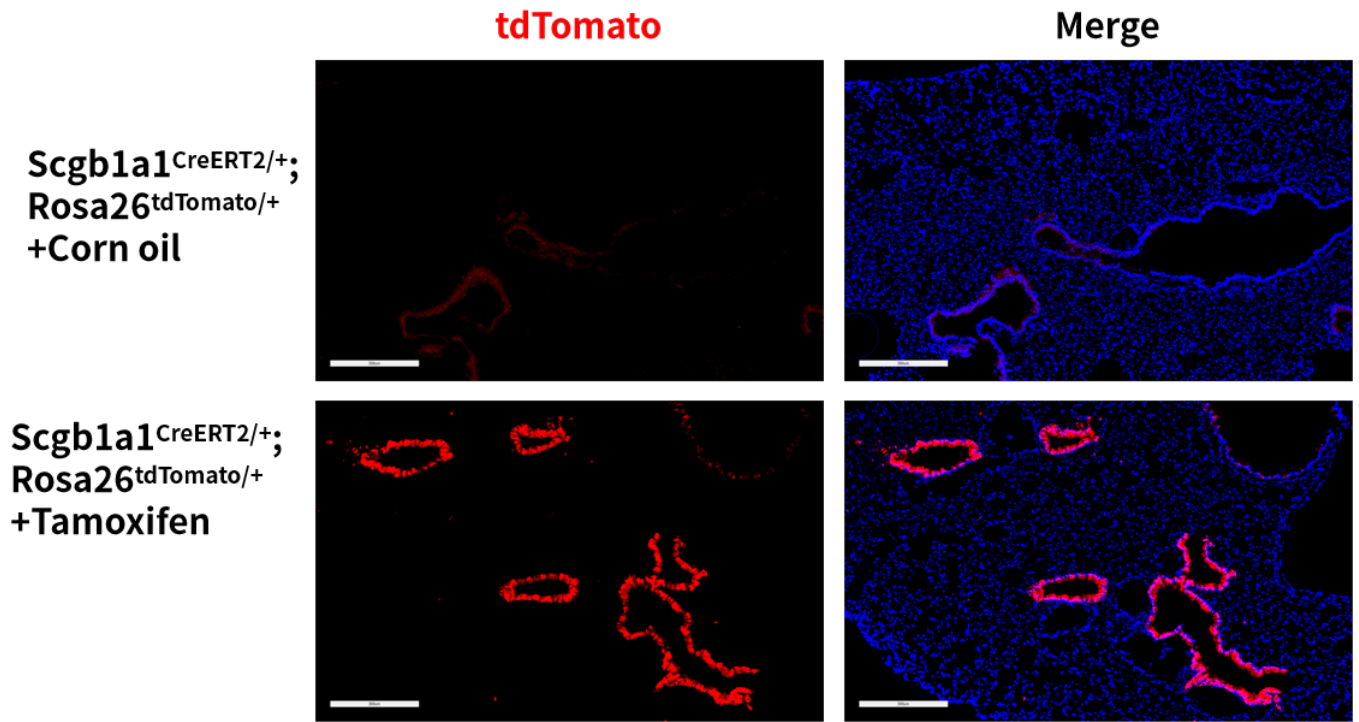


Fig.1 CreERT2-mediated recombination in the lung of Scgb1a1CreERT2/+; Rosa26tdTomato/+ mouse. TdTomato(red) expression can be detected in the bronchial and alveolar cells of Scgb1a1CreERT2/+; Rosa26tdTomato/+ mouse after tamoxifen treatment.

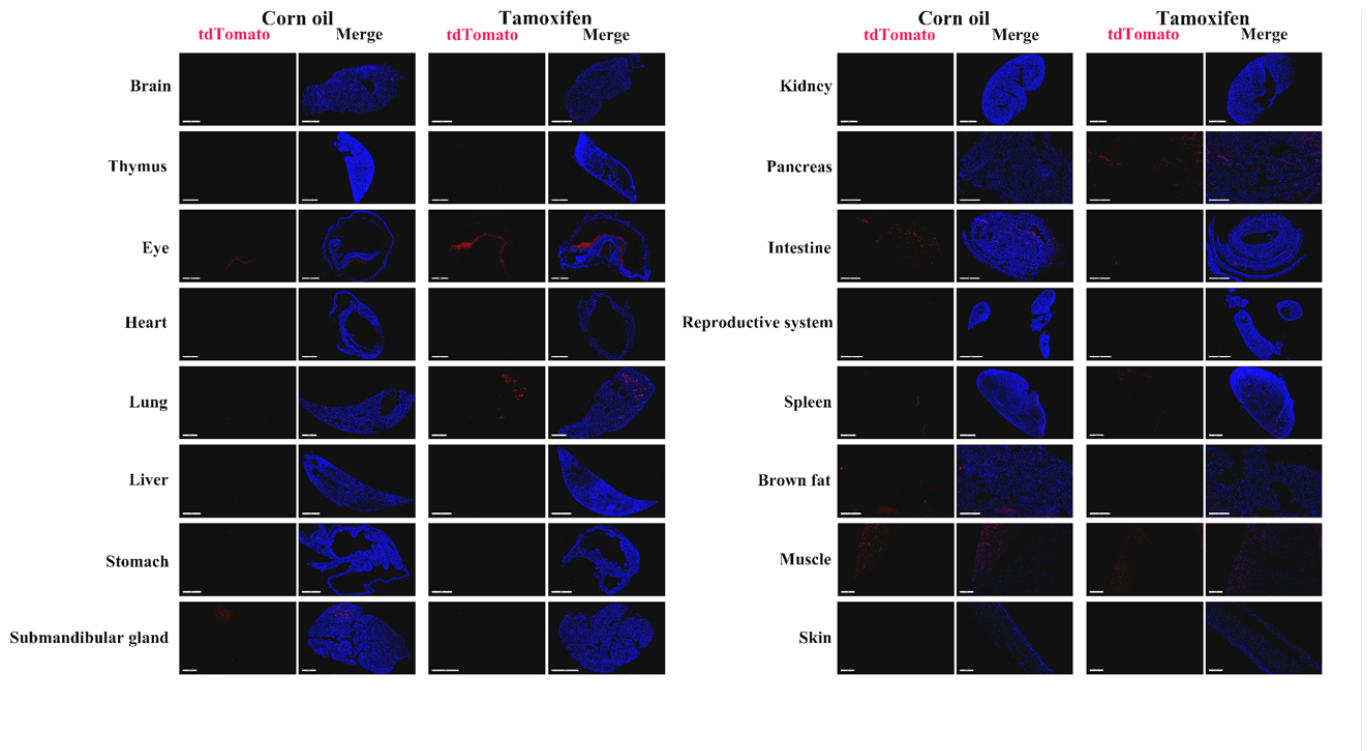


Fig. 2 Detection of tdTomato(red) in various tissues of Scgb1a1CreERT2/+; Rosa26tdTomato/+ mice. CreERT2 mediated recombination can be detected in the bronchial and alveolar cells after tamoxifen treatment. TdTomato expression can not be observed in the brain, pituitary gland, heart, liver, spleen, kidney, thymus, stomach, intestine, colon, submandibular gland, ovary, uterus, skin, muscle and brown fat. (For more detailed information please contact our technical

advisor.)

---