

Cck-IRES-Cre

Nomenclature	C57BL/6Smoc- <i>Cck</i> ^{em1(IRES-iCre-PolyA)Smoc}
Cat. NO.	NM-KI-200131
Strain State	Sperm cryopreservation

Gene Summary

Gene Symbol Cck	Synonyms	-
	NCBI ID	12424
	MGI ID	88297
	Ensembl ID	ENSMUSG00000032532
	Human Ortholog	CCK

Model Description

A IRES-iCre-PolyA expression cassette was knocked into the Cck gene stop codon site.

Research Application: Cre recombinase tool

*Literature published using this strain should indicate: Cck-IRES-Cre mice (Cat. NO. NM-KI-200131) were purchased from Shanghai Model Organisms Center, Inc..

Validation Data

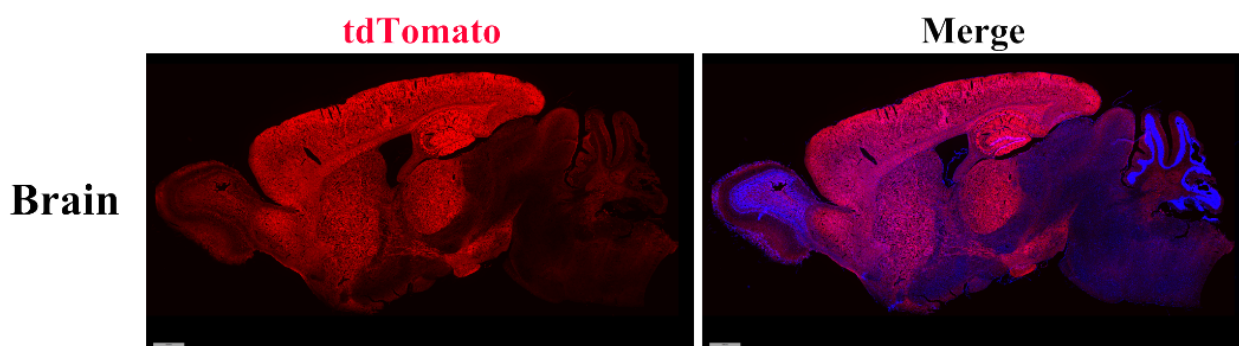


Figure 1: Cre-mediated recombination in the brain of *Cck*^{Cre/+}; *Rosa26*^{tdTomato/+} mouse. Detection of tdTomato (red) in the brain of *Cck*^{Cre/+}; *Rosa26*^{tdTomato/+} mouse.

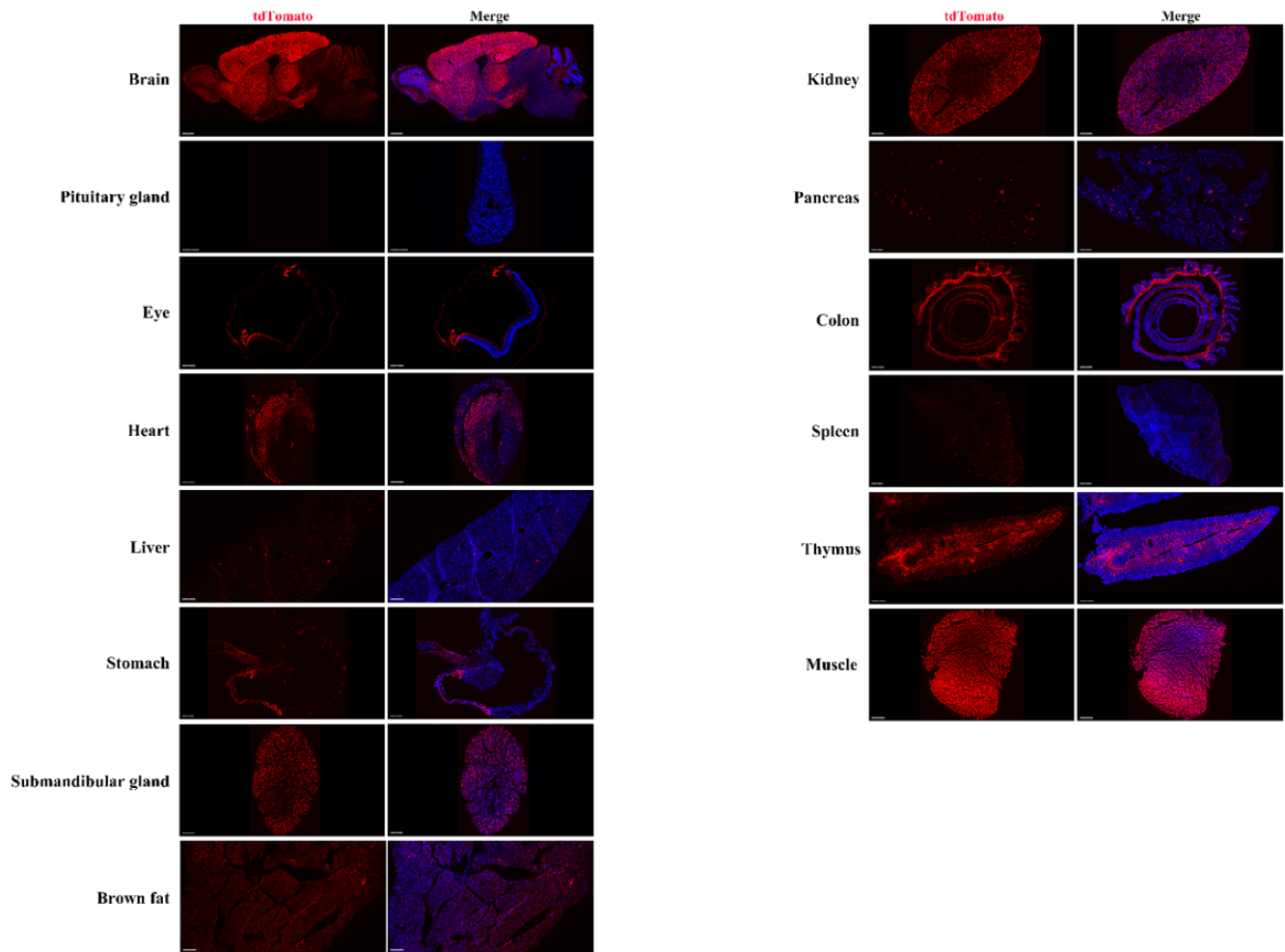


Figure 2: Detection of tdTomato (red) in various tissues of *CckiCre/+; Rosa26tdTomato/+* mice.