

Emx1-IRES-Cre

Nomenclature	C57BL/6Smoc- <i>emx1</i> ^{em1(IRES-Cre)Smoc}
Cat. NO.	NM-KI-200149
Strain State	Sperm cryopreservation

Gene Summary

Gene Symbol Emx1	Synonyms	-
	NCBI ID	13796
	MGI ID	95387
	Ensembl ID	ENSMUSG00000033726
	Human Ortholog	EMX1

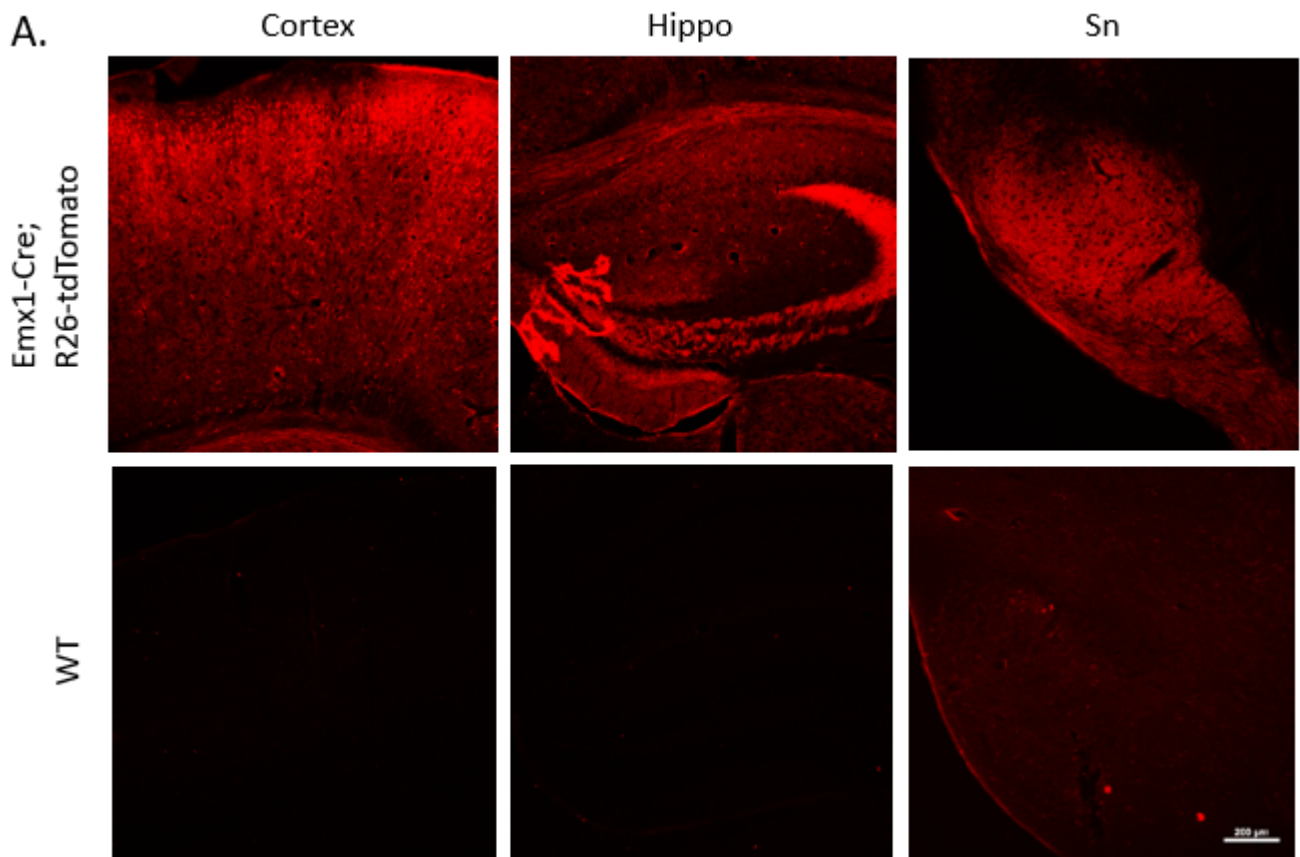
Model Description

A IRES-Cre expression cassette was knocked into the Emx1 gene stop codon site.

Research Application: Cre recombinase tool

*Literature published using this strain should indicate: Emx1-IRES-Cre mice (Cat. NO. NM-KI-200149) were purchased from Shanghai Model Organisms Center, Inc..

Validation Data



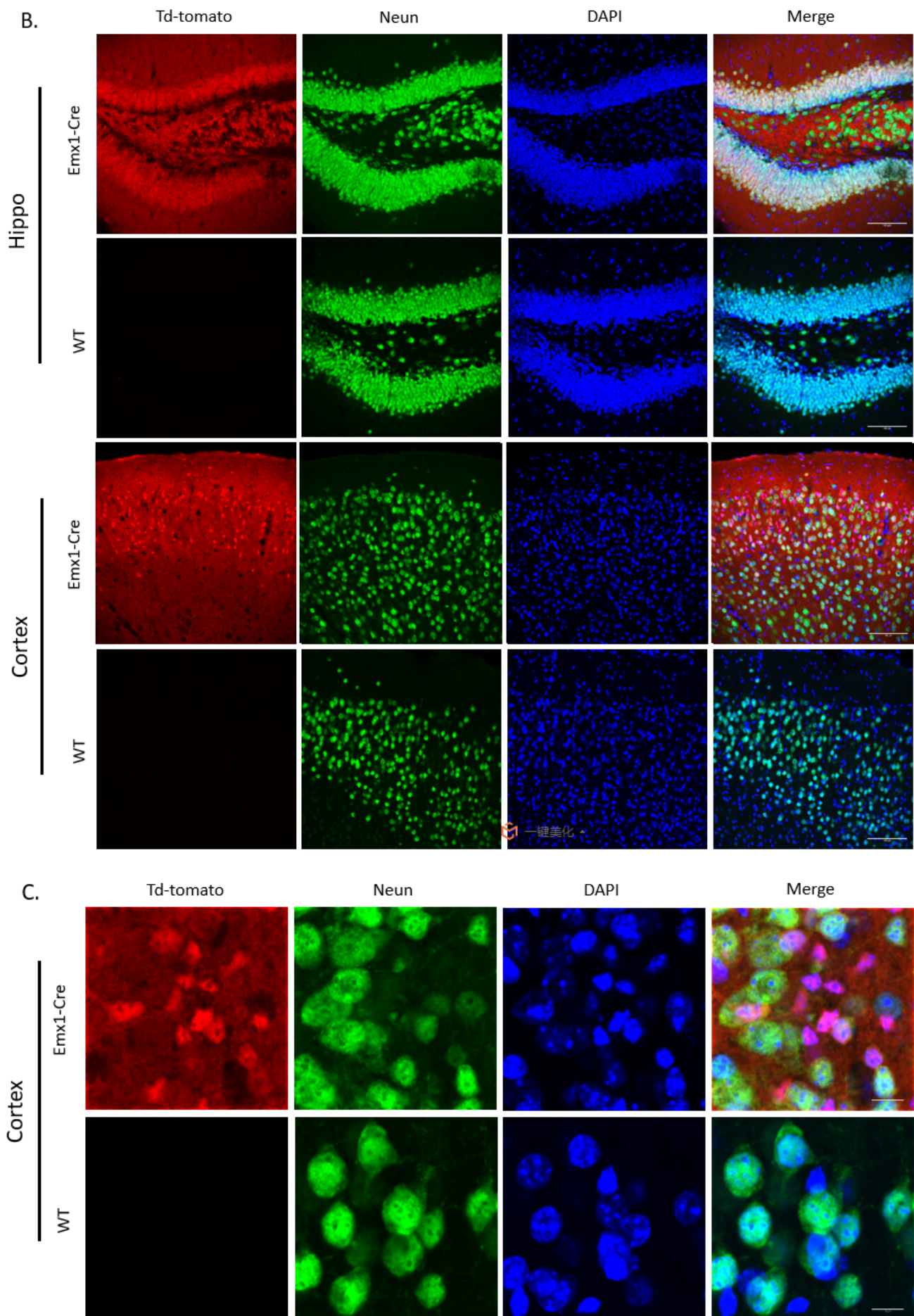


Fig1. Expression pattern of tomato in Emx1-Cre; R26-tdTomato mice.

A. Scale bar=200 μ m B. Scale bar=100 μ m C. Scale bar=10 μ m

Hippo: Hippocampus; Sn: Substantia nigra.
