

Pax8-Cre

Nomenclature	C57BL/6Smoc- <i>Pax8</i> ^{em1(Cre-WPRE-polyA)Smoc}
Cat. NO.	NM-KI-200151
Strain State	Repository Live

Gene Summary

Gene Symbol Pax8	Synonyms	Pax-8
	NCBI ID	18510
	MGI ID	97492
	Ensembl ID	ENSMUSG00000026976
	Human Ortholog	PAX8

Model Description

A Cre-WPRE-polyA expression cassette was knocked into the Pax8 gene start codon site.

Research Application: Cre recombinase tool

*Literature published using this strain should indicate: Pax8-Cre mice (Cat. NO. NM-KI-200151) were purchased from Shanghai Model Organisms Center, Inc..

Validation Data

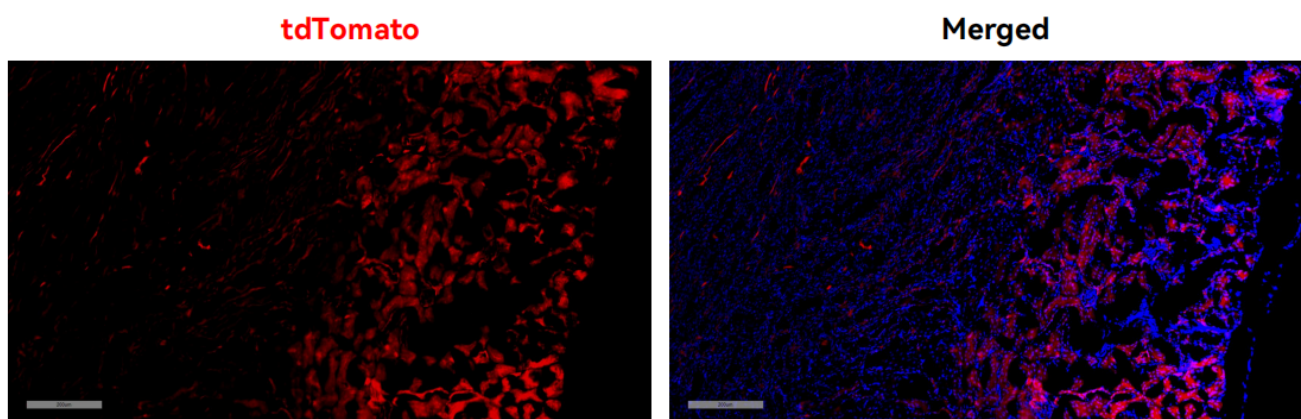


Fig1. Cre-mediated recombination in kidney of Pax8^{Cre/+}; Rosa26^{tdTomato/+} mouse.

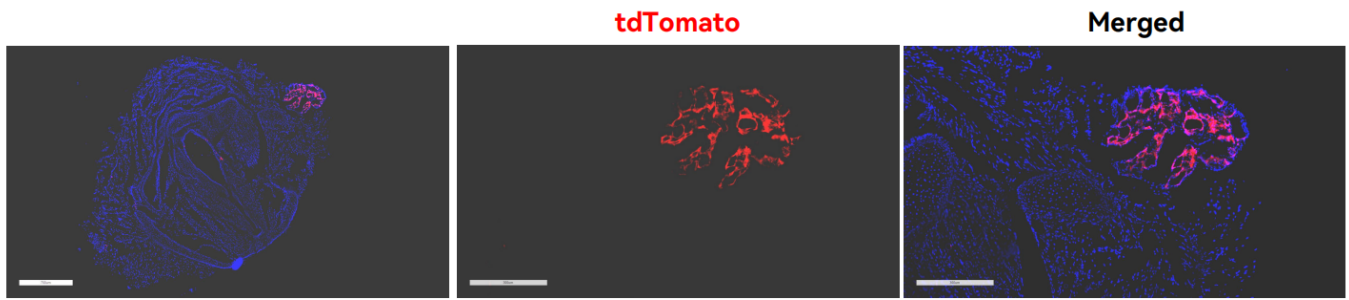


Fig2. Cre-mediated recombination in thyroid of Pax8^{Cre/+}; Rosa26tdTomato^{+/+} mouse.

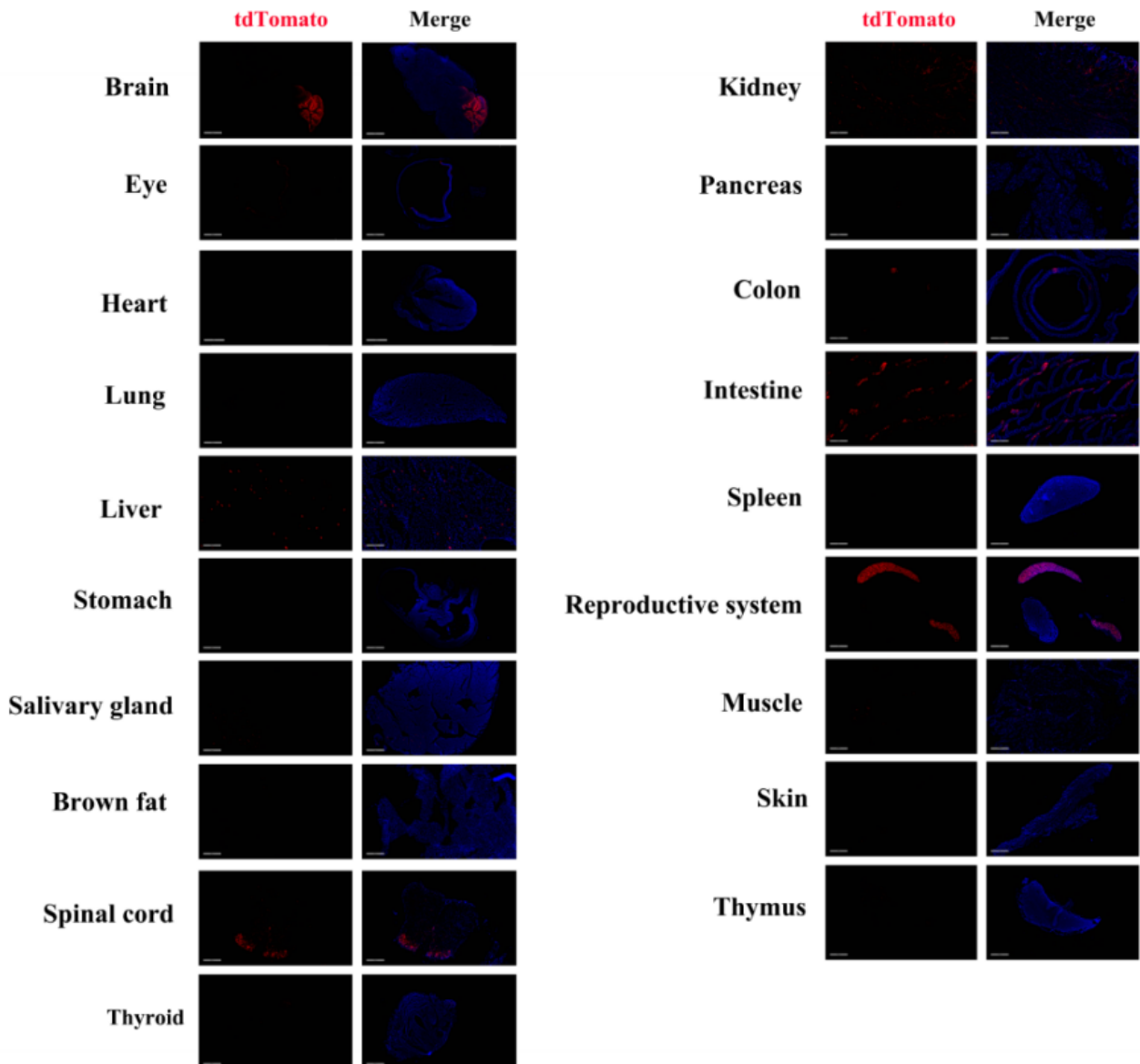


Fig3. Detection of tdTomato (red) in various tissues of Pax8^{Cre/+}; Rosa26tdTomato^{+/+} mice. (For more detailed information please contact our technical advisor.)