

# Cx3cr1-CreERT2

<b>Nomenclature</b>	C57BL/6Smoc- <i>Cx3cr1</i> <sup>em1(creERT2-WPRE-polyA)Smoc</sup>
<b>Cat. NO.</b>	NM-KI-200157
<b>Strain State</b>	Repository Live

## Gene Summary

<b>Gene Symbol</b> Cx3cr1	<b>Synonyms</b>	-
	<b>NCBI ID</b>	<a href="#">13051</a>
	<b>MGI ID</b>	<a href="#">1333815</a>
	<b>Ensembl ID</b>	<a href="#">ENSMUSG00000052336</a>
	<b>Human Ortholog</b>	CX3CR1

## Model Description

A creERT2-WPRE-polyA expression cassette was knocked into the Cx3cr1 gene start codon site.

**Research Application:** Cre recombinase tool

\*Literature published using this strain should indicate: Cx3cr1-CreERT2 mice (Cat. NO. NM-KI-200157) were purchased from Shanghai Model Organisms Center, Inc..

## Validation Data

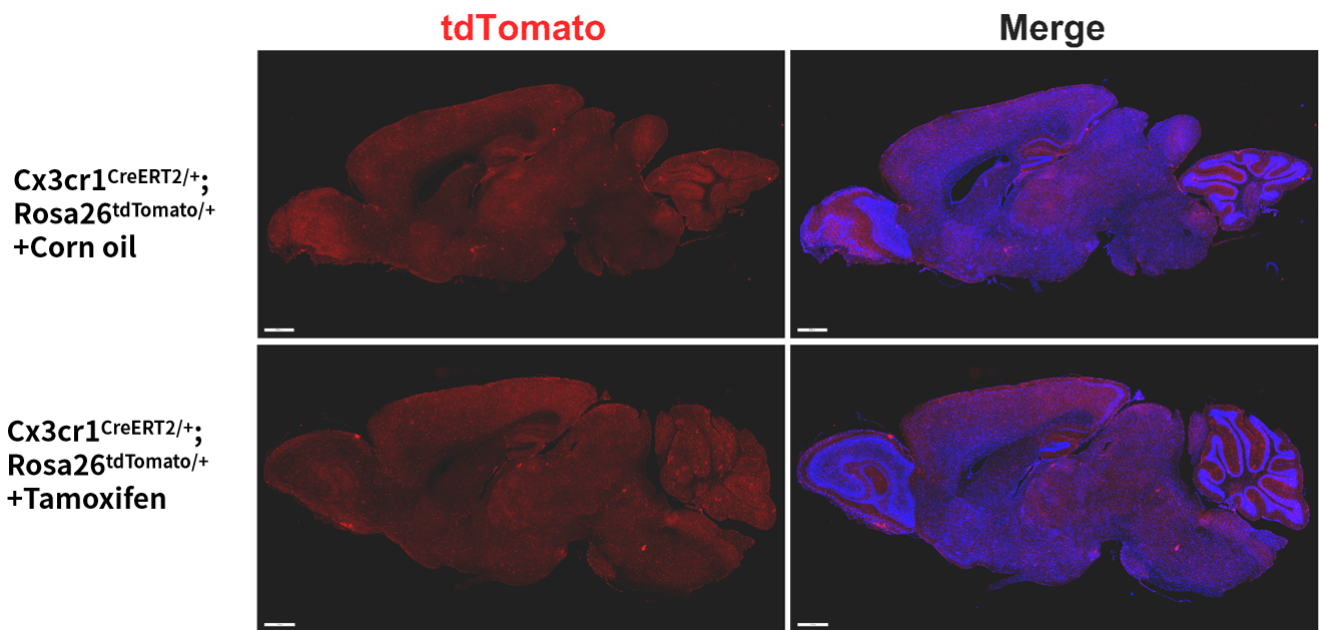


Fig. 1 CreERT2-mediated recombination in the brain of Cx3cr1<sup>CreERT2/+</sup>; Rosa26<sup>tdTomato/+</sup> mouse.

Detection of tdTomato (red) in the brain of Cx3cr1<sup>CreERT2/+</sup>; Rosa26<sup>tdTomato/+</sup> mouse after tamoxifen treatment. There is a significant leakage of cre expression in the brain in the absence of tamoxifen.