

Il22-Cre

Nomenclature	C57BL/6Smoc- <i>Il22</i> ^{em1(Linker-iCre-PolyA(SV40)Smoc}
Cat. NO.	NM-KI-200167
Strain State	Repository Live

Gene Summary

Gene Symbol Il22	Synonyms	IL-22; Iltif; IL-22a; ILTIFa
	NCBI ID	50929
	MGI ID	1355307
	Ensembl ID	ENSMUSG00000074695
	Human Ortholog	IL22

Model Description

A Linker-iCre-PolyA expression cassette was knocked into the Il22 gene start codon site.

Research Application: The cytokine interleukin-22 (IL-22) plays an important role in tissue regeneration and maintenance of skin and mucosal barriers.

*Literature published using this strain should indicate: Il22-Cre mice (Cat. NO. NM-KI-200167) were purchased from Shanghai Model Organisms Center, Inc..

Validation Data

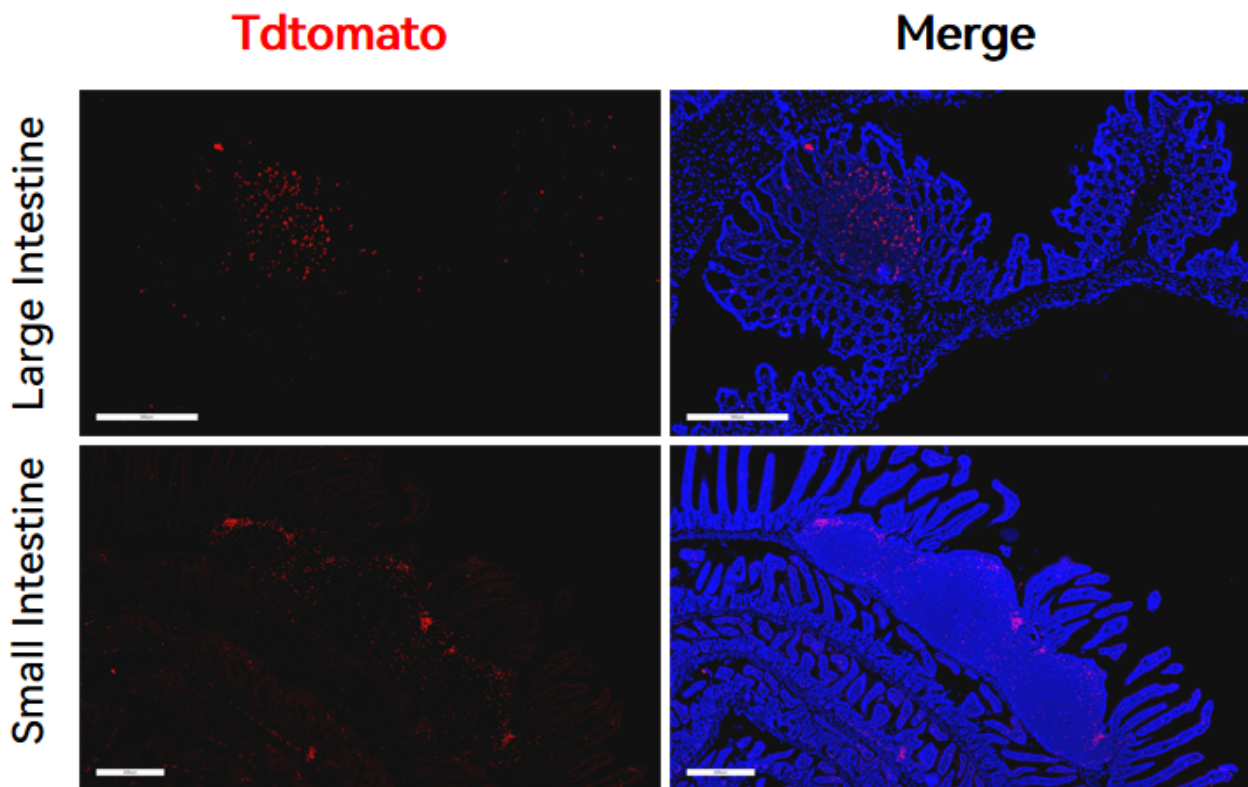


Fig. 1 CreERT2-mediated recombination in the intestine of $IL22^{Cre/+}; Rosa26^{tdTomato/+}$ mouse. TdTomato(red) expression can be detected in the lymph nodes of $IL22^{Cre/+}; Rosa26^{tdTomato/+}$ mouse.

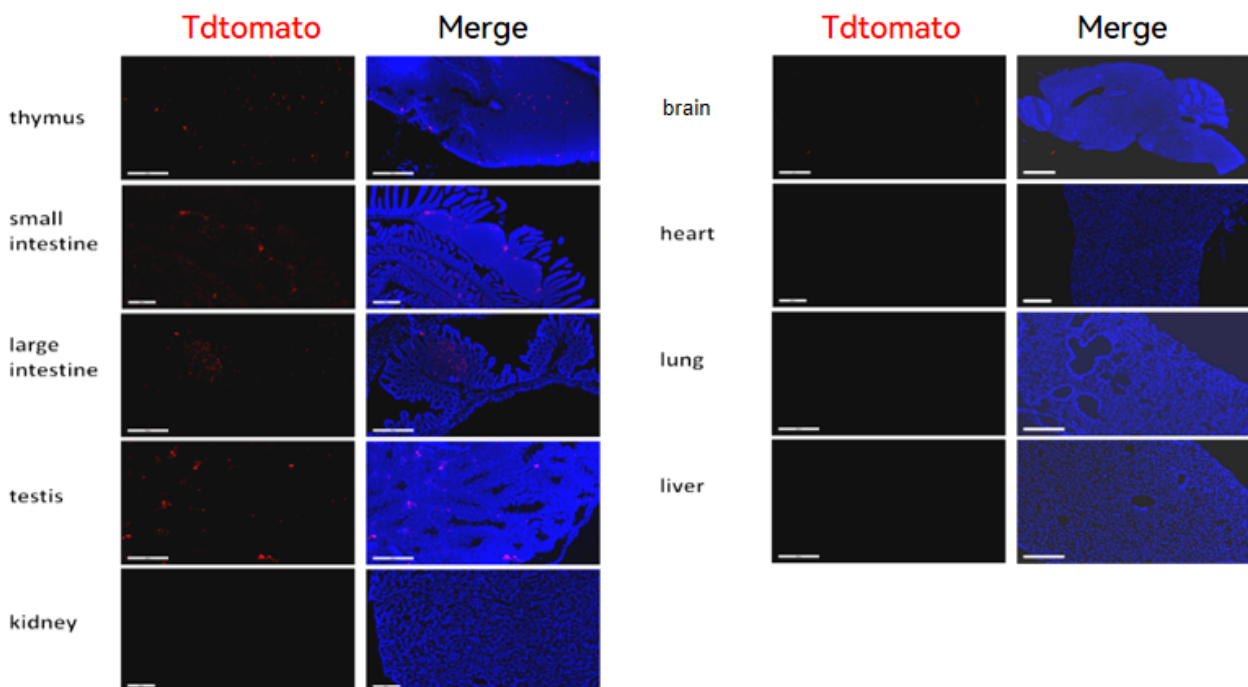


Fig. 2 Detection of tdTomato(red) in various tissues of $IL22^{Cre/+}; Rosa26^{tdTomato/+}$ mice. Tdtomato was expressed in the lymph nodes of thymus, intestine and individual cells of testicular interstitium and cerebral cortex. TdTomato can not be detected in the kidney, heart, lung and liver. (For more detailed information please contact our technical advisor.)

