

# Gp1ba-2A-Cre

<b>Nomenclature</b>	C57BL/6Smoc- <i>Gp1ba</i> <sup>em1(T2A-iCre)Smoc</sup>
<b>Cat. NO.</b>	NM-KI-200172
<b>Strain State</b>	Sperm cryopreservation

## Gene Summary

<b>Gene Symbol</b> <b>Gp1ba</b>	<b>Synonyms</b>	GPIba; GPIbalph
	<b>NCBI ID</b>	<a href="#">14723</a>
	<b>MGI ID</b>	<a href="#">1333744</a>
	<b>Ensembl ID</b>	<a href="#">ENSMUSG00000050675</a>
	<b>Human Ortholog</b>	GP1BA

## Model Description

A T2A-iCre expression cassette was knocked into the Gp1ba gene stop codon site.

**Research Application:** Cre recombinase tool

\*Literature published using this strain should indicate: Gp1ba-2A-Cre mice (Cat. NO. NM-KI-200172) were purchased from Shanghai Model Organisms Center, Inc..

## Validation Data

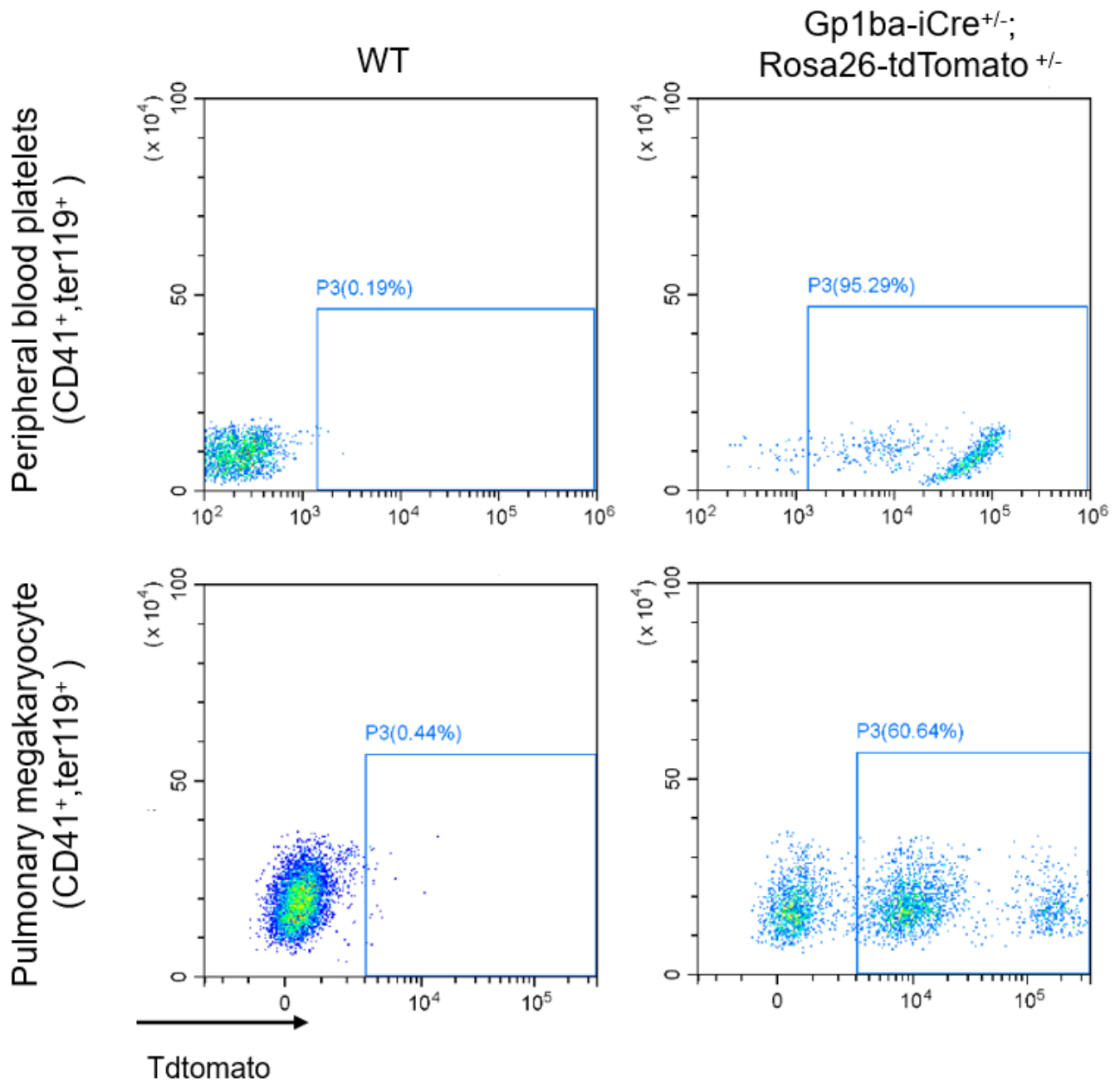


Fig1. Expression of tdTomato in the peripheral blood platelets and pulmonary megakaryocyte of Gp1ba-iCre<sup>+/-</sup>;Rosa26-tdTomato<sup>+/-</sup> mice.