

# Pbsn-2A-CreERT2

<b>Nomenclature</b>	C57BL/6Smoc- <i>Pbsn</i> <sup>em1(V5-2A-CreERT2-WPRE-polyA)Smoc</sup>
<b>Cat. NO.</b>	NM-KI-200190
<b>Strain State</b>	Sperm cryopreservation

## Gene Summary

<b>Gene Symbol</b> <b>Pbsn</b>	<b>Synonyms</b>	PB; Prbs
	<b>NCBI ID</b>	<a href="#">54192</a>
	<b>MGI ID</b>	<a href="#">1860484</a>
	<b>Ensembl ID</b>	<a href="#">ENSMUSG00000000003</a>
	<b>Human Ortholog</b>	PBSN

## Model Description

A V5-2A-CreERT2-WPRE-polyA expression cassette was knocked into the Pbsn gene stop codon site.

**Research Application:** Cre recombinase tool, epithelial cells of the prostate.

\*Literature published using this strain should indicate: Pbsn-2A-CreERT2 mice (Cat. NO. NM-KI-200190) were purchased from Shanghai Model Organisms Center, Inc..

## Validation Data

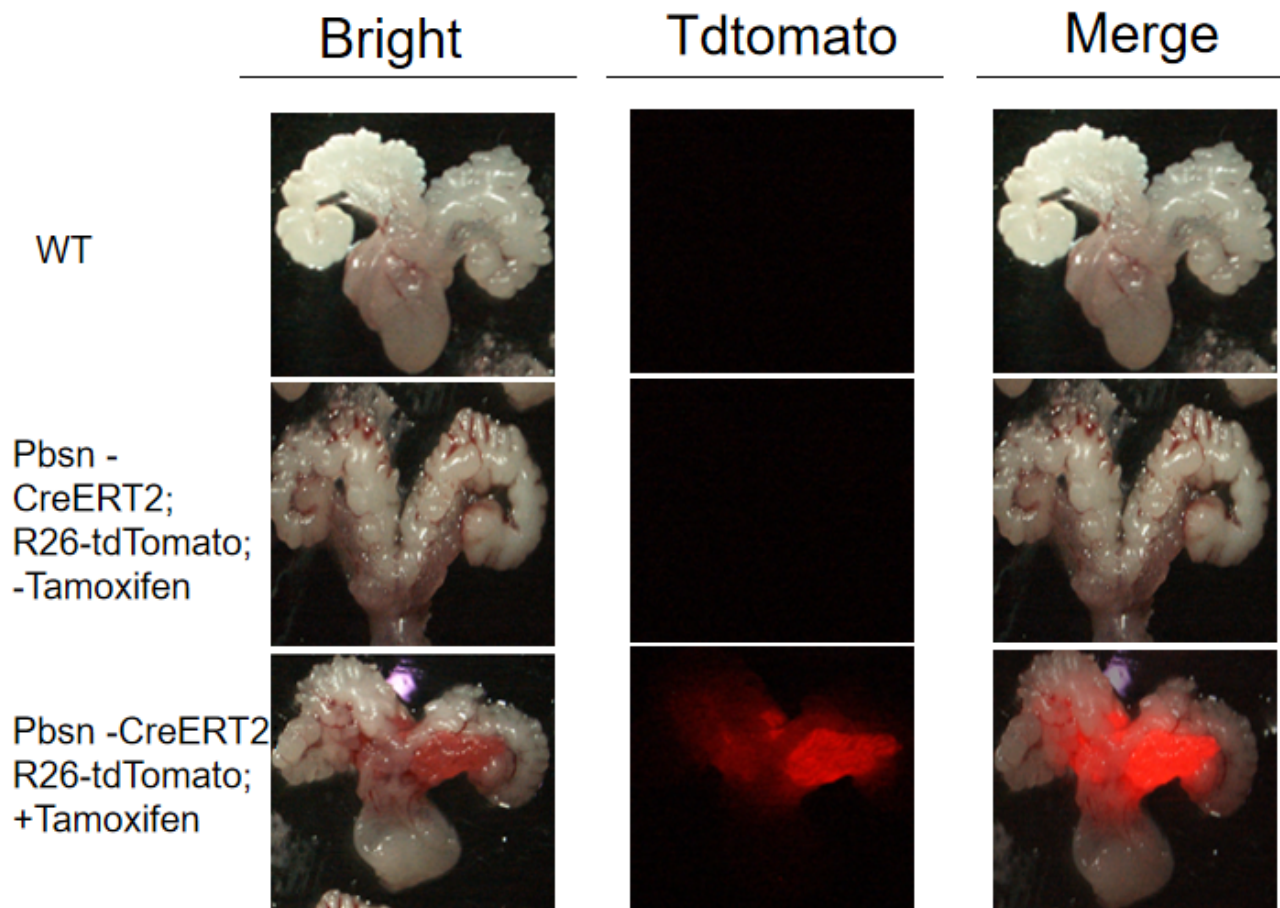


Fig1. Expression Pattern of Tomato in PbsnCreERT2/+;Rosa26tdTomato/+ mice.

CreERT2-mediated recombination in prostate epithelial cells of Pbsn<sup>CreERT2/+</sup>; Rosa26<sup>tdTomato/+</sup> mice. This strain represents an effective tool for generating prostate specific-targeted mutants.

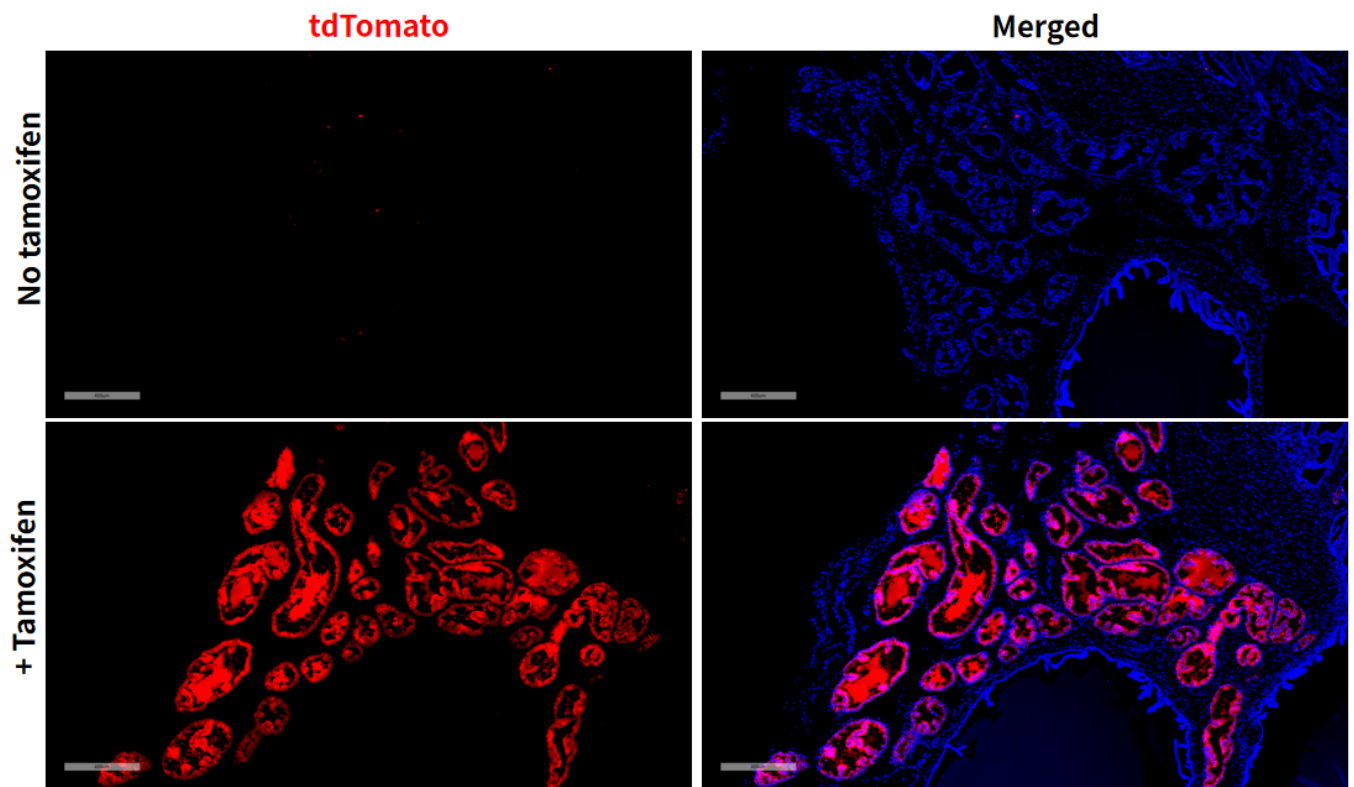


Fig2. Cre mediated recombination in prostate of  $PbsnCreERT2/+;Rosa26tdTomato/+$  mouse.

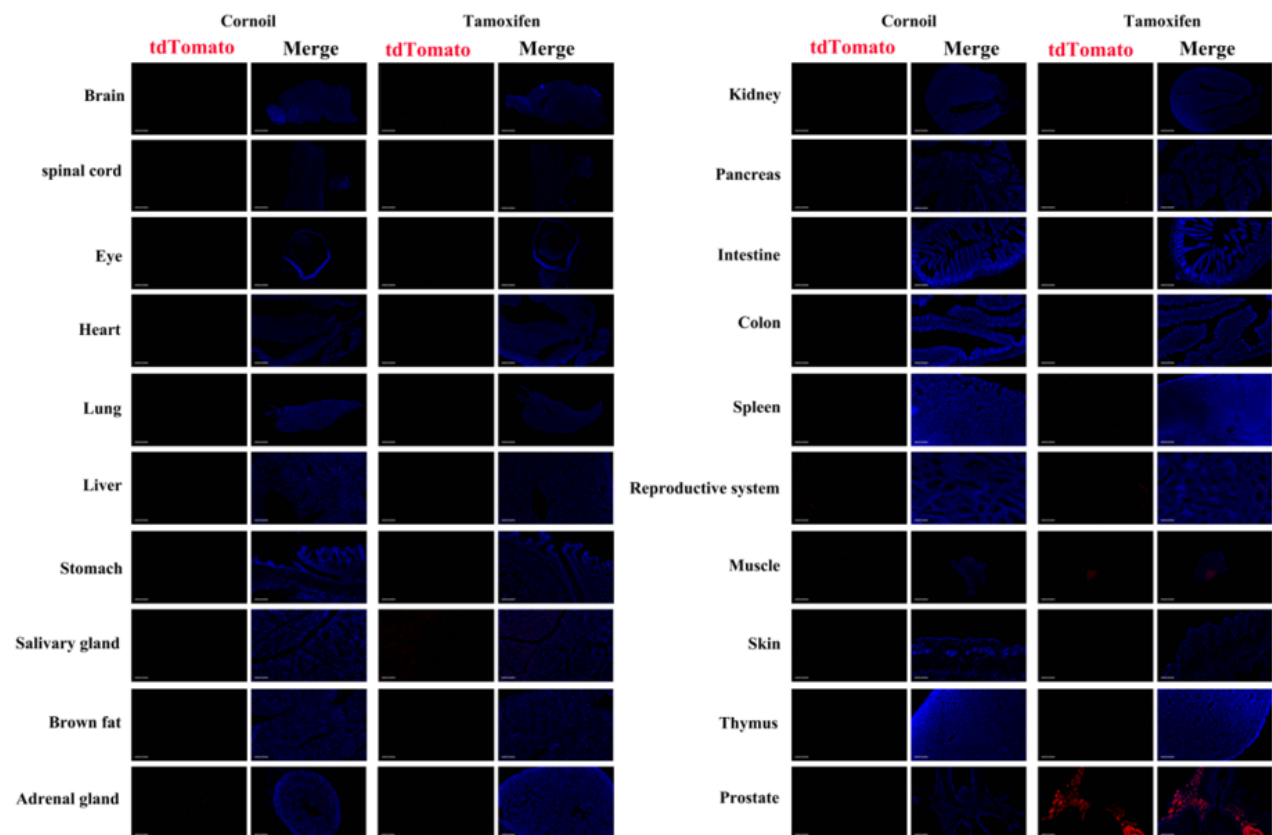


Fig3. Detection of tdTomato(red) in various tissues of  $PbsnCreERT2/+;Rosa26tdTomato/+$  mouse. Expression tissues include: prostate, salivary gland. A few

cells expressed in adrenal gland, pancreas, testis, muscle and thymus. Tissues that unexpressed include brain, spinal cord, eyeball, heart, lung, liver, stomach, brown fat, kidney, colon, small intestine, spleen, and skin. (9-week old, male) (For more detailed information please contact our technical advisor.)

---