

MHCII/B2m-KO(NMG)

Nomenclature	NOD.Cg-Prkdc ^{scid} Il2rg ^{em15moc} H2-Ab1 ^{em15moc} H2-Aa ^{em15moc} H2-Eb1 ^{em15moc} H2-Eb2 ^{em15moc} H2-Ea-ps ^{em15moc} B2m ^{em15moc}
Cat. NO.	NM-NSG-014
Strain State	Repository Live

Gene Summary

Gene Symbol B2M	Synonyms	y-m11; beta2m; beta2-m
	NCBI ID	12010
	MGI ID	88127
	Ensembl ID	ENSMUSG00000060802
	Human Ortholog	B2M
Gene Symbol MHCII(H2-Ab1; H2-Aa; H2-Eb1; H2-Eb2; H2-Ea)	Synonyms	IAb; Ia2; Ia-2; Abeta; H-2Ab; H2-Ab; Rmcs1; I-Abeta; A1845868 Ia1; H2Aa; Ia-1; H-2Aa; Aalpha; IAalpha; I-Aalpha Eb; Ia4; H2Eb; Ia-4; H-2Eb Ia5; Ia-5; H-2Eb2; Iebeta2; A130038H09Rik MHC-H2-Ea; Ia3; Ia-3; H-2Ea; A1323765;
	NCBI ID	14961 ; 14960 ; 14969 ; 381091 ; 100504404
	MGI ID	103070 ; 95895 ; 95901 ; 95902 ; 95900
	Ensembl ID	ENSMUSG00000073421 ; ENSMUSG00000036594 ; ENSMUSG00000060586 ; ENSMUSG00000067341 ; ENSMUSG00000036322

Model Description

All sequences from the upstream of mouse H2-Ab1 gene exon 2 to the upstream of the H2-Ea-ps gene exon 1 were knocked out to obtain H2-Ab1、H2-Aa、H2-Eb1、H2-Eb2、H2-Ea-ps knockout mouse models. Also, B2m gene was knocked out. These MHC class I and II molecule-deficient mice were on the NMG genetic background and also lacked cell surface expression of both class II-A and class II-E MHC proteins and B2m of class I.

Research Application: Immunodeficiency, immune system, transplantation research

*Literature published using this strain should indicate: MHCII/B2m-KO(NMG) mice (Cat. NO. NM-NSG-014) were purchased from Shanghai Model Organisms Center, Inc..

Validation Data

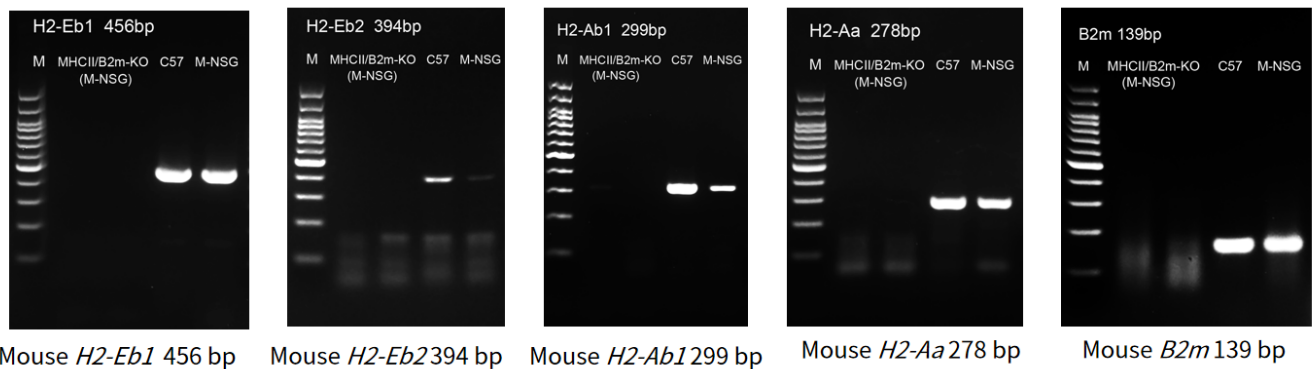


Fig1. Detection of *MHCII* and *B2m* expression in spleen in MHCII/B2M-dKO (M-NSG) mice by RT-PCR.

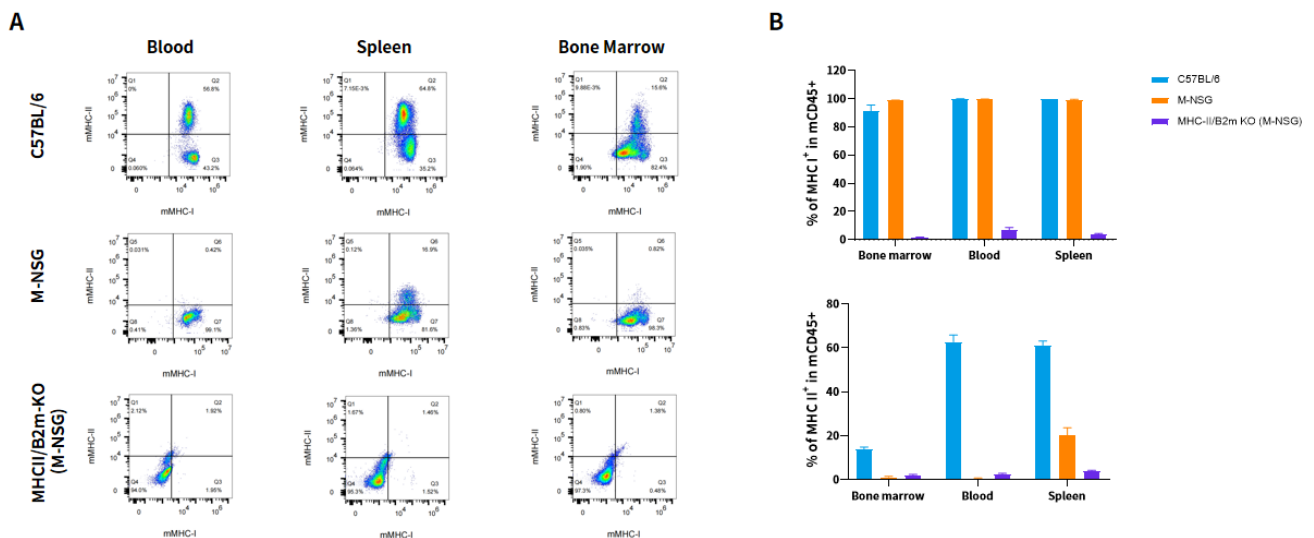


Fig2. Expression characterization of mouse MHC I and MHC II in MHCII/B2M-dKO (M-NSG) mice.