

Ace2-2A-CreERT2

Nomenclature	C57BL/6Smoc- <i>Ace2</i> ^{em2(2A-CreERT2-WPRE-polyA)Smoc}
Cat. NO.	NM-KI-200187
Strain State	Repository Live

Gene Summary

Gene Symbol ACE2	Synonyms	ACEH
	NCBI ID	59272
	MGI ID	Null
	Ensembl ID	ENSG00000130234
	Human Ortholog	ACE2

Model Description

A 2A-CreERT2-WPRE-polyA expression cassette was knocked into the *Ace2* gene stop codon site. *Ace2* encodes angiotensin I converting enzyme 2. When crossed with a strain carrying a gene flanked by loxP sites, the flanked gene will be removed in cells expressing Cre. This strain is useful for studying lung injury and kidney disease caused by SARS coronavirus infection.

Research Application: Cre recombinase tool

*Literature published using this strain should indicate: *Ace2-2A-CreERT2* mice (Cat. NO. NM-KI-200187) were purchased from Shanghai Model Organisms Center, Inc..

Validation Data

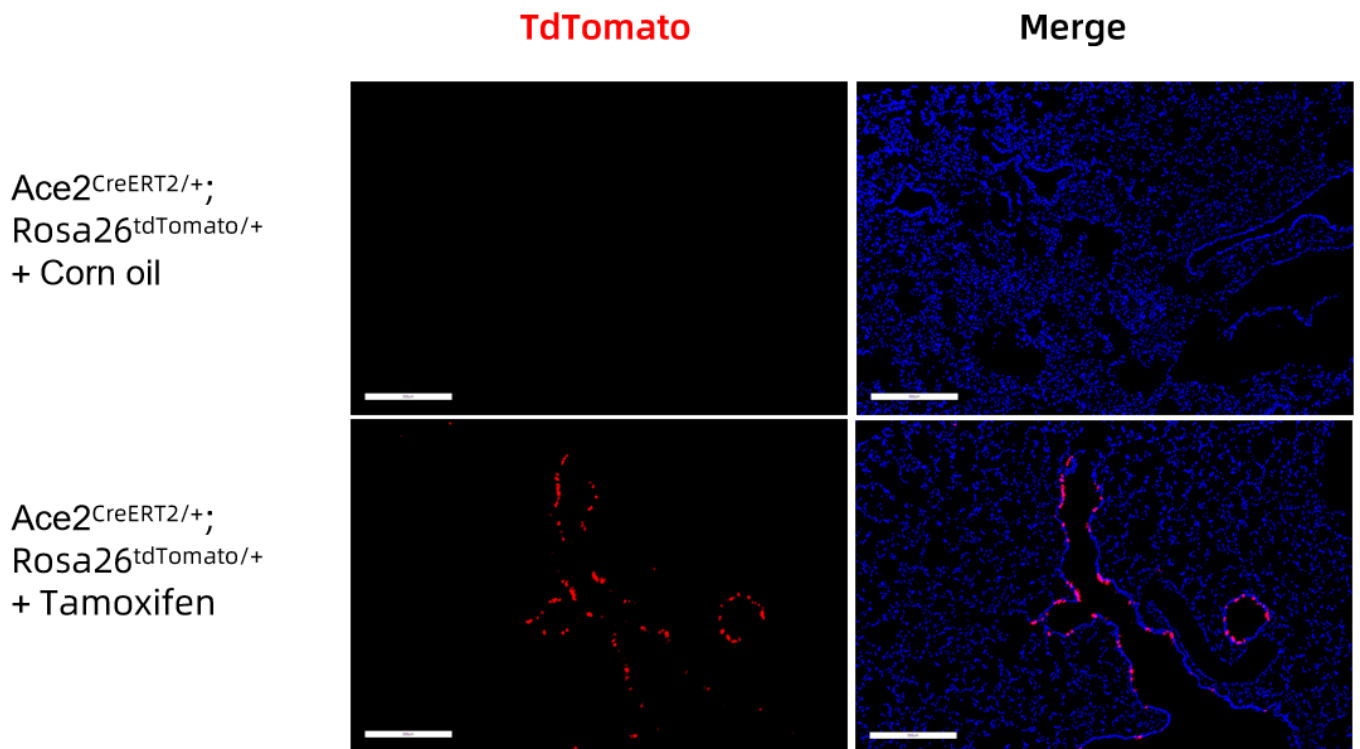


Fig. 1 CreERT2-mediated recombination in the lung of $Ace2^{CreERT2/+}; Rosa26^{tdTomato/+}$ mouse. TdTomato(red) expression can be detected in the pulmonary bronchial epithelial cells of $Ace2^{CreERT2/+}; Rosa26^{tdTomato/+}$ mouse after tamoxifen treatment.

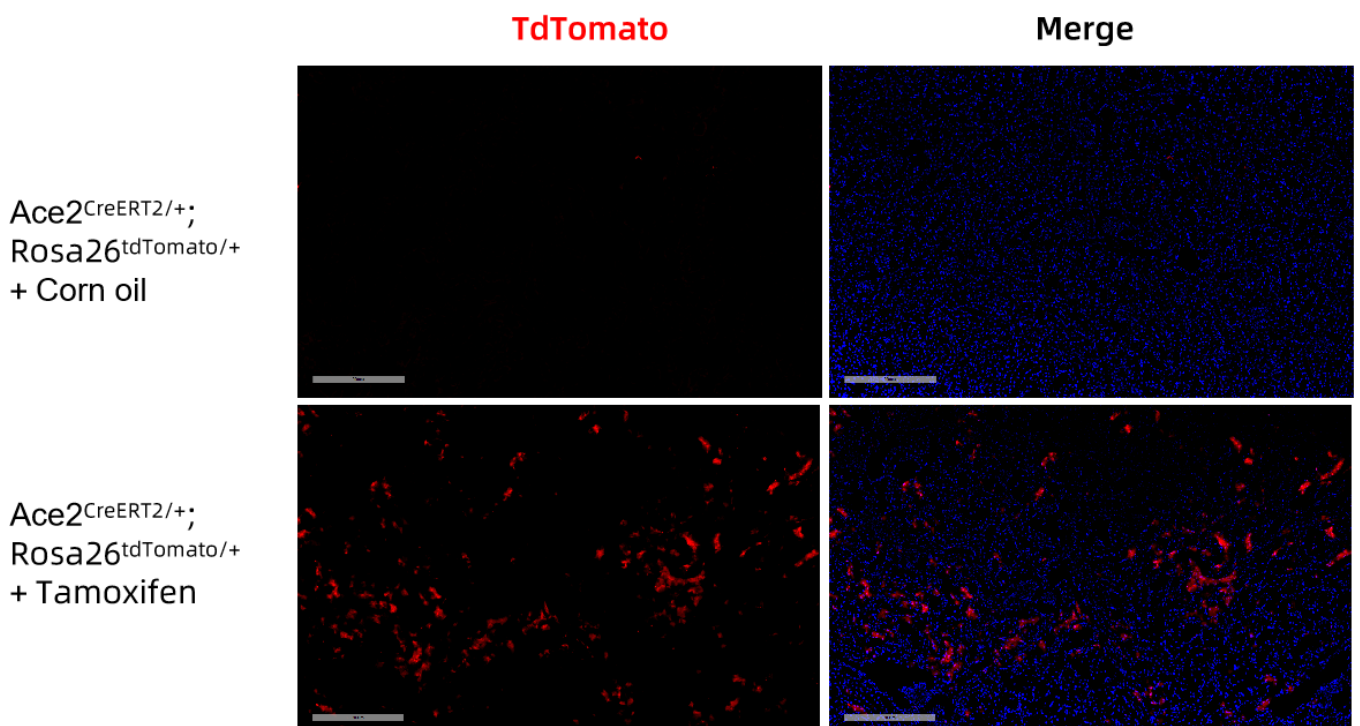


Fig. 2 CreERT2-mediated recombination in the kidney of $Ace2^{CreERT2/+}; Rosa26^{tdTomato/+}$ mouse. TdTomato(red) expression can be detected in the proximal tubule of $Ace2^{CreERT2/+}; Rosa26^{tdTomato/+}$ mouse after tamoxifen treatment.

