

R26-CAG-LSL-hACE2-IRES-tdTomato

Nomenclature	C57BL/6Smoc- <i>Gt(ROSA)26Sor</i> ^{em1(SA-FRT-2xpolyA-CAG-FRT-Loxp-stop-loxp-human ACE2-IRES-tdTomato-WPRE-polyA)Smoc}
Cat. NO.	NM-KI-200188
Strain State	Embryo cryopreservation

Gene Summary

Gene Symbol Gt(ROSA)26Sor	Synonyms	R26, ROSA26, AV258896, Gtrg eo26, Gtrosa26, Thumpd3as1
	NCBI ID	14910
	MGI ID	104735
	Ensembl ID	ENSMUSG00000086429

Model Description

These mice harbor a SA-FRT-2xpolyA-CAG-FRT-Loxp-stop-loxp-human ACE2-IRES-tdTomato-WPRE-polyAA cassette in the Rosa26 locus generated by homologous recombination.

Research Application: corona virus related research

*Literature published using this strain should indicate: R26-CAG-LSL-hACE2-IRES-tdTomato mice (Cat. NO. NM-KI-200188) were purchased from Shanghai Model Organisms Center, Inc..

Validation Data

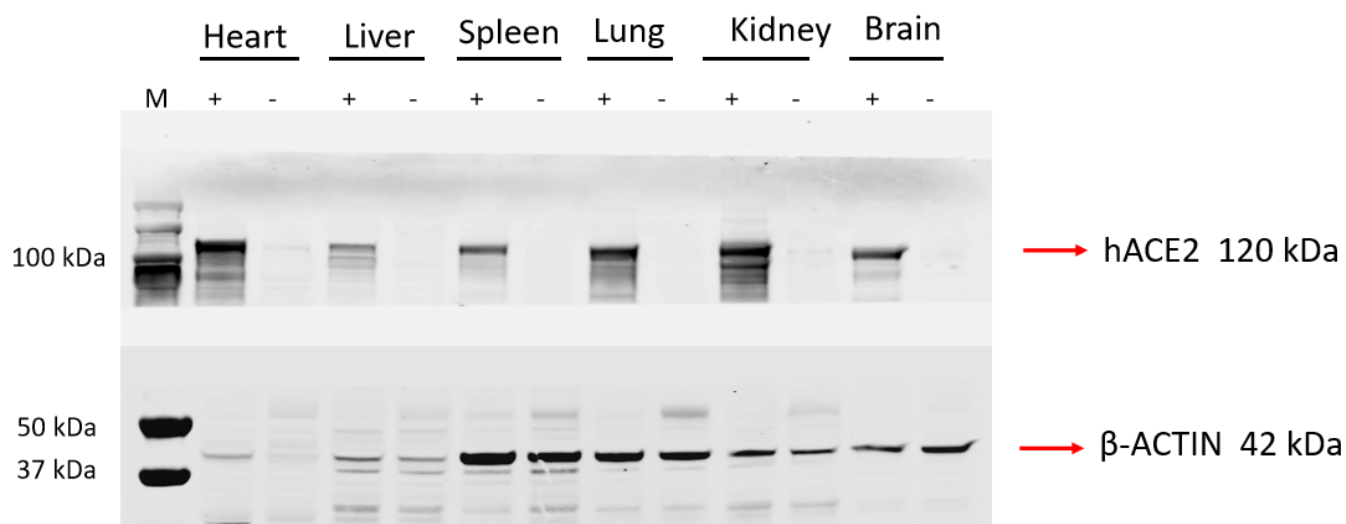


Fig1 Western blot analysis of human ACE2 protein expression in the tamoxifen-treated R26-CreERT2^{+/-} ; R26-hACE2^{+/-} mice.
