

hHER2

Nomenclature	C57BL/6Smoc- <i>ErbB2</i> ^{tm1(hERBB2)Smoc}
Cat. NO.	NM-HU-200115
Strain State	Repository Live

Gene Summary

Gene Symbol ErbB2	Synonyms	Neu; HER2; HER-2; c-neu; ErbB-2; c-erbB2; l11Jus8; mKIAA3023
	NCBI ID	13866
	MGI ID	95410
	Ensembl ID	ENSMUSG00000062312
	Human Ortholog	ERBB2

Model Description

The endogenous mouse *ErbB2* gene was replaced by human ERBB2 gene.

Research Application: Immune-related; tumor research; drug screening

*Literature published using this strain should indicate: hHER2 mice (Cat. NO. NM-HU-200115) were purchased from Shanghai Model Organisms Center, Inc..

Validation Data

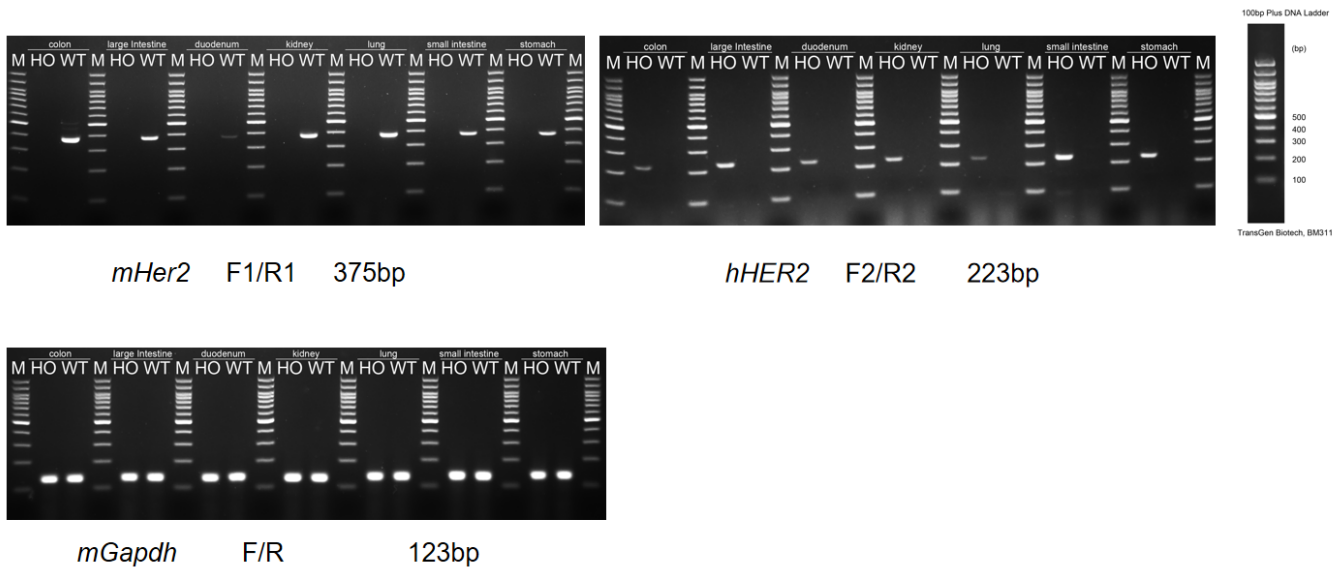


Fig1. Detection of HER2 expression by RT-PCR.

Wild type: only one band at 375 bp with primers F1/R1 (*mHer2*);

Homozygous: one band at 223 bp with primers F2/R2 (*hHER2*).

Abbr. M, DNA marker; HO, homozygous; WT, wild type.

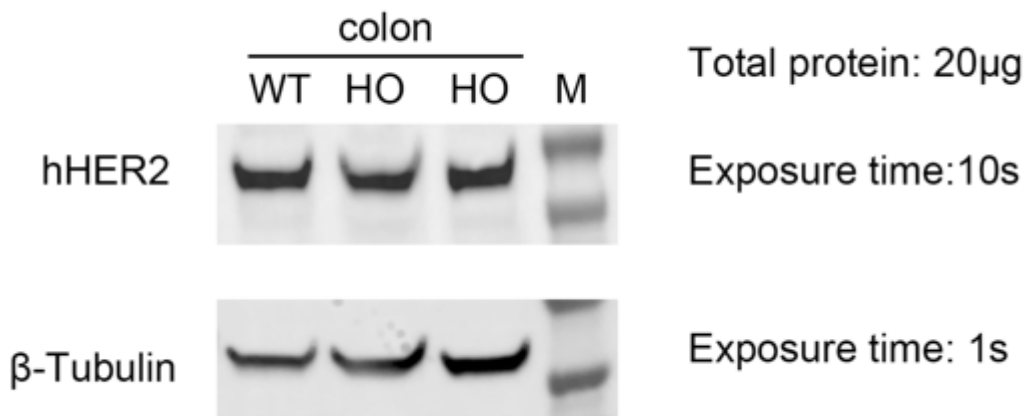


Fig2. Detection of HER2 expression in homozygous *hHER2* mice by Western Blot.

(Note: The HER2 antibody cross-reacted with *mHER2* and humanized HER2)