

# CD8a-IRES-Luc-2A-tdTomato (BALB/c)

|                     |   |
|---------------------|---|
| <b>Nomenclature</b> | BALB/cAnSmoc- <i>CD8a</i> <sup>em5(IRES-Akaluc-2A-tdTomato)Smoc</sup> |
| <b>Cat. NO.</b>     | NM-KI-200208  |
| <b>Strain State</b> | Embryo cryopreservation   |

## Gene Summary

|                            |                       |                                       |
|----------------------------|-----------------------|---------------------------------------|
| <b>Gene Symbol</b><br>Cd8a | <b>Synonyms</b>       | Ly-2; Ly-B; Ly-35; Lyt-2;<br>BB154331 |
|                            | <b>NCBI ID</b>        | <a href="#">12525</a>                 |
|                            | <b>MGI ID</b>         | <a href="#">88346</a>                 |
|                            | <b>Ensembl ID</b>     | <a href="#">ENSMUSG00000053977</a>    |
|                            | <b>Human Ortholog</b> | CD8A                                  |

## Model Description

A IRES-luci-2A-tdTomato expression cassette was knocked into the CD8a gene stop codon site.

**Research Application:** Fluorescence Tracer Mice

\*Literature published using this strain should indicate: CD8a-IRES-Luc-2A-tdTomato (BALB/c) mice (Cat. NO. NM-KI-200208) were purchased from Shanghai Model Organisms Center, Inc..

## Validation Data

WT      CD8a-Luc

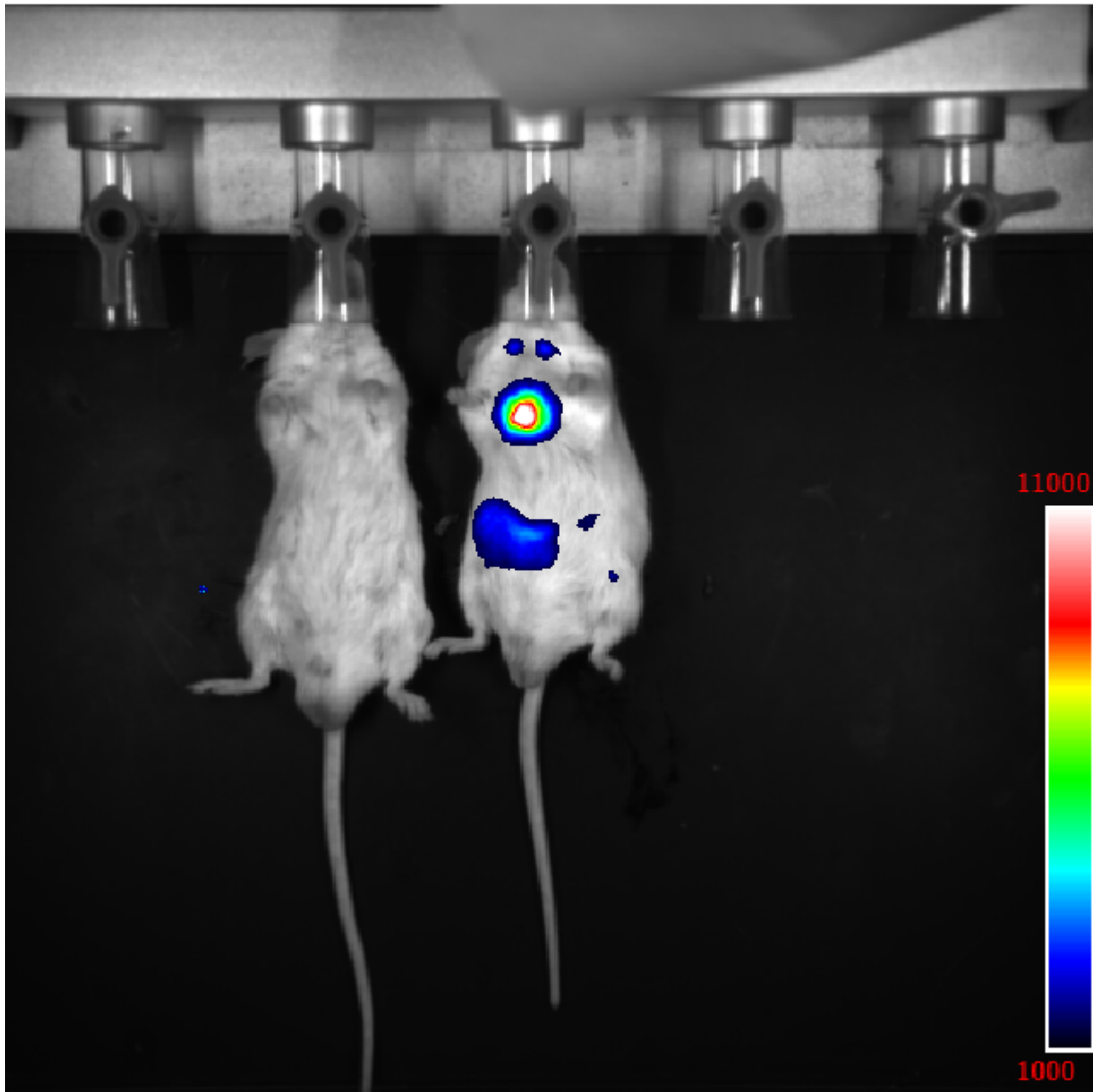


Fig1. CD8a reporter gene expression was monitored through noninvasive molecular imaging. The heterozygous KI mice showed significant fluorescence in thymus, spleen, lung and liver.

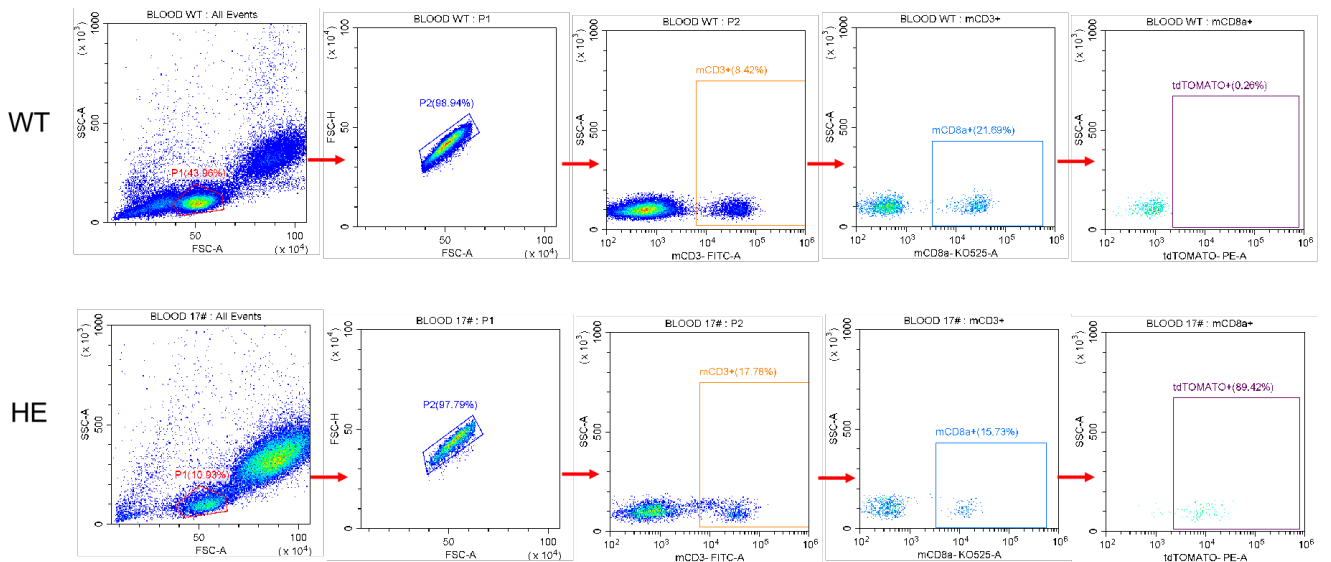


Fig2. Analysis of tdTomato expression in CD8a+ cells by FACS. The heterozygous KI mice express tdTomato in CD8a+ cells.