

# Foxp3-IRES-DTR-2A-tdTomato(BALB/c)

<b>Nomenclature</b>	BALB/cAnSmoc- <i>Foxp3</i> <sup>em9(IRES-DTR-2A-tdTomato)Smoc</sup>
<b>Cat. NO.</b>	NM-KI-200213
<b>Strain State</b>	Embryo cryopreservation

## Gene Summary

<b>Gene Symbol</b> <b>Foxp3</b>	<b>Synonyms</b>	sf; JM2; scurfin
	<b>NCBI ID</b>	<a href="#">20371</a>
	<b>MGI ID</b>	<a href="#">1891436</a>
	<b>Ensembl ID</b>	<a href="#">ENSMUSG00000039521</a>
	<b>Human Ortholog</b>	FOXP3

## Model Description

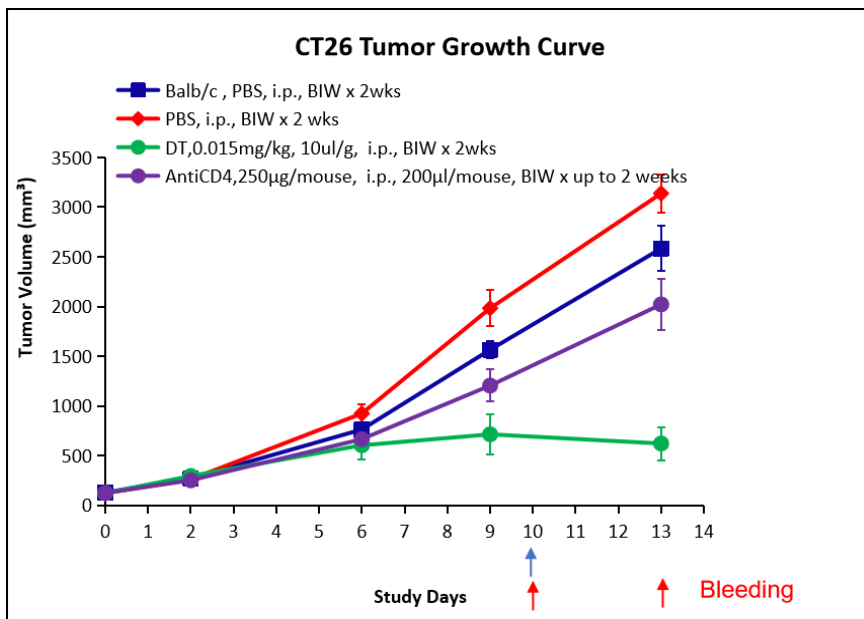
A IRES-DTR-2A-tdTomato expression cassette was knocked into the Foxp3 gene stop codon site.

**Research Application:** DTR tool mice

\*Literature published using this strain should indicate: Foxp3-IRES-DTR-2A-tdTomato(BALB/c) mice (Cat. NO. NM-KI-200213) were purchased from Shanghai Model Organisms Center, Inc..

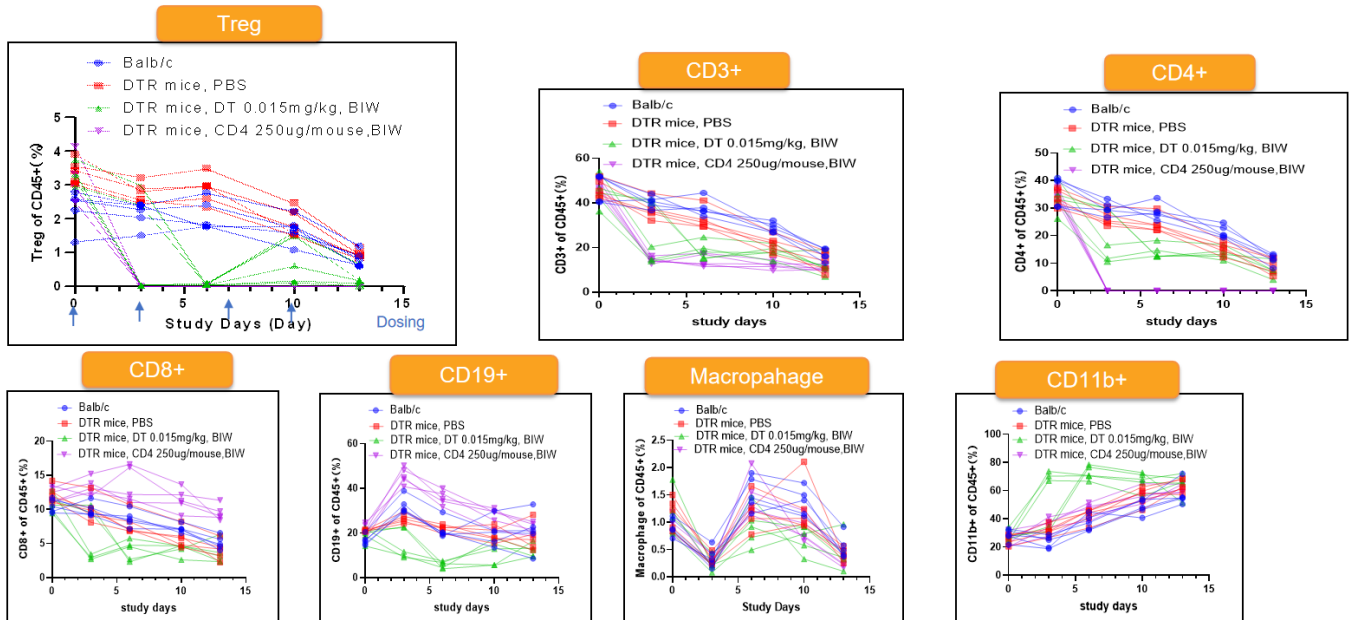
## Validation Data

CT 26 tumor cells were injected into FOXP3-DTR mice administered with different treatment, and Balb/c mice, respectively. And tumor growth curves of each group were recorded.



**Fig 1. The growth of CT26 tumors in Foxp3-IRES-DTR-2A-tdTomato mice administered with different treatment and Balb/c mice. (In collaboration with CrownBio)**

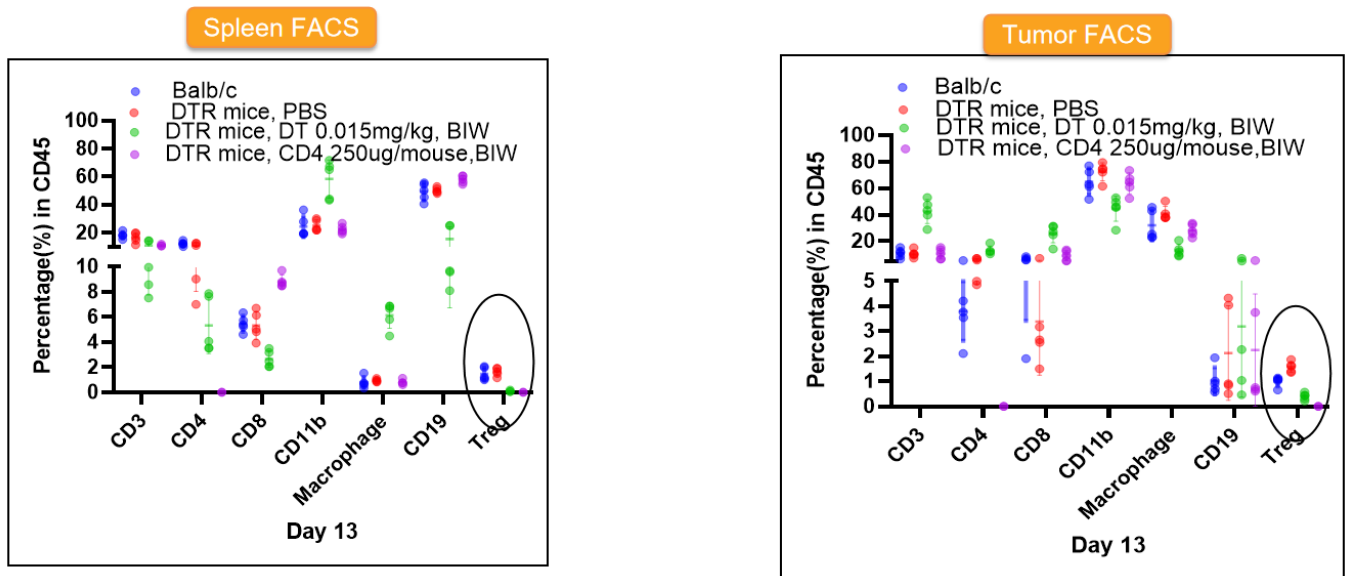
Proportion of different type-specific T cells and macrophages in peripheral blood of each group analyzed using FACS



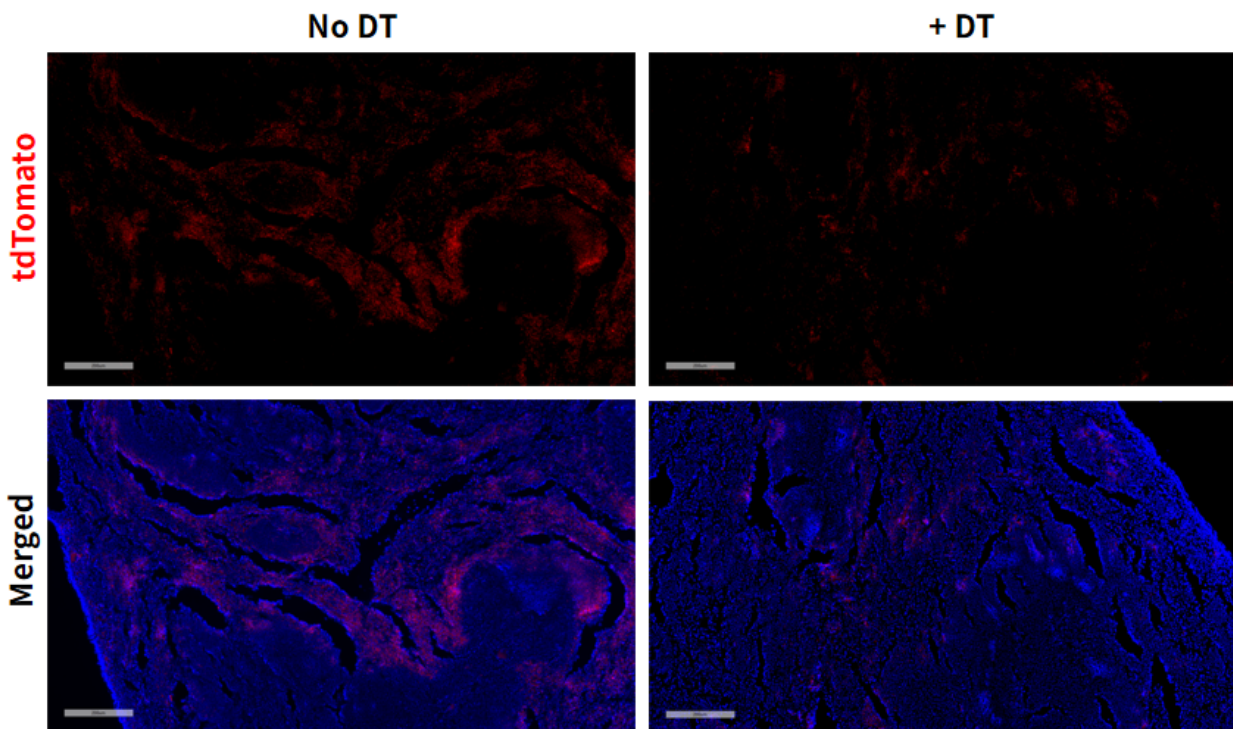
**Fig 2. The percentage of different type-specific T cells and macrophages in peripheral blood of CT26 tumor-bearing Foxp3-IRES-DTR-2A-tdTomato mice administered with different treatment and Balb/c mice is detected by FACS. (In collaboration with CrownBio)**

Proportion of different type-specific T cells and macrophages in spleen and tumor of each group

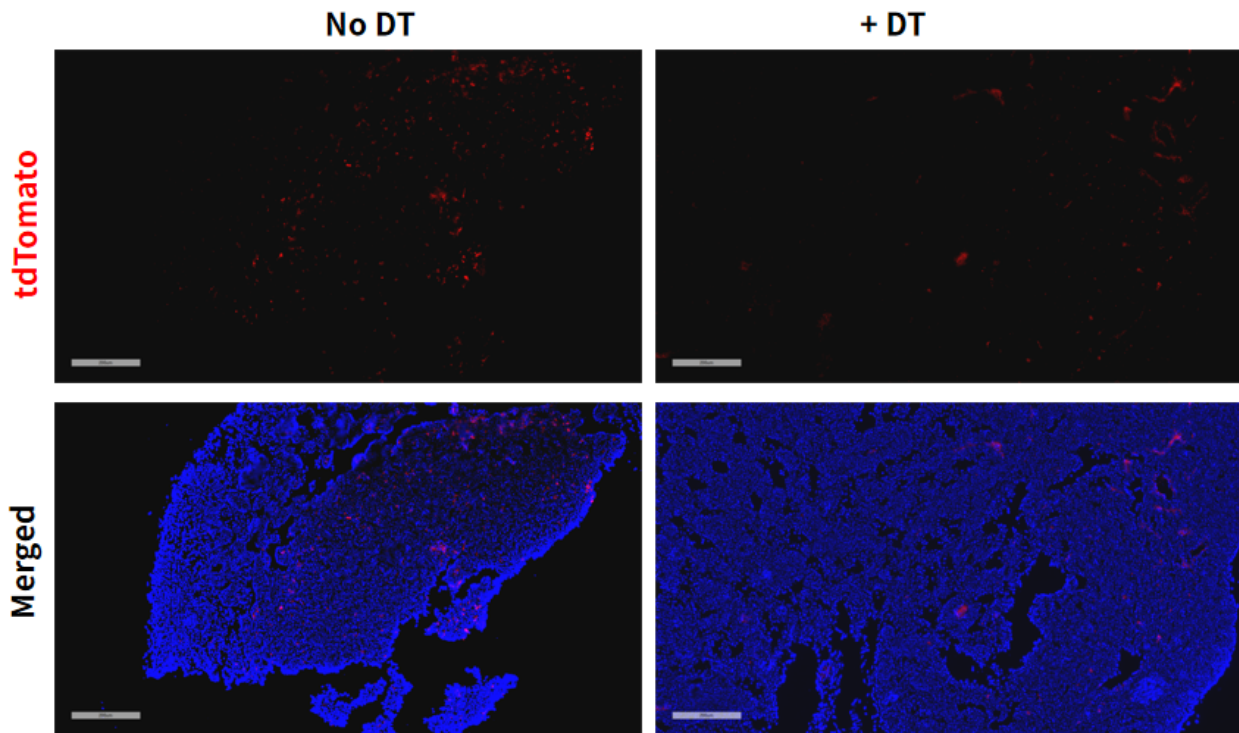
analyzed using FACS



**Fig 3. The percentage of different type-specific T cells and macrophages in spleen and tumor of CT26 tumor-bearing Foxp3-IRES-DTR-2A-tdTomato mice administered with different treatment and Balb/c mice is detected by FACS. (In collaboration with CrownBio)**



**Fig 4. DTR mediated cell knockout in spleen of Foxp3-DTR/tdTomato mice (BALB/c).**



**Fig 5. DTR mediated cell knockout in mesenteric lymph nodes of Foxp3-DTR/tdTomato mice(BALB/c).**