

Gpr141b-IRES-Cre

| | |
|---------------------|---|
| Nomenclature | C57BL/6Smoc- <i>Gpr141b</i> ^{em1(IRES-iCre)Smoc} |
| Cat. NO. | NM-KI-200215 |
| Strain State | Embryo cryopreservation |

Gene Summary

| | | |
|--------------------|-----------------------|------------------------------------|
| Gene Symbol | Synonyms | Ka, Karma, A530099J19Rik |
| | NCBI ID | 319293 |
| | MGI ID | 2441809 |
| | Ensembl ID | ENSMUSG00000047462 |
| | Human Ortholog | GPR141B |

Model Description

A IRES-iCre expression cassette was knocked into the *Gpr141b* gene start codon site.

Research Application: Cre tool mice

*Literature published using this strain should indicate: *Gpr141b*-IRES-Cre mice (Cat. NO. NM-KI-200215) were purchased from Shanghai Model Organisms Center, Inc..

Validation Data

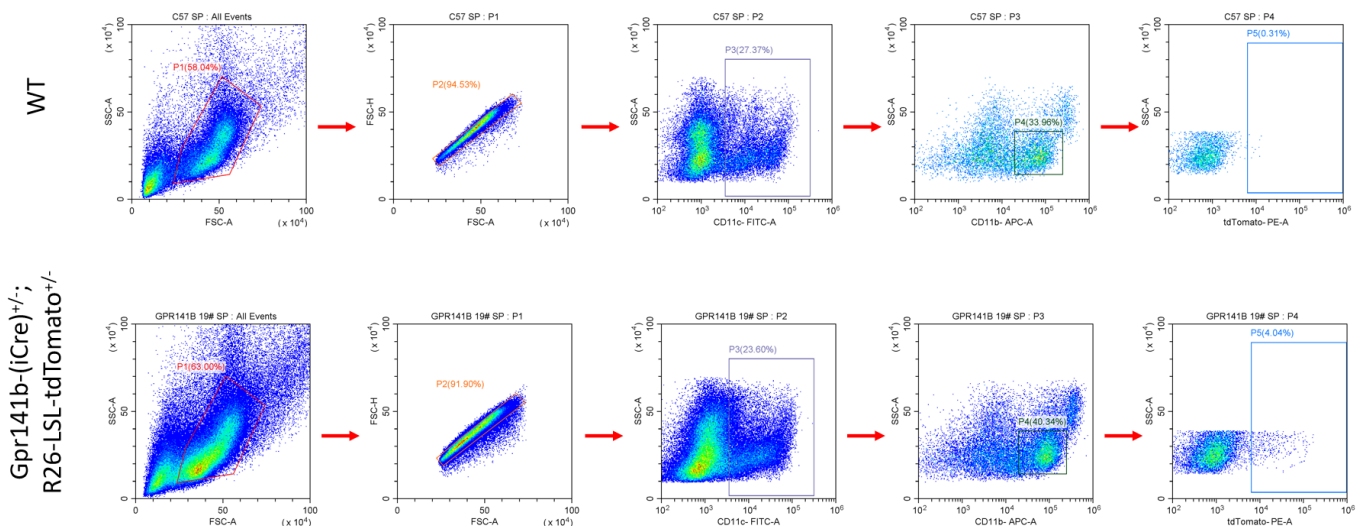


Figure 1. FACS analysis of tdTomato expression in Type 1 conditional dendritic cells (cDC1) derived from the spleen in the Gpr141b-(iCre)^{+/-}; R26-LSL-tdTomato^{+/-} mouse model.
