

Ly6g-2A-CreERT2

Nomenclature	C57BL/6Smoc- <i>Ly6g</i> ^{em3(2A-CreERT2)Smoc}
Cat. NO.	NM-KI-200218
Strain State	Repository Live

Gene Summary

Gene Symbol Ly6g	Synonyms	Gr1; Gr-1; Ly-6G
	NCBI ID	546644
	MGI ID	109440
	Ensembl ID	ENSMUSG00000022582
	Human Ortholog	LY6G

Model Description

A 2A-CreERT2 expression cassette was knocked into the Ly6g gene start codon site.

Research Application: Cre tool mice

*Literature published using this strain should indicate: Ly6g-2A-CreERT2 mice (Cat. NO. NM-KI-200218) were purchased from Shanghai Model Organisms Center, Inc..

Validation Data

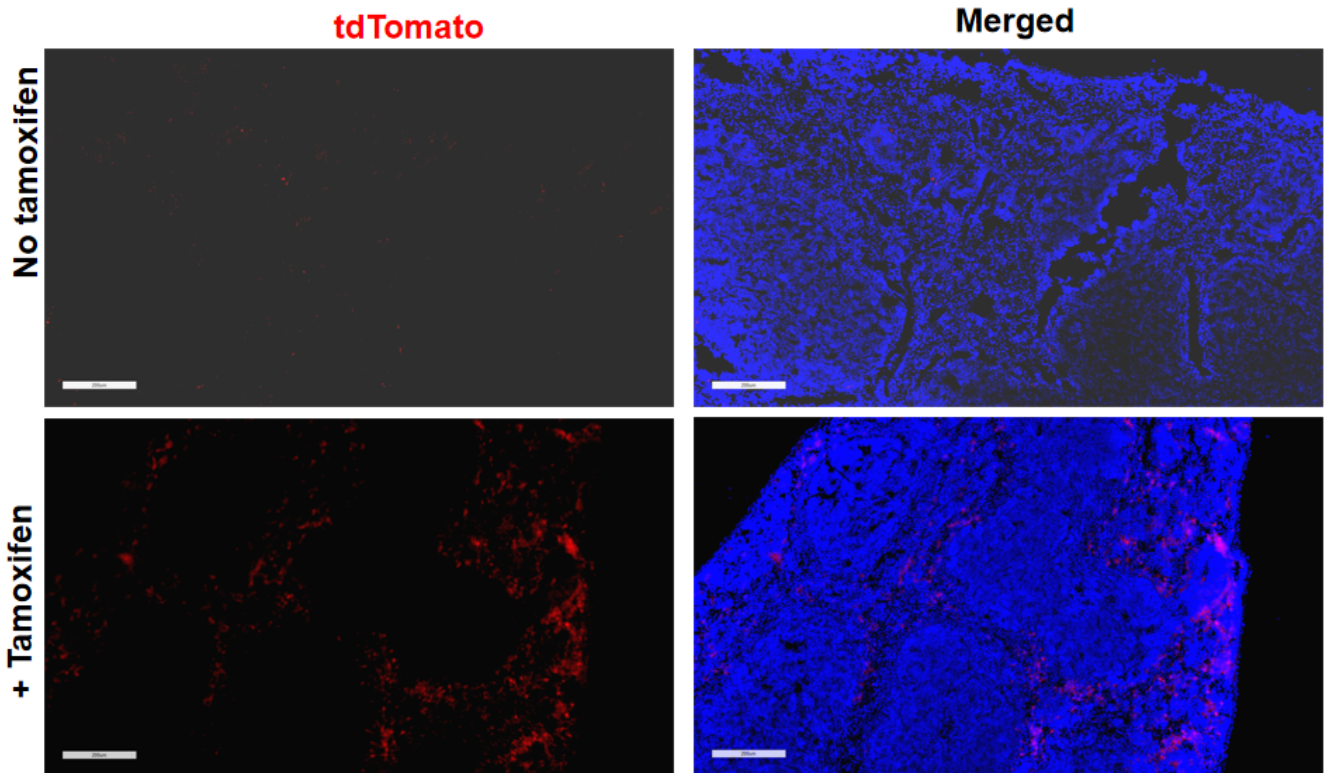


Fig1. Cre mediated recombination in spleen of $Ly6gCreERT2/+;Rosa26tdTomato/+$ mouse.

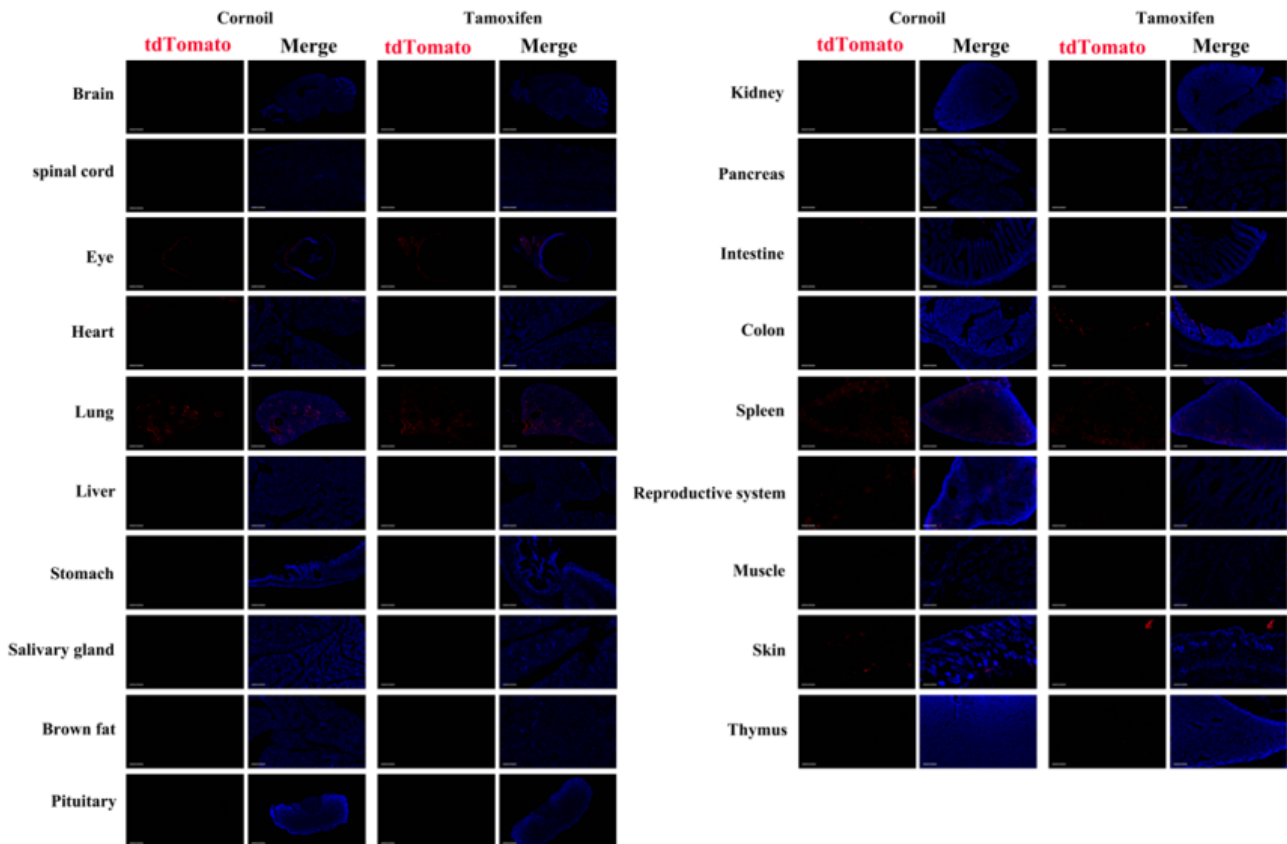


Fig2. Detection of tdTomato(red) in various tissues of $Ly6gCreERT2/+;Rosa26tdTomato/+$ mouse. Expression tissues include: spleen, colon, lung. A few cells expressed in testis, thymus. Tissues that unexpressed include brain, spinal cord, retina, heart,

liver, stomach, salivary glands, brown fat, pituitary gland, kidney, pancreas, small intestine, muscle and epidermis. (8-weeks old, male) (For more detailed information please contact our technical advisor.)
