

R26-CAG-LSL-hFCGR2A-IRES-EGFP

Nomenclature	C57BL/6Smoc- <i>Gt(ROSA)26Sor</i> ^{em1(SA-FRT-2xpA-CAG-FRT-loxp-STOP-loxp-FCGR2A-IRES-EGFP-WPRE-polyA)Smoc}
Cat. NO.	NM-KI-200229
Strain State	Embryo cryopreservation

Gene Summary

Gene Symbol Gt(ROSA)26Sor	Synonyms	R26, ROSA26, AV258896, Gtrg eo26, Gtrosa26, Thumpd3as1
	NCBI ID	14910
	MGI ID	104735
	Ensembl ID	ENSMUSG00000086429

Model Description

These mice harbor a SA-FRT-2xpA-CAG-FRT-loxp-STOP-loxp-FCGR2A-IRES-EGFP-WPRE-polyA cassette in the Rosa26 locus generated by homologous recombination.

Research Application: Fluorescence Tracer Mice

*Literature published using this strain should indicate: R26-CAG-LSL-hFCGR2A-IRES-EGFP mice (Cat. NO. NM-KI-200229) were purchased from Shanghai Model Organisms Center, Inc..

Validation Data

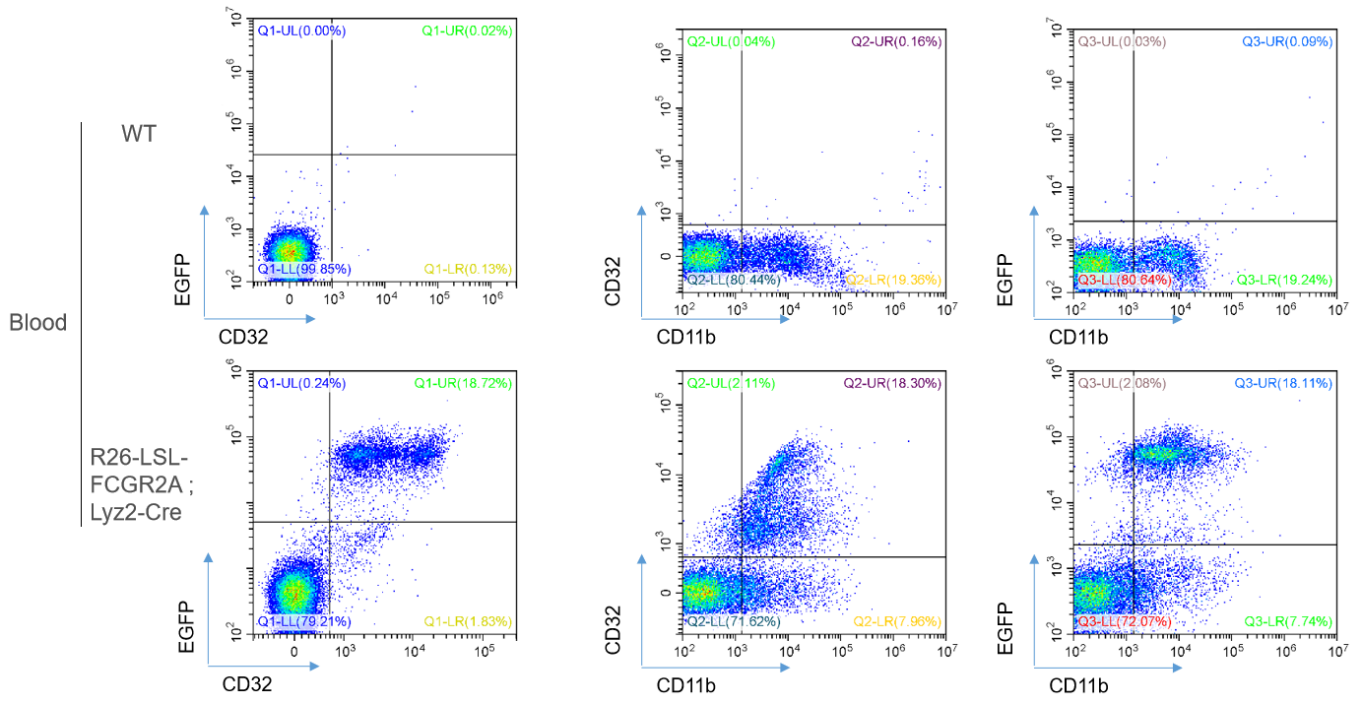


Fig1. Detection of CD32 expression in peripheral blood of R26-LSL-FCGR2A ; Lyz2-Cre mice.

The FACS shows that the active expression of humanized CD32 was detected in CD11b positive cells collected from R26-LSL-FCGR2A ; Lyz2-Cre mice.