

# Xcr1-IRES-Cre

<b>Nomenclature</b>	C57BL/6Smoc- <i>Xcr1</i> <sup>em1(IRES-iCre)Smoc</sup>
<b>Cat. NO.</b>	NM-KI-200237
<b>Strain State</b>	Repository Live

## Gene Summary

<b>Gene Symbol</b> Xcr1	<b>Synonyms</b>	Gpr5; mXcr1; Ccxcr1
	<b>NCBI ID</b>	<a href="#">23832</a>
	<b>MGI ID</b>	<a href="#">1346338</a>
	<b>Ensembl ID</b>	<a href="#">ENSMUSG00000060509</a>
	<b>Human Ortholog</b>	XCR1

## Model Description

A IRES-iCre expression cassette was knocked into the Xcr1 gene stop codon site.

**Research Application:** Cre tool mice

\*Literature published using this strain should indicate: Xcr1-IRES-Cre mice (Cat. NO. NM-KI-200237) were purchased from Shanghai Model Organisms Center, Inc..

## Validation Data

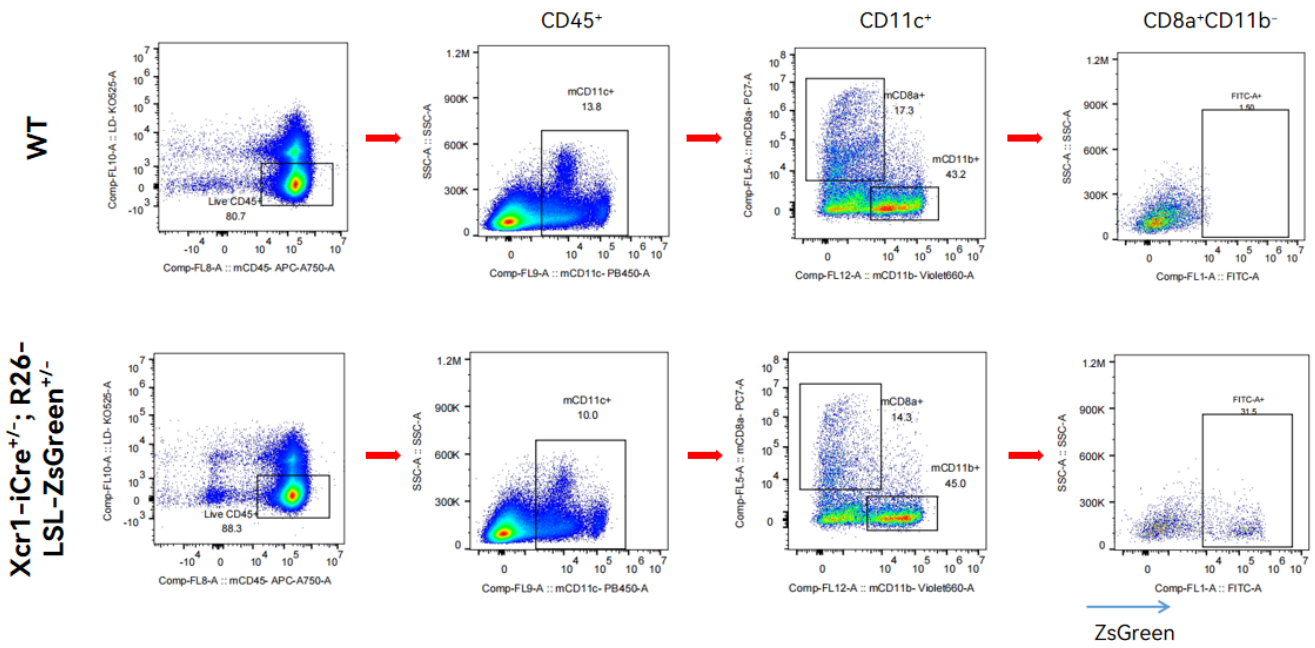


Figure 1. FACS analysis of ZsGreen expression in Type 1 conditional dendritic cells (cDC1) derived from the spleen in the *Xcr1-iCre<sup>+/-</sup>; R26-LSL-ZsGreen<sup>+/-</sup>* mouse model.