

# Tff1-2A-CreERT2

<b>Nomenclature</b>	C57BL/6Smoc- <i>Tff1</i> <sup>em1(2A-CreERT2-polyA)Smoc</sup>
<b>Cat. NO.</b>	NM-KI-200244
<b>Strain State</b>	Repository Live

## Gene Summary

<b>Gene Symbol</b> Tff1	<b>Synonyms</b>	PS2, Bcei
	<b>NCBI ID</b>	<a href="#">21784</a>
	<b>MGI ID</b>	<a href="#">88135</a>
	<b>Ensembl ID</b>	<a href="#">ENSMUSG00000024032</a>
	<b>Human Ortholog</b>	TFF1

## Model Description

A 2A-CreERT2-polyA expression cassette was knocked into the Tff1 gene start codon site.

**Research Application:** Cre tool mice

\*Literature published using this strain should indicate: Tff1-2A-CreERT2 mice (Cat. NO. NM-KI-200244) were purchased from Shanghai Model Organisms Center, Inc..

## Validation Data

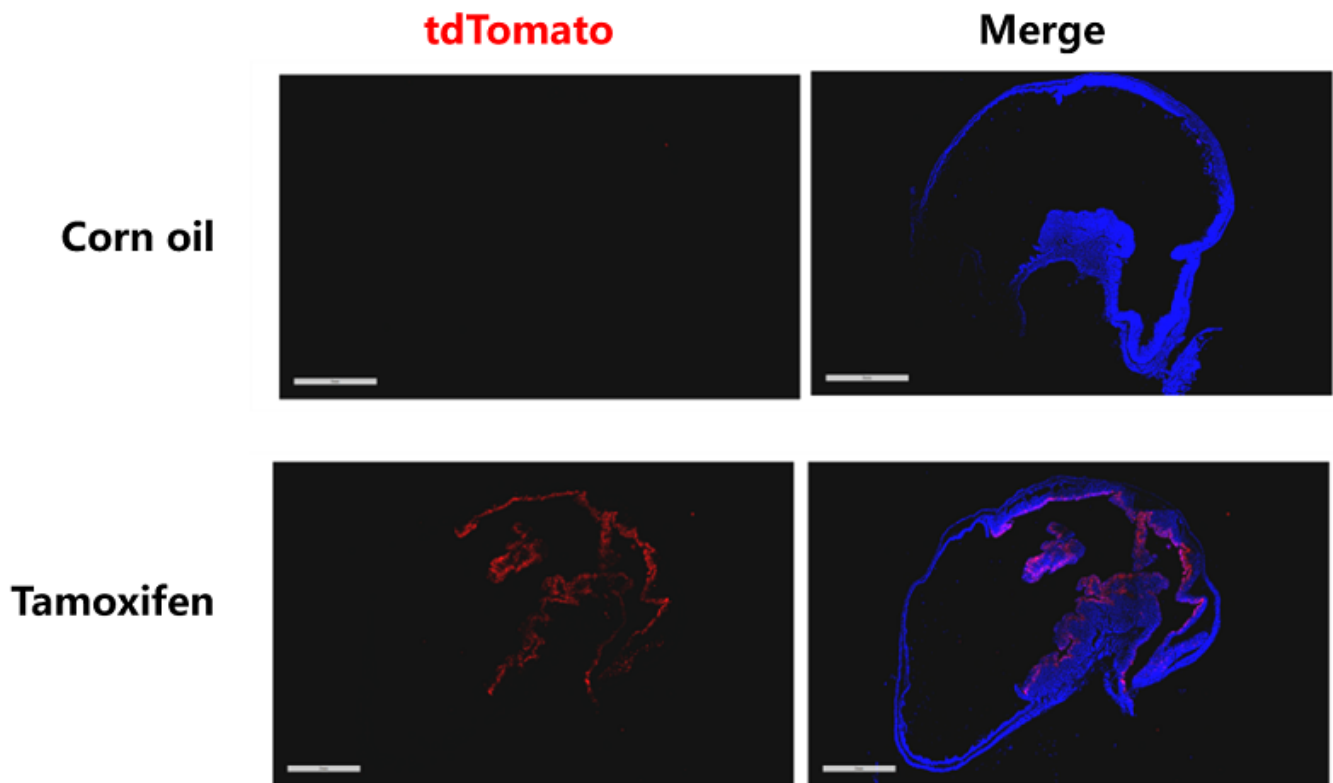


Fig. 1 Cre-mediated recombination in the gastric epithelial cells of *Tff1CreERT2/+; Rosa26tdTomato/+* mouse.

Detection of tdTomato (red) in the gastric epithelial cells of *Tff1CreERT2/+; Rosa26tdTomato/+* mouse after tamoxifen treatment.

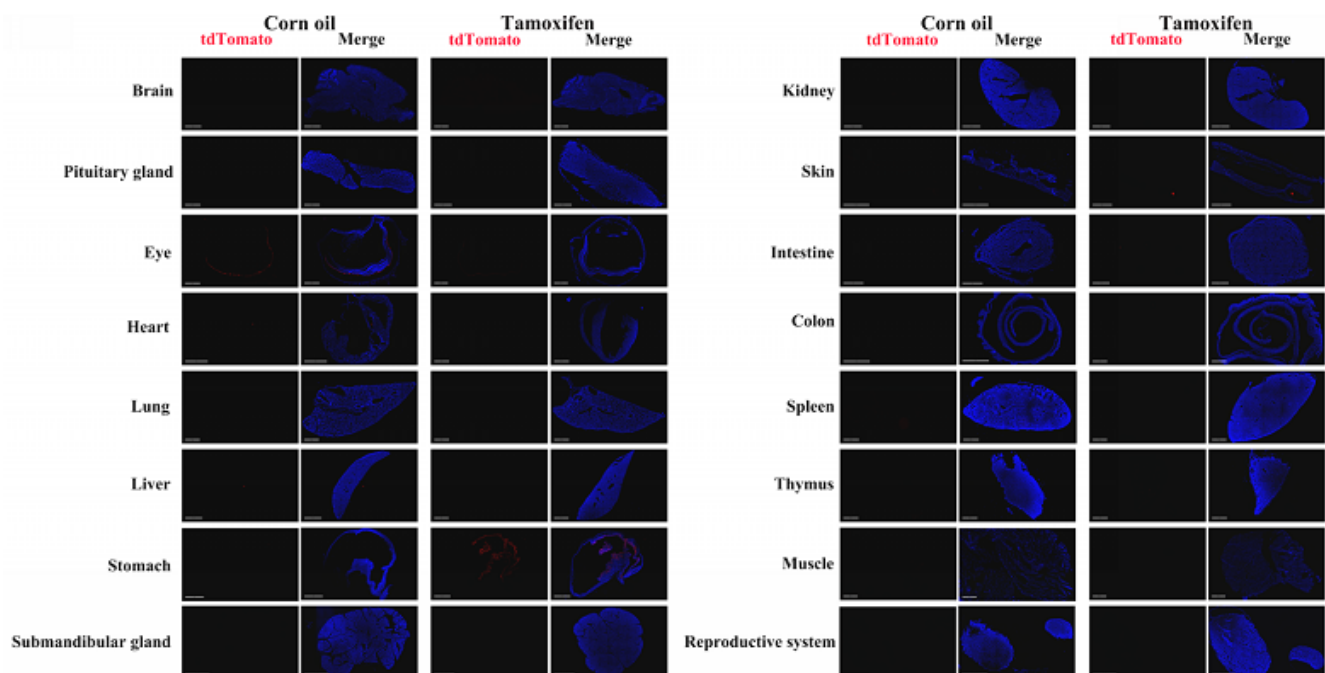


Fig.2 Detection of tdTomato (red) in various tissues of *Tff1Cre/+; Rosa26tdTomato/+* mice after tamoxifen treatment.

