

Alb-CreERT2

Nomenclature	B6.129S- <i>Alb</i> ^{tm1.1(CreERT2)Smoc}
Cat. NO.	NM-KI-00002
Strain State	Repository Live

Gene Summary

Gene Symbol ALB	Synonyms	Alb1; Alb-1; BCL002
	NCBI ID	11657
	MGI ID	87991
	Ensembl ID	ENSMUSG00000029368
	Human Ortholog	ALB

Model Description

Exons 1-7 were replaced by CreERT2 and a loxp neo cassette. The KI mice have a tamoxifen-inducible cre-mediated recombination system. This strain has removed the Neo screening gene.

Research Application: cre-mediated recombination system

*Literature published using this strain should indicate: Alb-CreERT2 mice (Cat. NO. NM-KI-00002) were purchased from Shanghai Model Organisms Center, Inc..

Validation Data

Alb-CreERT2;Rosa26-LacZ

Alb-CreERT2;Rosa26-LacZ
+Tamoxifen

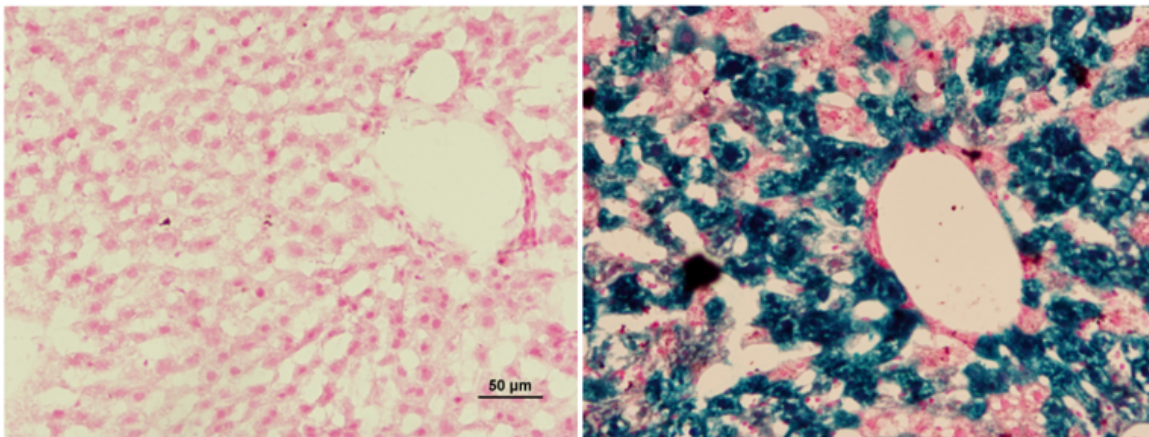


Fig1 X-gal staining of liver slides of Alb-CreERT2 and LacZ positive mouse before and after tamoxifen injection.

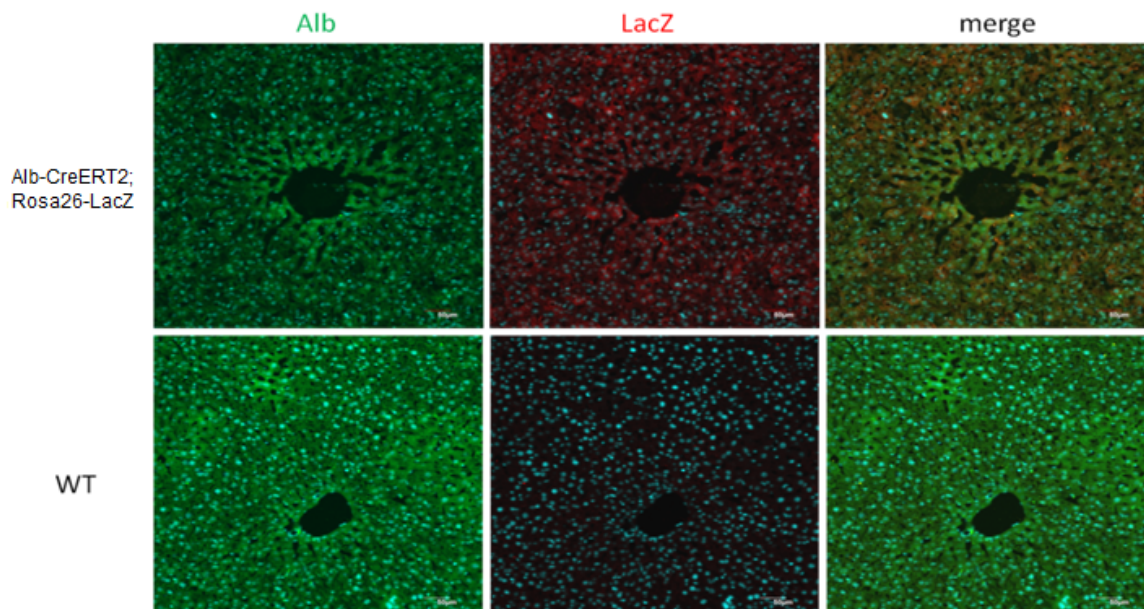


Fig2 Immunofluorescence analysis of liver using anti-Alb(Green) and anti-LacZ(Red) antibodies showed that Cre is expressed in most hepatocytes.

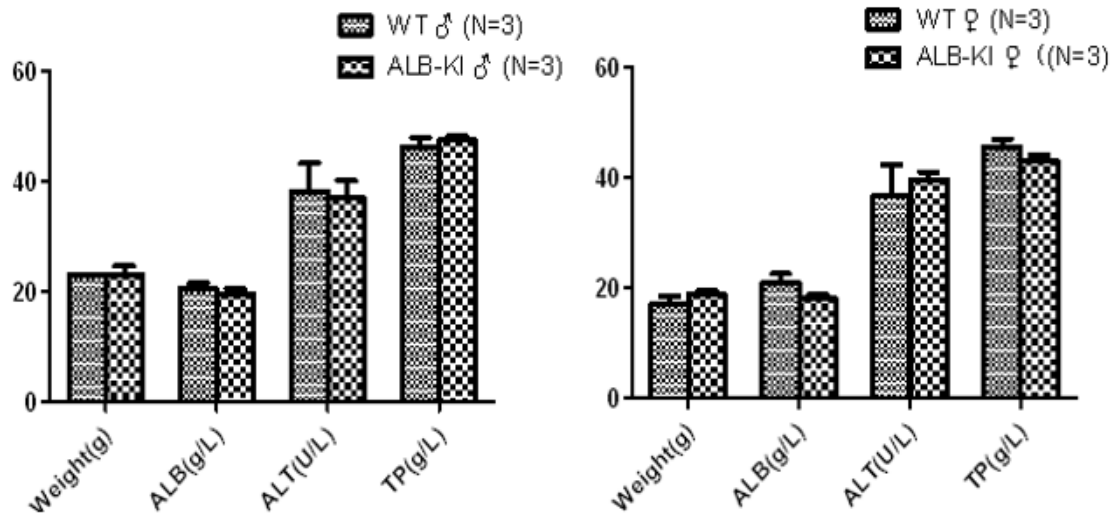


Fig3 Blood biochemical assay of Alb-CreERT2 male and female mice. Alb-CreERT2 mice do not display any liver functional abnormalities.

Publications

[Liver Soluble Epoxide Hydrolase Regulates Behavioral and Cellular Effects of Chronic Stress](#)

References: Cell Reports