

R26-SA-BirA

Nomenclature	B6;129S- <i>Gt(ROSA)26Sor</i> ^{tm1(SA-BirA-V5)Smoc}
Cat. NO.	NM-KI-00085
Strain State	Embryo cryopreservation

Gene Summary

Gene Symbol Gt(ROSA)26Sor	Synonyms	R26, ROSA26, AV258896, Gtrg eo26, Gtrosa26, Thumpd3as1
	NCBI ID	14910
	MGI ID	104735
	Ensembl ID	ENSMUSG00000086429

Model Description

A SA-BirA-polyA expression cassette was knocked in mouse Rosa26 loci . Heterozygous knockin mice developed normally.

*Literature published using this strain should indicate: R26-SA-BirA mice (Cat. NO. NM-KI-00085) were purchased from Shanghai Model Organisms Center, Inc..

Validation Data

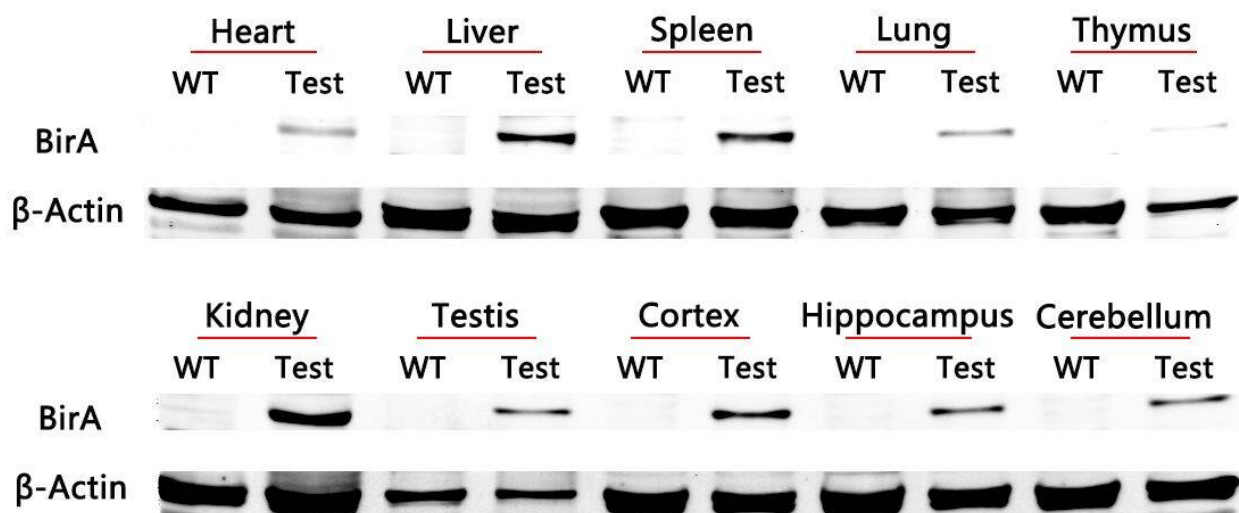


Fig1 BirA were detected in the multiple parts such as heart, liver, spleen, lung, thymus, kidney testis, cortex, hippocampus and cerebellum by western blot.
