

Dppa3-IRES-Cre

| | |
|---------------------|--|
| Nomenclature | C57BL/6Smoc- <i>Dppa3</i> ^{em1(IRES-Cre)Smoc} |
| Cat. NO. | NM-KI-00040 |
| Strain State | Repository Live |

Gene Summary

| | | |
|-----------------------------|-----------------------|--------------------------------------|
| Gene Symbol Dppa3 | Synonyms | PCG7; PGC7; Stella; 2410075G02Rik |
| | NCBI ID | 73708 |
| | MGI ID | 1920958 |
| | Ensembl ID | ENSMUSG00000046323 |
| | Human Ortholog | DPPA3 |

Model Description

The IRES-Cre cassette was inserted into 3'UTR of Dppa(Stella) gene which express during embryonic development.

Research Application: Dppa3 (also known as Pgc7 or Stella) plays an important role in early embryonic development during the cleavage stage as a maternal effect gene.

*Literature published using this strain should indicate: Dppa3-IRES-Cre mice (Cat. NO. NM-KI-00040) were purchased from Shanghai Model Organisms Center, Inc..

Validation Data

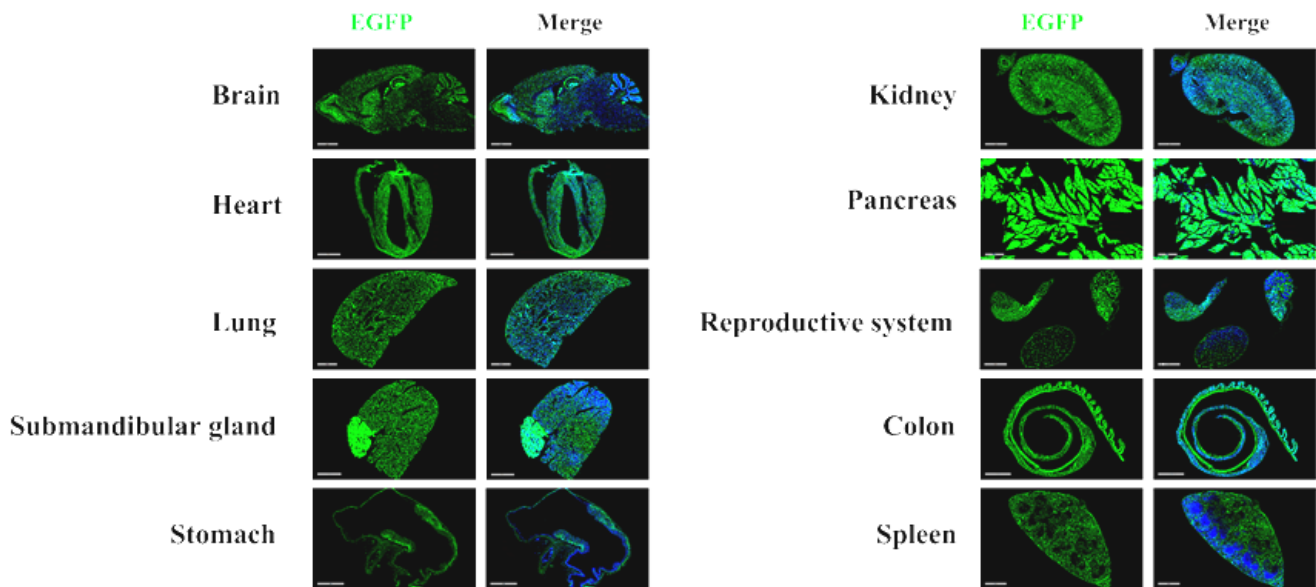


Fig. 1 Detection of ZsGreen(green) in various tissues of *Dppa3Cre/+; Rosa26ZsGreen/+* mice. ZsGreen expression can be detected in the brain, heart, lung, submandibular gland, salivary gland, stomach, kidney, pancreas, testis, epididymis, colon and spleen of *Dppa3Cre/+; Rosa26ZsGreen/+* mouse. (For more detailed information please contact our technical advisor.)

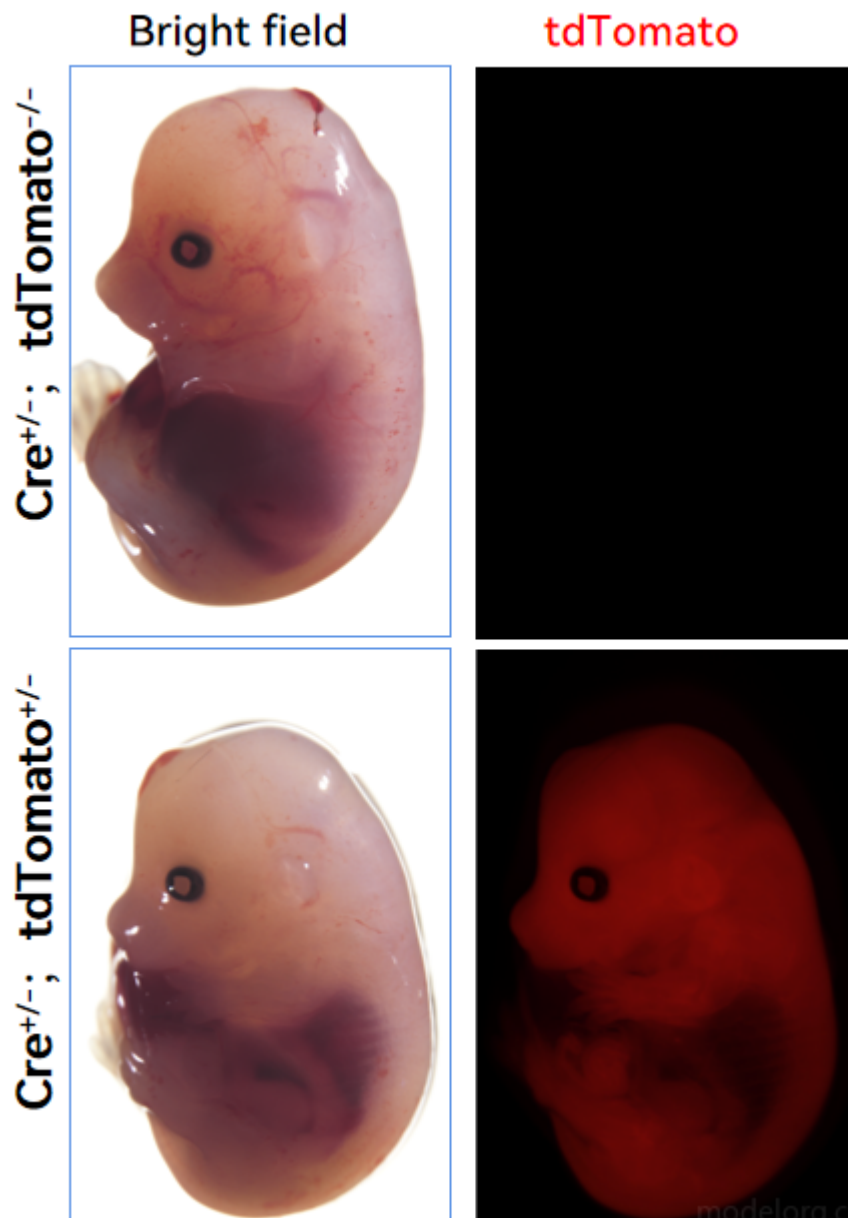


Fig. 2 Cre-mediated recombination in the E14.5 $Dppa3^{Cre/+}; Rosa26^{tdTomato/+}$ mouse embryos.

Publications

[Single-cell transcriptomics identifies potential cells of origin of MYC rhabdoid tumors](#)

References: Nature Communications