

# Epcam-2A-CreERT2

<b>Nomenclature</b>	C57BL/6Smoc- <i>Epcam</i> <sup>em1(2A-CreERT2)Smoc</sup>
<b>Cat. NO.</b>	NM-KI-00084
<b>Strain State</b>	Embryo cryopreservation

## Gene Summary

<b>Gene Symbol</b> Epcam	<b>Synonyms</b>	EGP; Ly74; gp40; CD326; EGP-2; TROP1; Egp314; Ep-CAM; EpCAM1; Tacsd1; GA733-2; Tacstd1
	<b>NCBI ID</b>	<a href="#">17075</a>
	<b>MGI ID</b>	<a href="#">106653</a>
	<b>Ensembl ID</b>	<a href="#">ENSMUSG00000045394</a>
	<b>Human Ortholog</b>	EPCAM

## Model Description

An 2A-CreERT2 co-expression cassette is inserted before 3'UTR region of Epcam gene .

\*Literature published using this strain should indicate: Epcam-2A-CreERT2 mice (Cat. NO. NM-KI-00084) were purchased from Shanghai Model Organisms Center, Inc..

## Validation Data

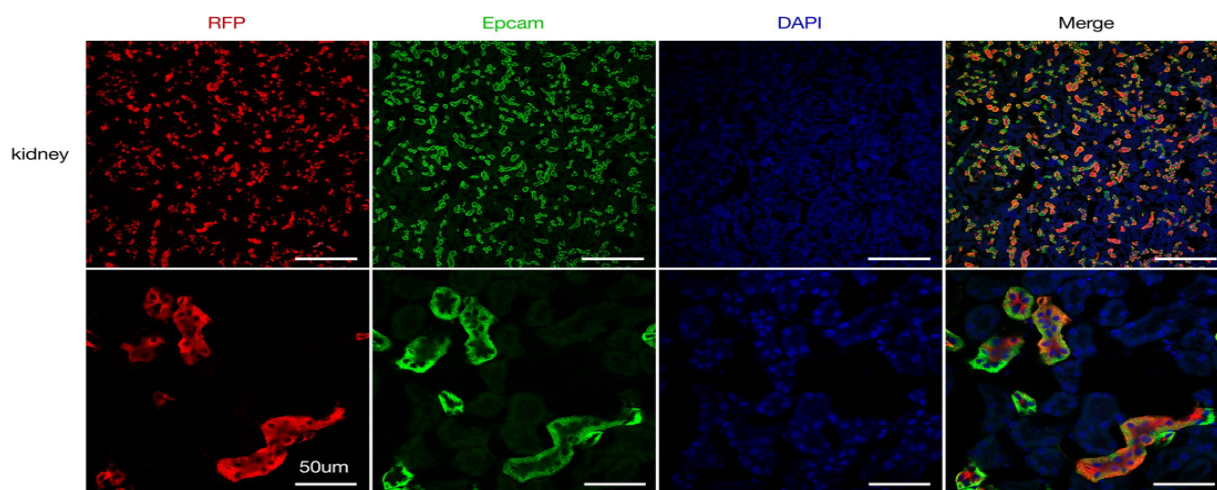


Fig1 CreERT2-mediated recombination in kidney cells of Epcam CreERT2+/-;R26 tdTomato+/- mice. Detection of tdTomato epifluorescence (red) and co-immunostaining for Epcam (green) in kidney cells of Epcam CreERT2+/- ;R26 tdTomato+/- mice.

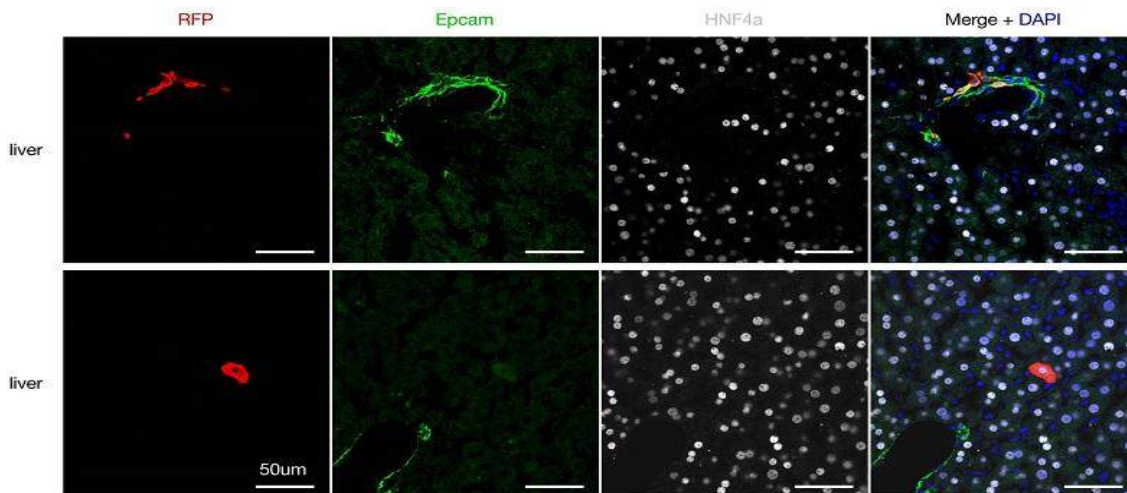


Fig2 CreERT2-mediated recombination in liver of Epcam-CreERT2+/-;R26 tdTomato+/- mice.

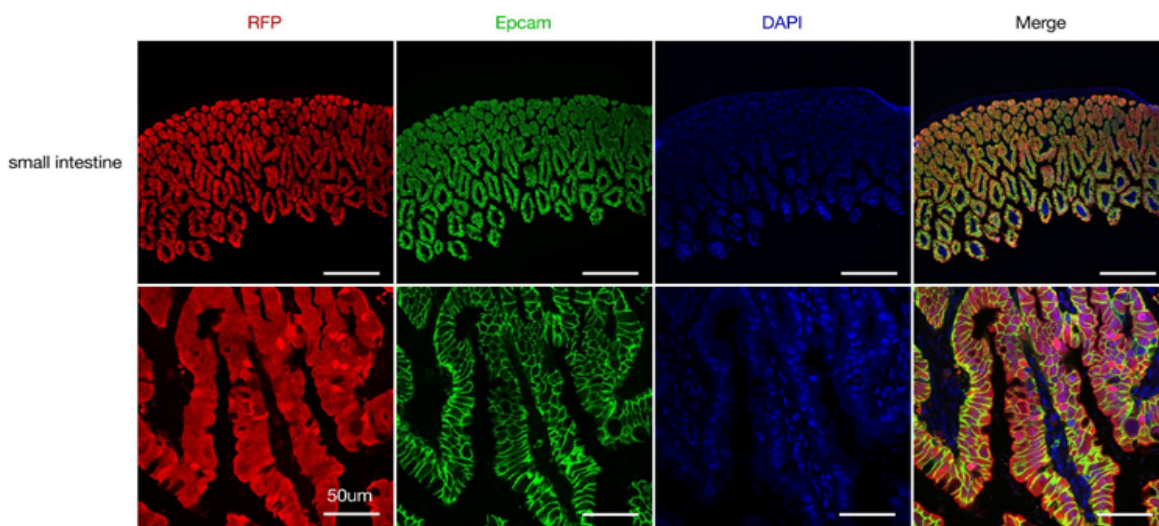


Fig3 CreERT2-mediated recombination in small Intestines of Epcam-CreERT2+/-;R26 tdTomato+/- mice.

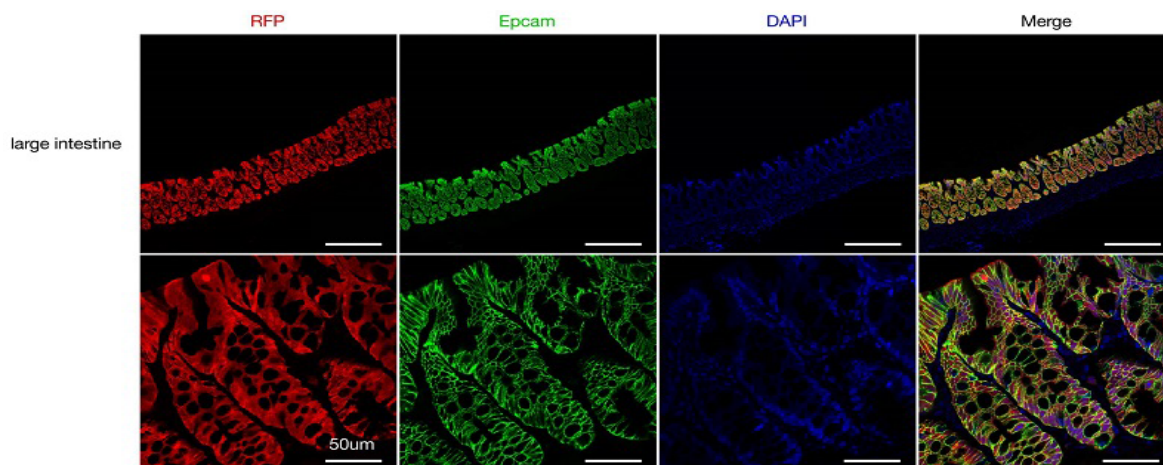


Fig4 CreERT2-mediated recombination in large Intestines of Epcam-CreERT2+/-;R26 tdTomato+/- mice.

---