

Muc2-2A-CreERT2-IRES-tdTomato

Nomenclature	C57BL/6Smoc- <i>Muc2</i> ^{em1(2A-CreERT2-tdTomato-Wpre-pA)Smoc}
Cat. NO.	NM-KI-200301
Strain State	Repository Live

Gene Summary

Gene Symbol	Synonyms	MCM, wnn, 2010015E03Rik
	NCBI ID	17831
	MGI ID	1339364
	Ensembl ID	ENSMUSG00000025515
	Human Ortholog	MUC2

Model Description

2A-CreERT2-tdTomato-Wpre-pA expression cassette was knocked into the *Muc2* gene stop codon site.

*Literature published using this strain should indicate: *Muc2*-2A-CreERT2-IRES-tdTomato mice (Cat. NO. NM-KI-200301) were purchased from Shanghai Model Organisms Center, Inc..

Validation Data

Large intestine

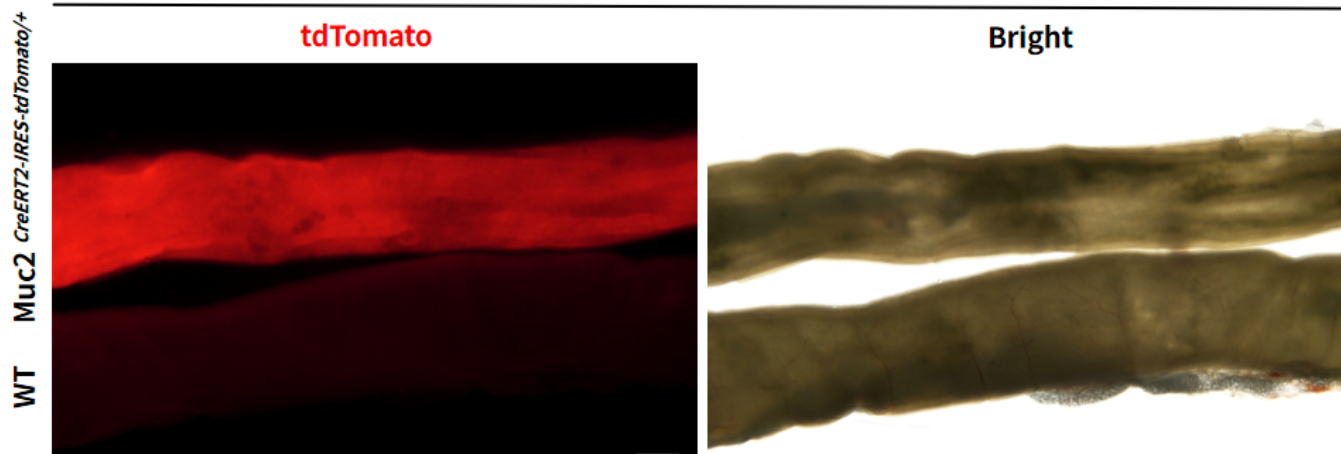


Fig 1. Active tdTomato expression was observed in the large intestine of *Muc2^{CreERT2-IRES-tdTomato/+}* mouse. WT, wild type as control.

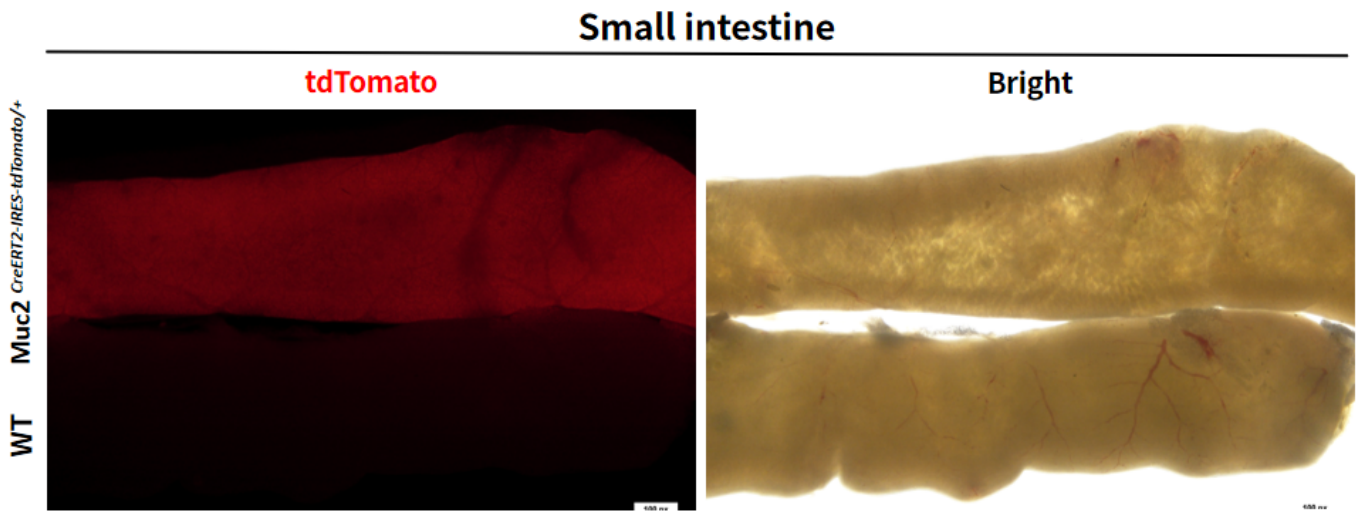


Fig 2. Active tdTomato expression was observed in the small intestine of *Muc2^{CreERT2-IRES-tdTomato/+}* mouse. WT, wild type as control.

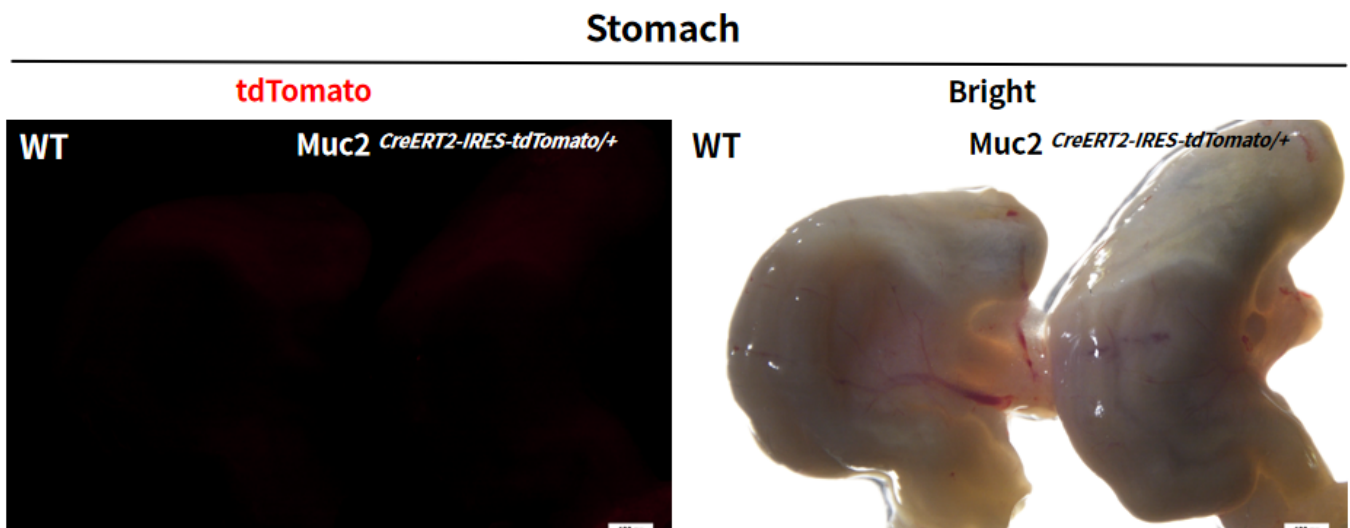


Fig 3. No obvious tdTomato signal was observed in the stomach of *Muc2^{CreERT2-IRES-tdTomato/+}* mouse. WT, wild type as control.

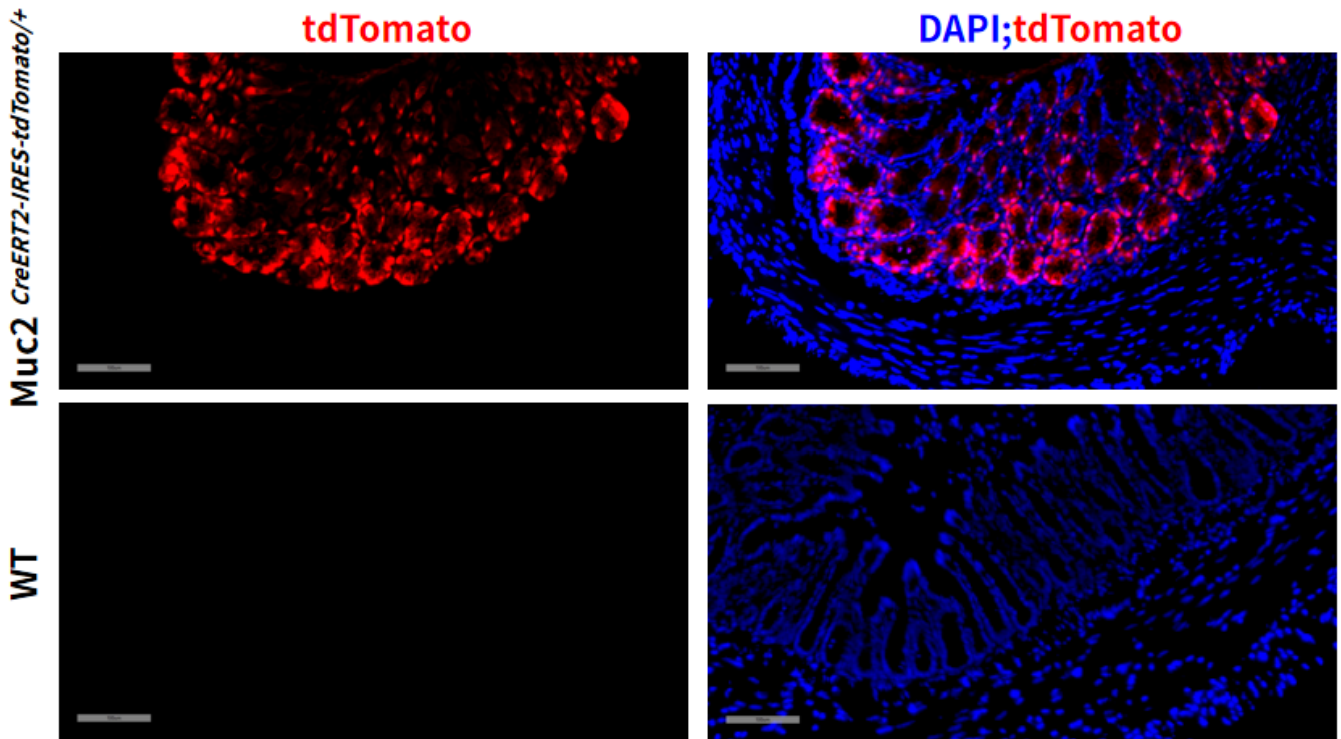


Fig 4. Active tdTomato signal was observed in the colon of *Muc2^{CreERT2-IRES-tdTomato/+}* mouse. WT, wild type as control.

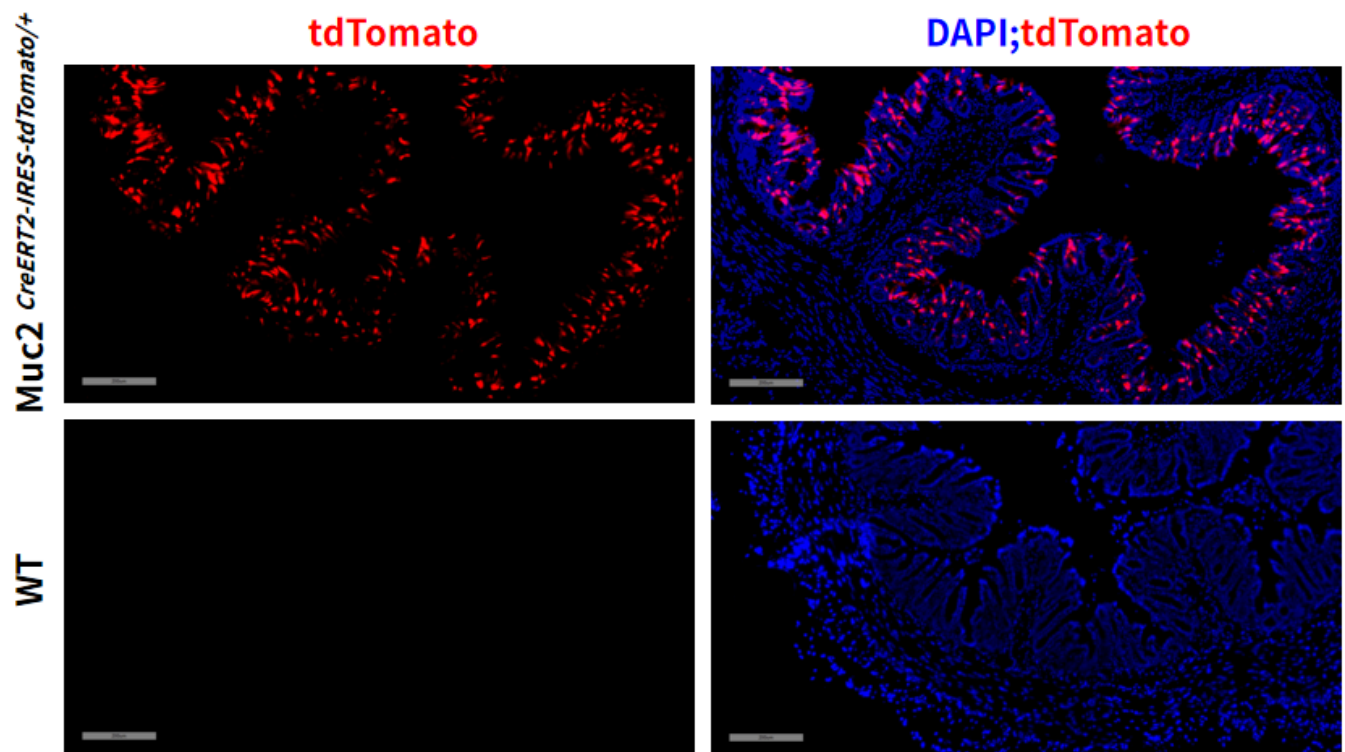


Fig 5. Active tdTomato signal was observed in the cecum of *Muc2^{CreERT2-IRES-tdTomato/+}* mouse. WT, wild type as control.

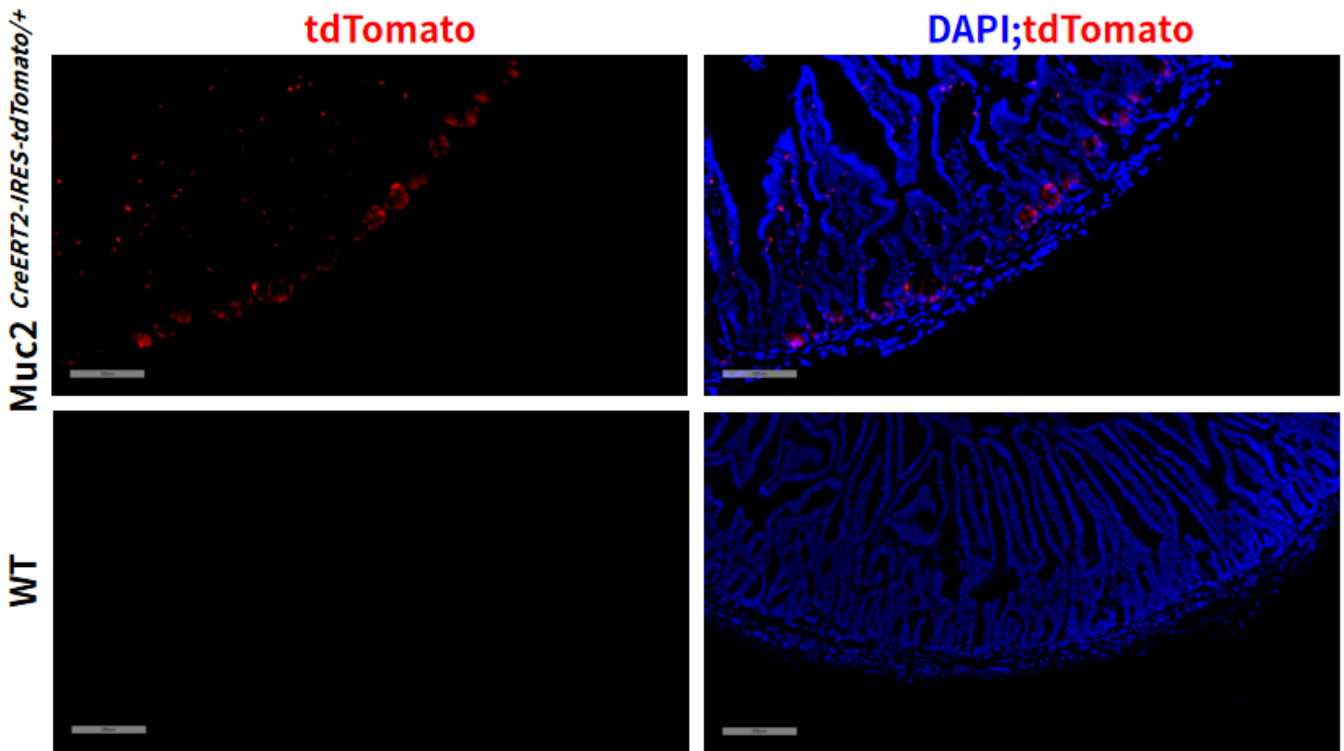


Fig 6. TdTomato signal was observed in the small intestine of *Muc2^{CreERT2-IRES-tdTomato/+}* mouse. WT, wild type as control.

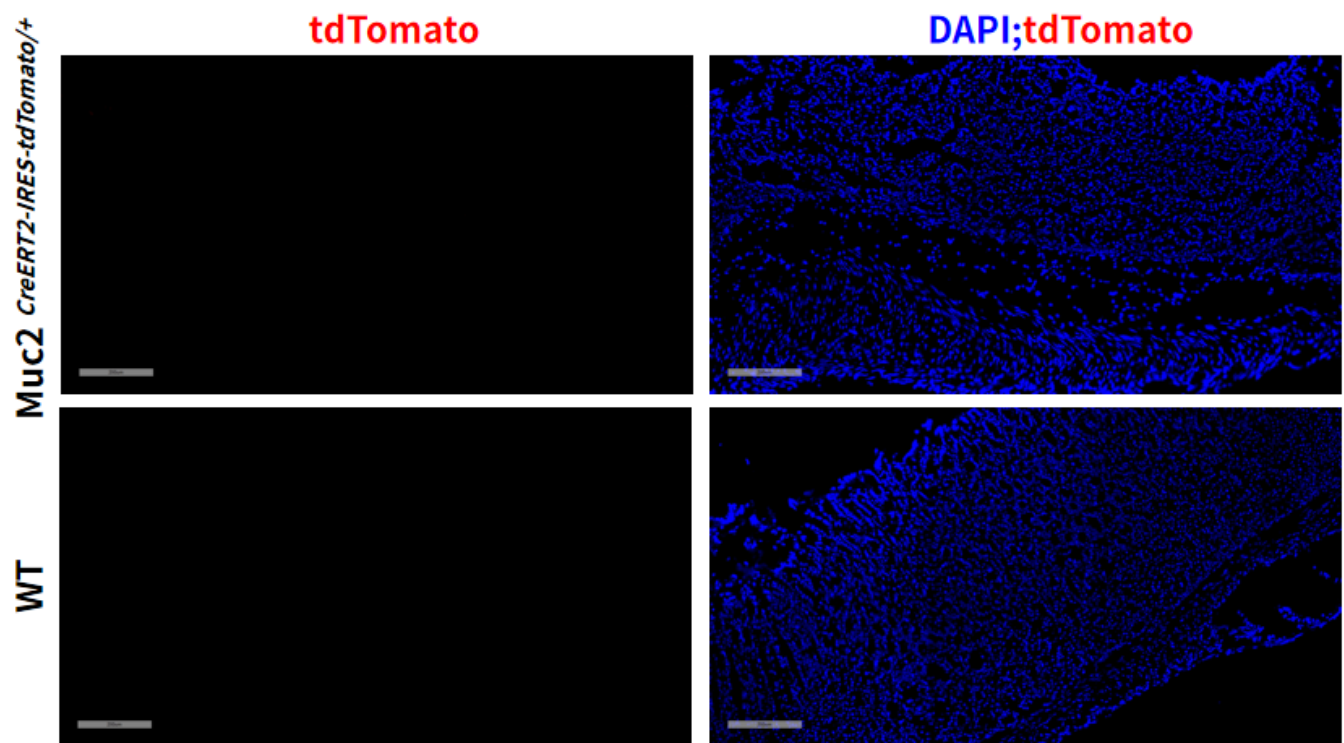


Fig 7. No obvious *tdTomato* signal was observed in the stomach of *Muc2^{CreERT2-IRES-tdTomato/+}* mouse. WT, wild type as control.

