

Nmu-2A-Cre

Nomenclature	C57BL/6Smoc- <i>Nmu</i> ^{em1(2A-Cre-WPRE-polyA)Smoc}
Cat. NO.	NM-KI-200298
Strain State	Repository Live

Gene Summary

Gene Symbol Nmu	Synonyms	-
	NCBI ID	56183
	MGI ID	1860476
	Ensembl ID	ENSMUSG00000029236
	Human Ortholog	NMU

Model Description

2A-Cre-WPRE-polyA expression cassette was knocked into the Nmu gene stop codon site. Nmu gene encodes a member of the neuromedin family of neuropeptides. The encoded protein plays a role in energy homeostasis and body temperature regulation. And the protein is homologous with human NMU, which is linked to obesity.

Research Application: Cre recombinase tool; Neuroscience

*Literature published using this strain should indicate: Nmu-2A-Cre mice (Cat. NO. NM-KI-200298) were purchased from Shanghai Model Organisms Center, Inc..

Validation Data

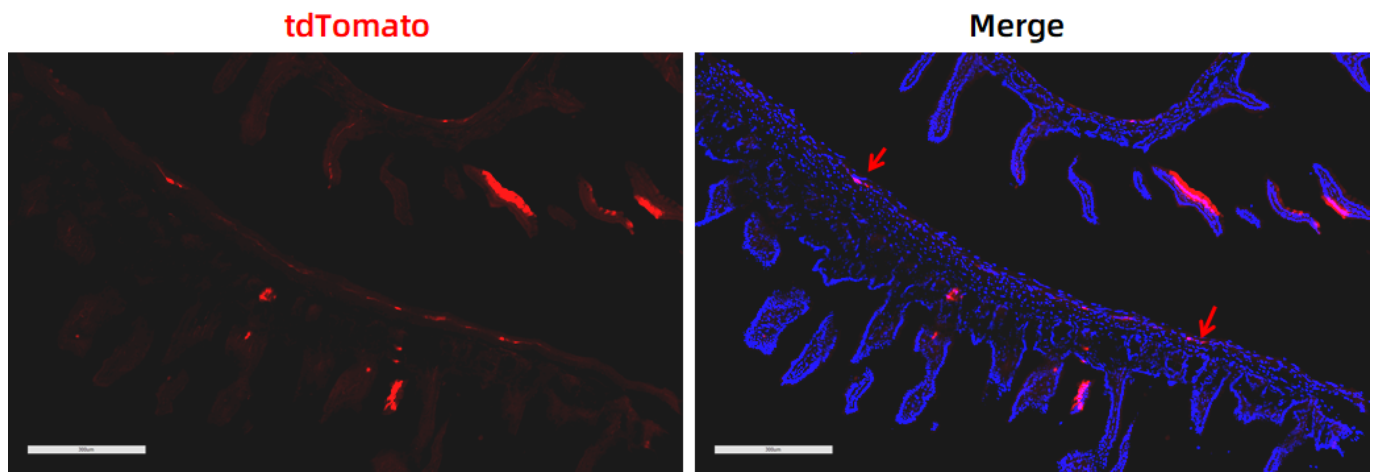


Fig. 1 Cre-mediated recombination in the intestine of $Nmu^{Cre/+}; Rosa26^{tdTomato/+}$ mouse. TdTomato(red) expression can be detected in the submucosal plexus (red arrows) of $Nmu^{Cre/+}; Rosa26^{tdTomato/+}$ mouse.

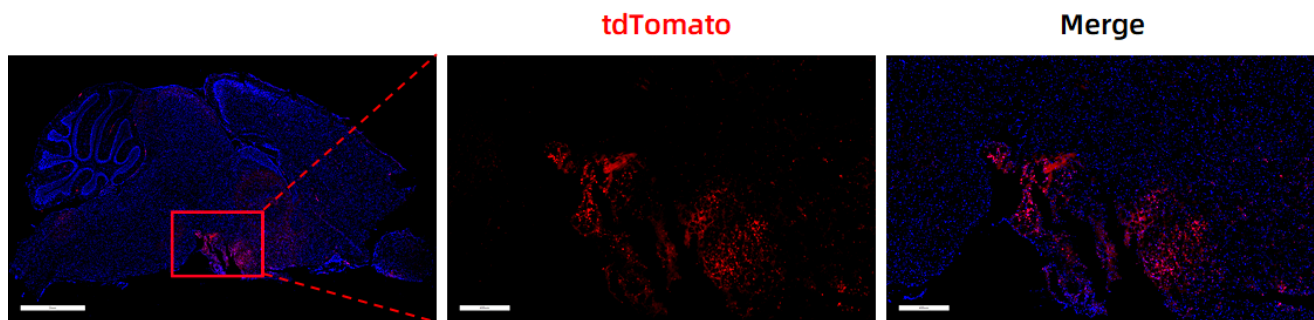


Fig. 2 Cre-mediated recombination in the intestine of $Nmu^{Cre/+}; Rosa26^{tdTomato/+}$ mouse. TdTomato(red) expression can be detected in the substantia nigra pars reticulata(SNR) of $Nmu^{Cre/+}; Rosa26^{tdTomato/+}$ mouse.

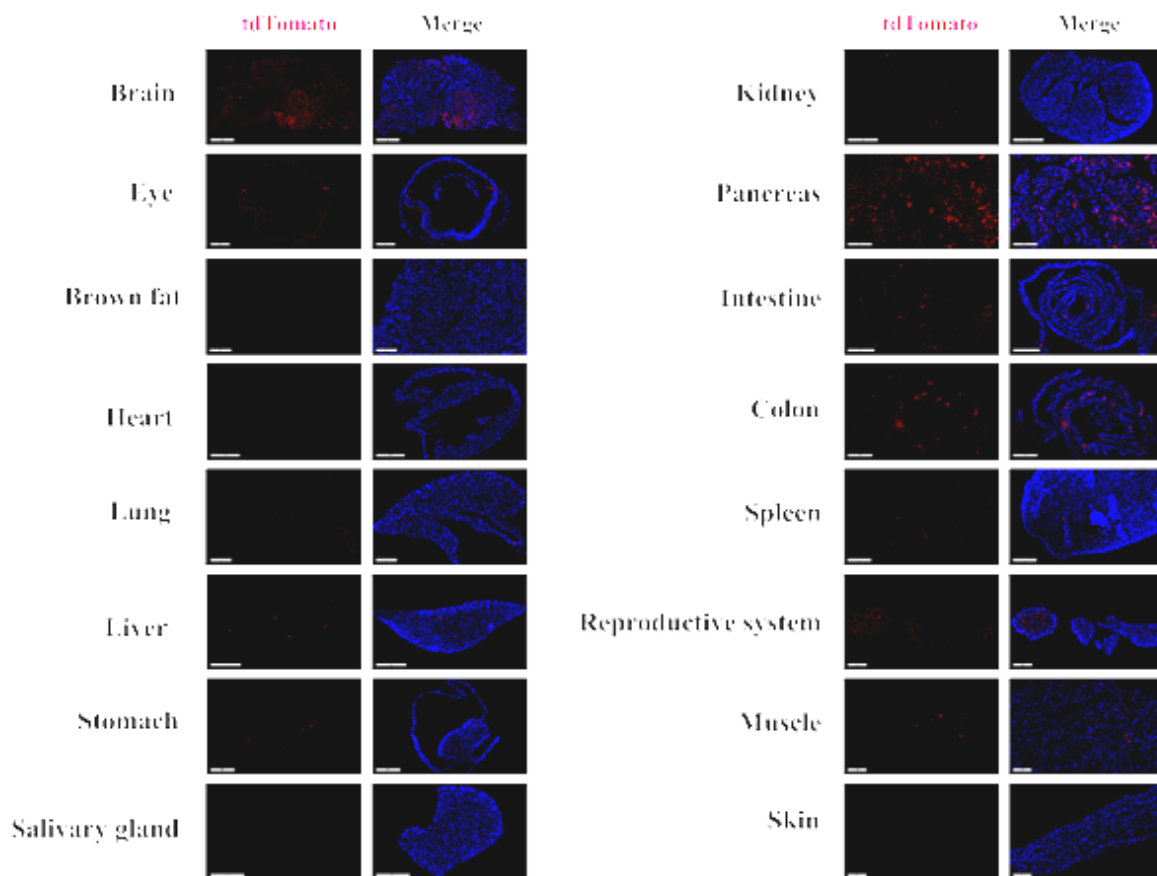


Fig. 3 Detection of tdTomato(red) in various tissues of $Nmu^{Cre/+}; Rosa26^{tdTomato/+}$ mice. Cre-mediated recombination can be detected in some cells of the heart, intestine, colon, pancreas, ovary, uterus, thymus, stomach. Tdtomato can also be detected in individual cells of the brown fat, kidney, lung, liver, muscle, salivary gland, skin and spleen. (For more detailed information please contact our technical advisor.)