

Oprm1-2A-Cre

Nomenclature	C57BL/6Smoc- <i>Oprm1</i> ^{em1(2A-Cre)Smoc}
Cat. NO.	NM-KI-200300
Strain State	Repository Live

Gene Summary

Gene Symbol Oprm1	Synonyms	mor; Oprm; muOR; MOP-R; MOR-1; M-OR-1; MOR-10
	NCBI ID	18390
	MGI ID	97441
	Ensembl ID	ENSMUSG00000000766
	Human Ortholog	OPRM1

Model Description

2A-Cre expression cassette was knocked into the *Oprm1* gene stop codon site via CRISPR/Cas9 mediated recombination.

*Literature published using this strain should indicate: *Oprm1*-2A-Cre mice (Cat. NO. NM-KI-200300) were purchased from Shanghai Model Organisms Center, Inc..

Validation Data

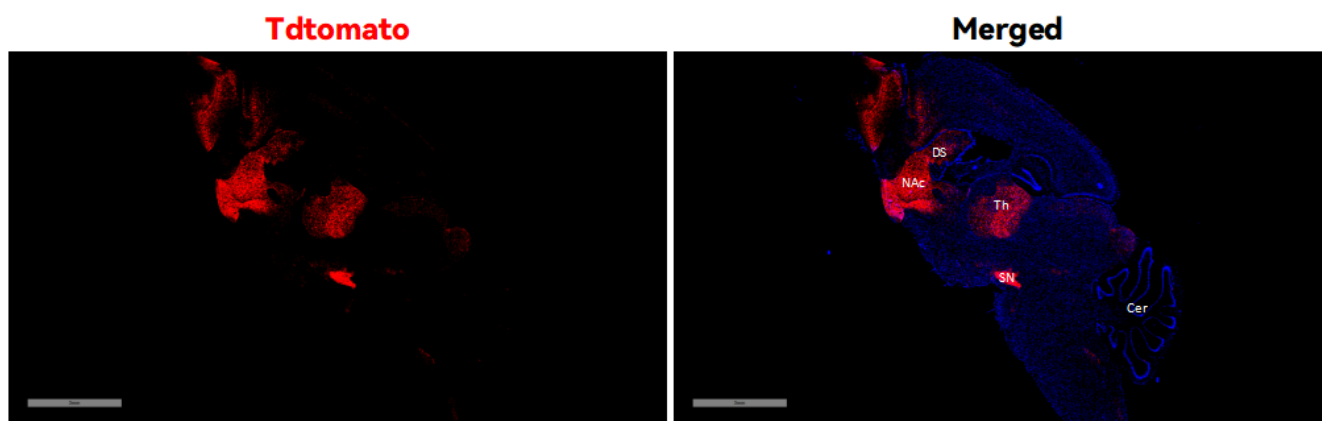


Fig1. Cre-mediated recombination in Brain of *Oprm1*^{Cre/+};*Rosa26*^{tdTomato/+} mouse.

Abbr. DS, dorsal striatum; NAc, nucleus accumbens; Th, thalamus; SN, substantia nigra; Cer, cerebellum;

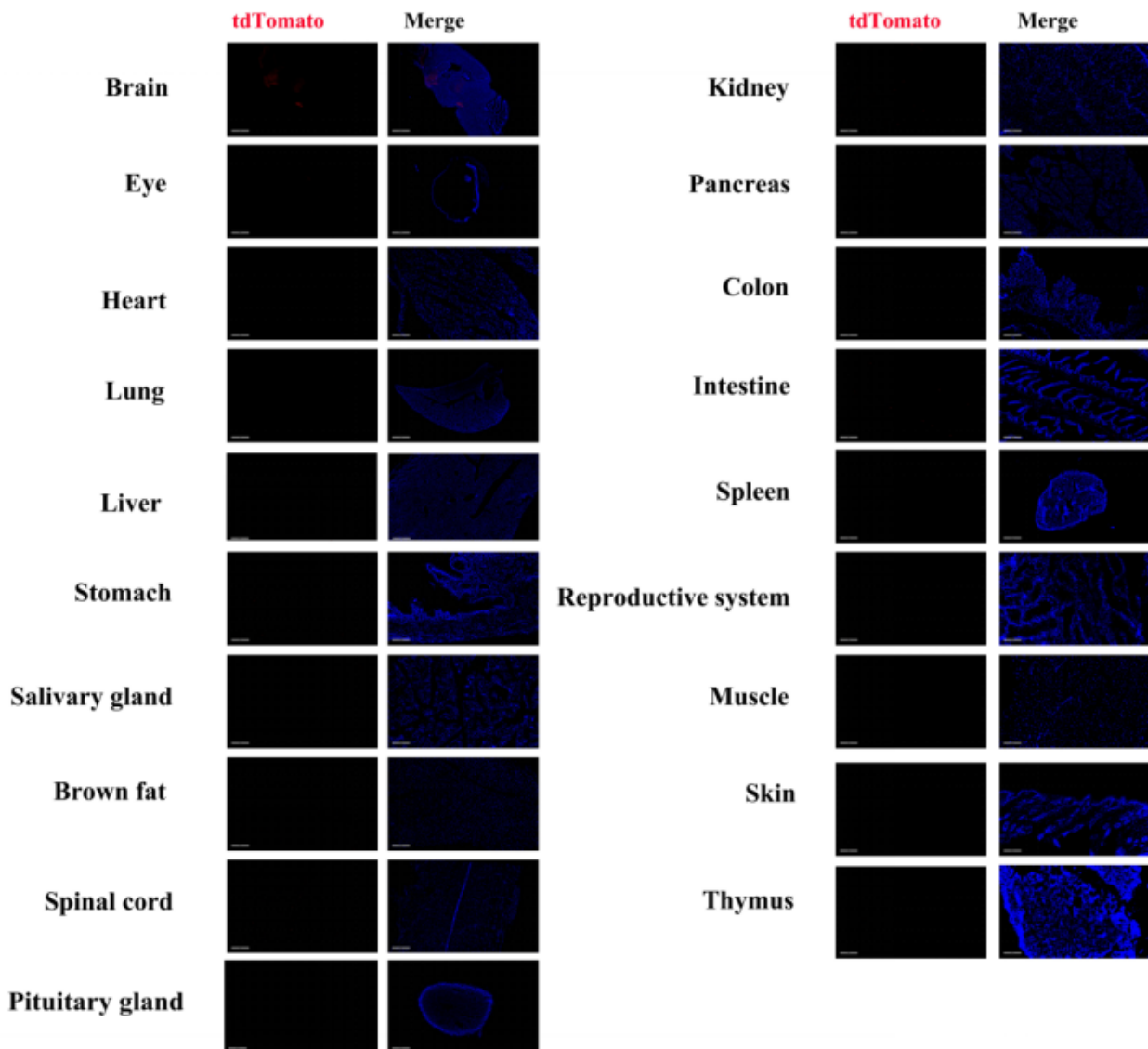


Fig2. Detection of tdTomato (red) in various tissues of *Oprm1^{Cre/+};Rosa26^{tdTomato/+}* mice. (For more detailed information please contact our technical advisor.)