

# Pkd2l1-2A-CreERT2

<b>Nomenclature</b>	C57BL/6Smoc- <i>Pkd2l1</i> <sup>em1(2A-CreERT2-Wpre-pA)Smoc</sup>
<b>Cat. NO.</b>	NM-KI-200310
<b>Strain State</b>	Sperm cryopreservation

## Gene Summary

<b>Gene Symbol</b> Pkd2l1	<b>Synonyms</b>	PCL; Pkd1; PKD2L; TRPP3; BC046386; B830002B15
	<b>NCBI ID</b>	<a href="#">329064</a>
	<b>MGI ID</b>	<a href="#">1352448</a>
	<b>Ensembl ID</b>	<a href="#">ENSMUSG00000037578</a>
	<b>Human Ortholog</b>	PKD2L1

## Model Description

2A-CreERT2-Wpre-pA expression cassette was knocked into the Pkd2l1 gene stop codon site.

\*Literature published using this strain should indicate: Pkd2l1-2A-CreERT2 mice (Cat. NO. NM-KI-200310) were purchased from Shanghai Model Organisms Center, Inc..

## Validation Data

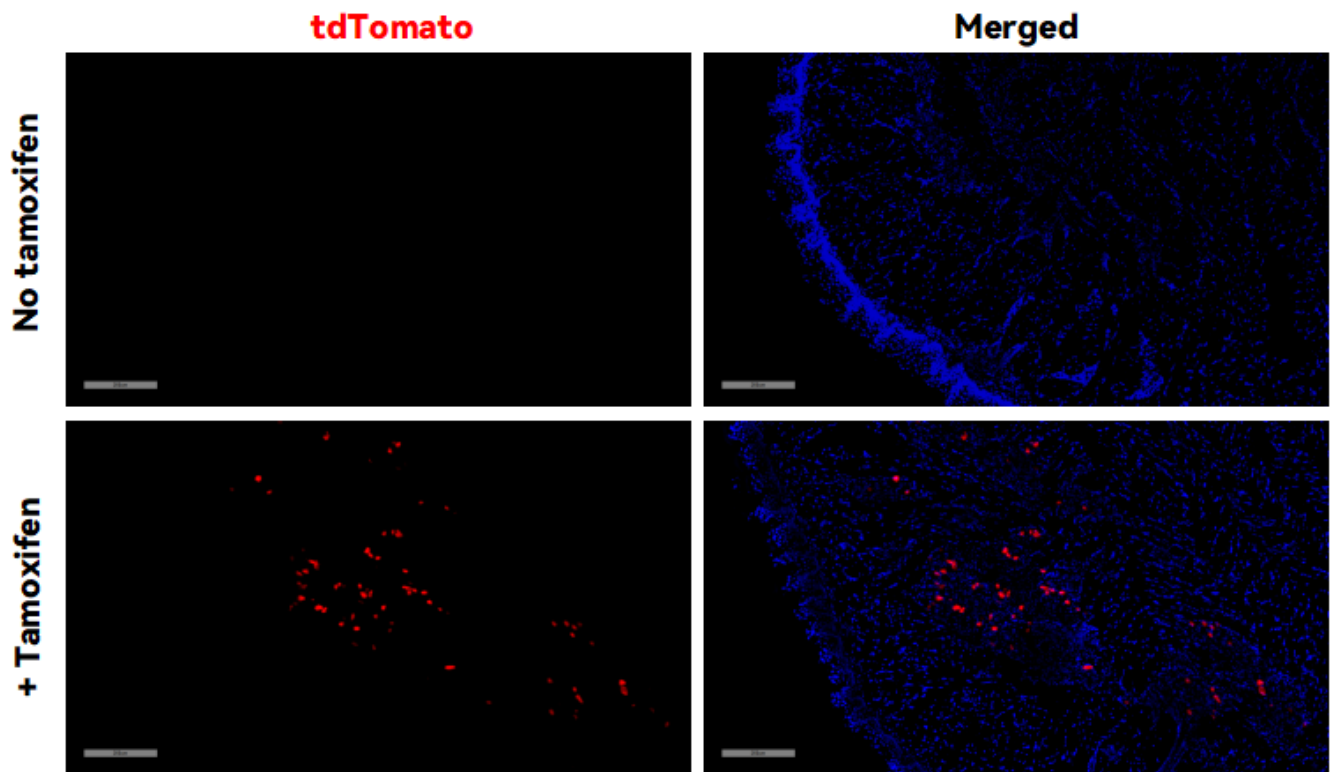


Fig1. CreERT2-mediated recombination in tongue of  $Pkd2l1^{CreERT2/+};Rosa26^{tdTomato/+}$  mouse.

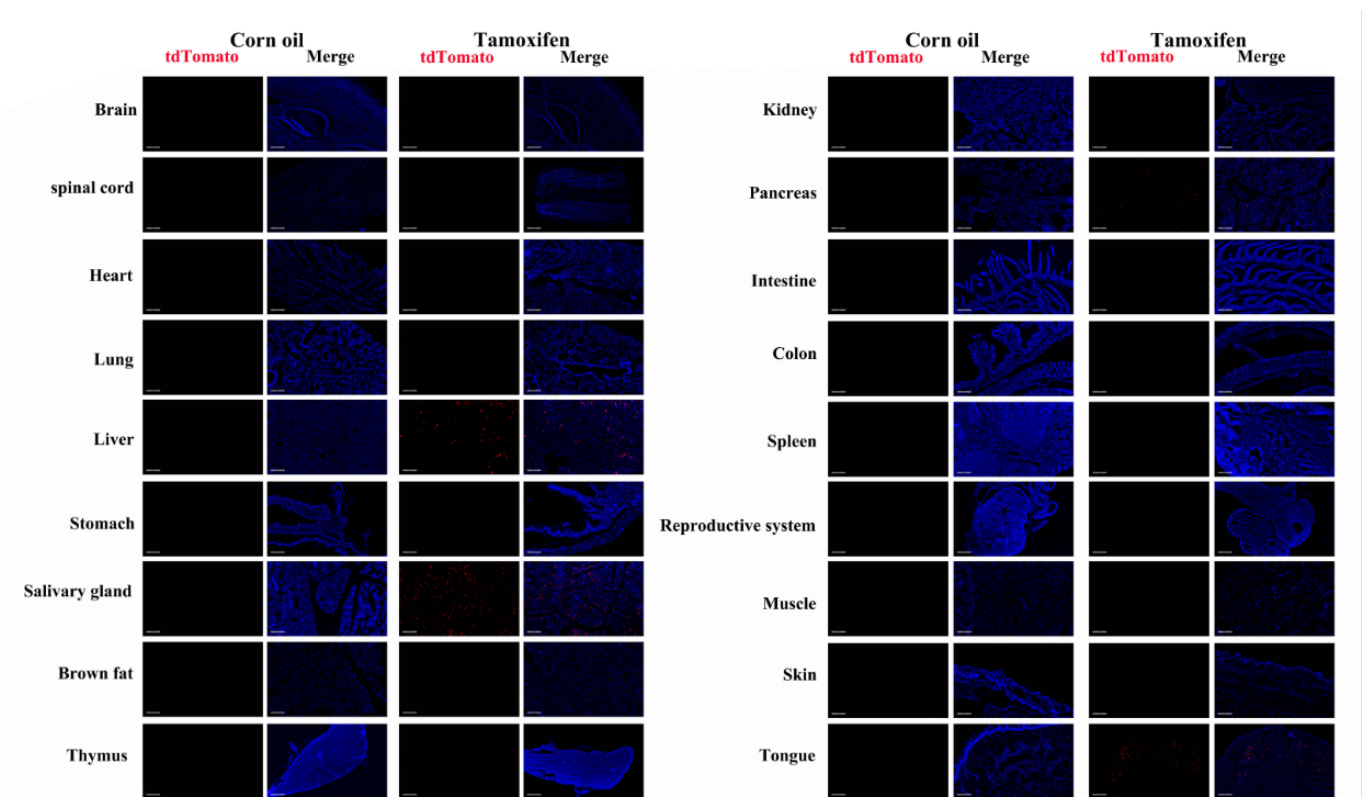


Fig2. Detection of tdTomato(red) in various tissues of  $Pkd2l1^{CreERT2/+};Rosa26^{tdTomato/+}$  mice. (For more detailed information please contact our technical advisor.)

