

# MC38-hB7H3

## Strain Information

Cat. NO.	NM-S13-TM06
Cell Line	MC38- <i>Cd276</i> <sup>em1(hB7H3)/Smoc</sup>
Strain State	Validation of tumorigenic capacity completed
Model Description	The endogenous mouse <i>Cd276</i> (also known as B7h3) gene was replaced by human B7H3 gene.

\*Literature published using this strain should indicate: MC38-hB7H3 cell line (Cat. NO. NM-S13-TM06) was purchased from Shanghai Model Organisms Center, Inc..

## Validation Data

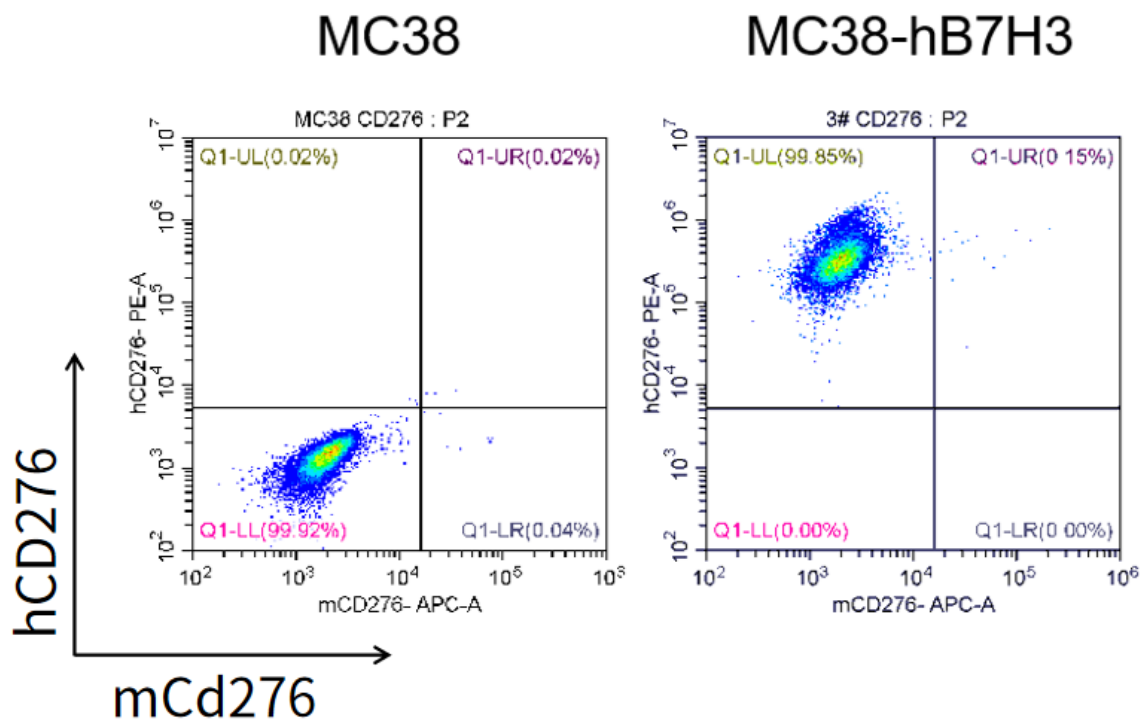


Figure 1. hB7H3 expression in wild-type MC38 and MC38-hB7H3 cell lines.

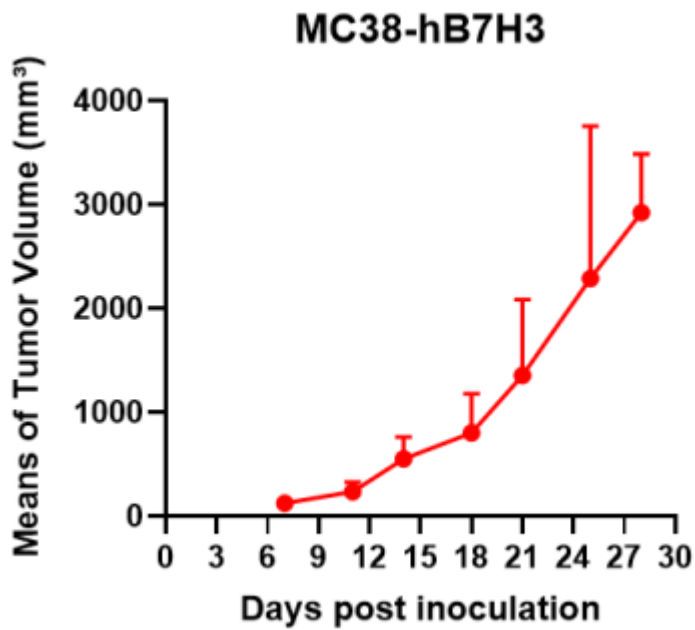


Figure 2. Tumor growth curve of MC38-hB7H3 syngeneic model (n=5).

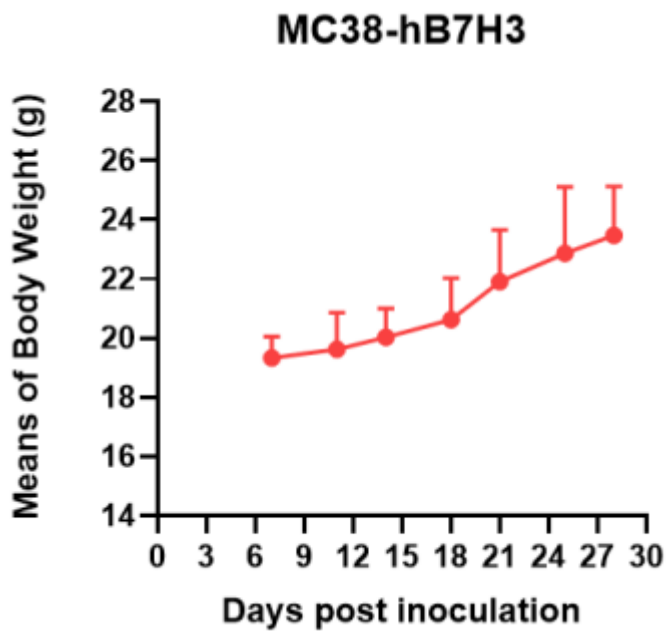


Figure 3. Body weight change of MC38-hB7H3 syngeneic model (n=5).

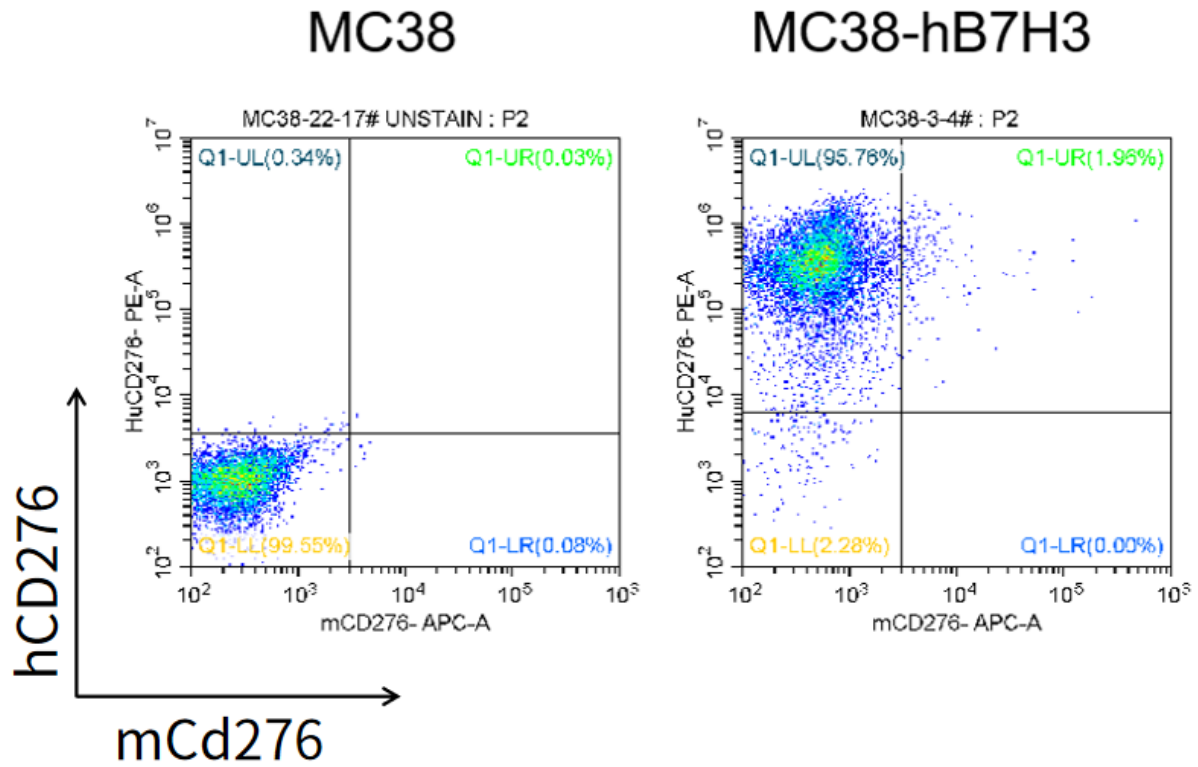


Figure 4. The expression of hB7H3 in humanized modified tumors by FACS.