

hCD2

Nomenclature	C57BL/6Smoc- <i>Cd2</i> ^{tm1(hCD2)Smoc}
Cat. NO.	NM-HU-204986
Strain State	Embryo cryopreservation

Gene Summary

Gene Symbol Cd2	Synonyms	Ly37; LFA-2; Ly-37
	NCBI ID	12481
	MGI ID	88320
	Ensembl ID	ENSMUSG00000027863
	Human Ortholog	CD2

Model Description

The endogenous mice Cd2 gene was replaced by human CD2 gene.

*Literature published using this strain should indicate: hCD2 mice (Cat. NO. NM-HU-204986) were purchased from Shanghai Model Organisms Center, Inc..

Validation Data

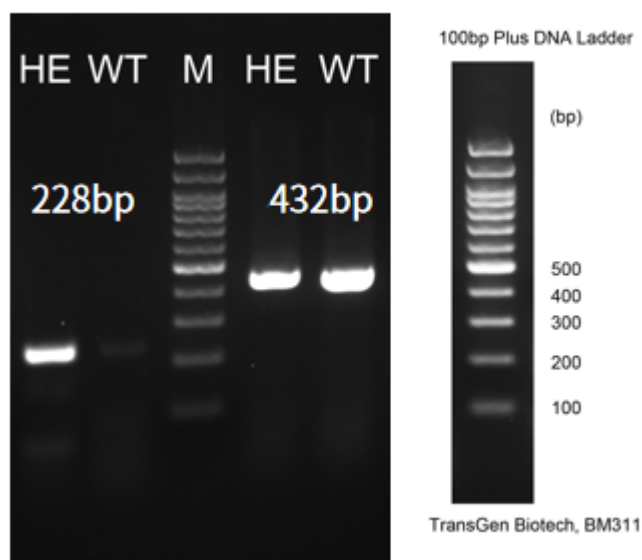


Fig1. Detection of CD2 expression in thymus and spleen by RT-PCR.

Wild type: only one band at 432 bp with primers F1/R1(mCd2);

Heterozygous: one band at 432 bp with primers F1/R1(mCd2) and one band at 228 bp with primers F2/R2(hCD2).

Abbr. M, DNA marker; HE, heterozygous; WT, wild type.

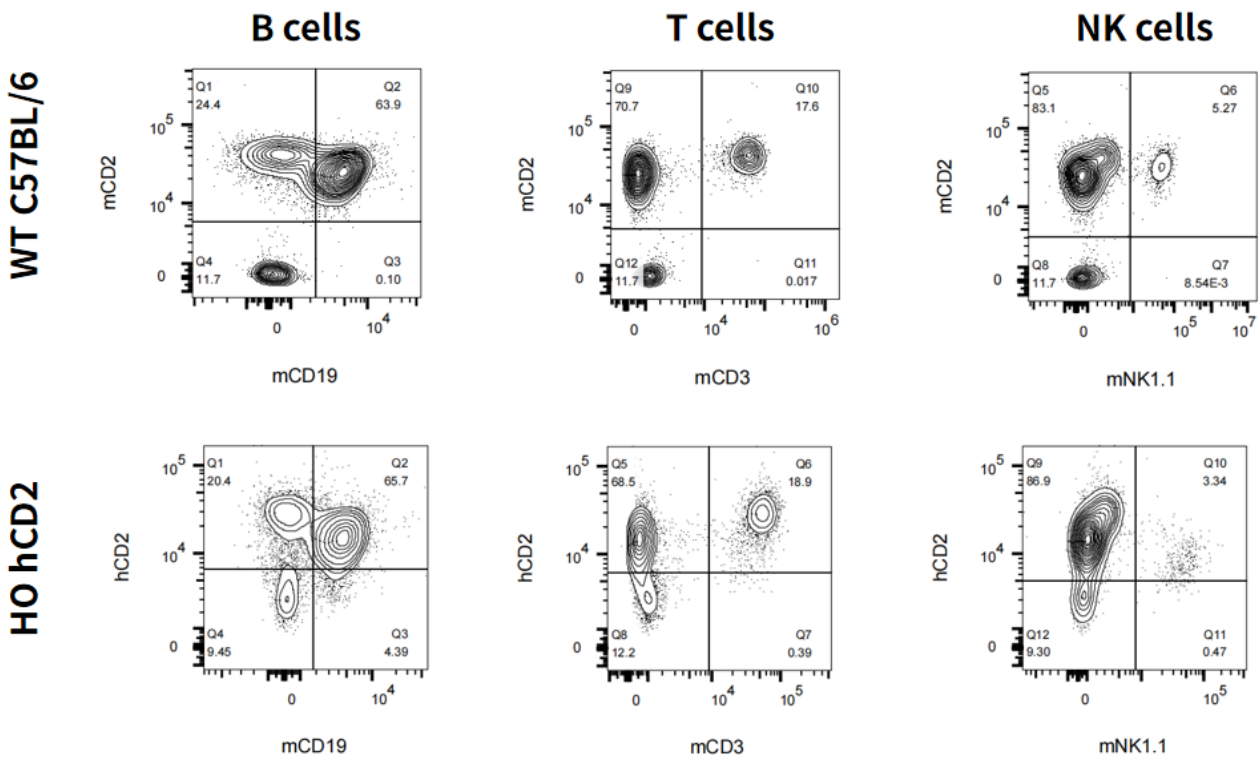


Fig2. Detection of hCD2 expression in Blood in hCD2 KI mice.

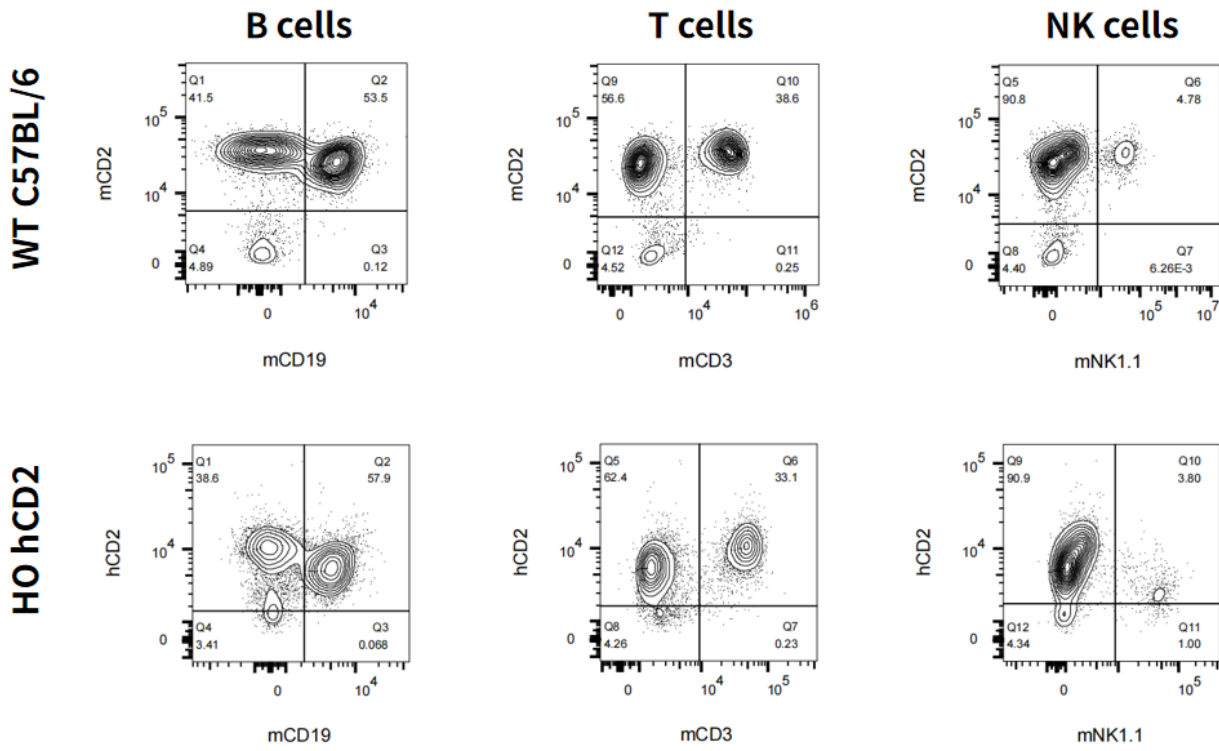


Fig3. Detection of hCD2 expression in Spleen in hCD2 KI mice.