

# hHLA-A11

<b>Nomenclature</b>	C57BL/6Smoc- <i>H2-K1</i> <sup>tm1(hHLA-A11)Smoc</sup>
<b>Cat. NO.</b>	NM-HU-204987
<b>Strain State</b>	Repository Live

## Gene Summary

<b>Gene Symbol</b> H2-K1	<b>Synonyms</b>	K-f; H-2K; H2-K; H2-D1; H2-K_p; H-2K(d)
	<b>NCBI ID</b>	<a href="#">14972</a>
	<b>MGI ID</b>	<a href="#">95904</a>
	<b>Ensembl ID</b>	<a href="#">ENSMUSG00000061232</a>
	<b>Human Ortholog</b>	HLA-A, HLA-E, HLA-F

## Model Description

The endogenous mice H2-K1 gene was replaced by human HLA-A11 gene.

\*Literature published using this strain should indicate: hHLA-A11 mice (Cat. NO. NM-HU-204987) were purchased from Shanghai Model Organisms Center, Inc..

## Validation Data

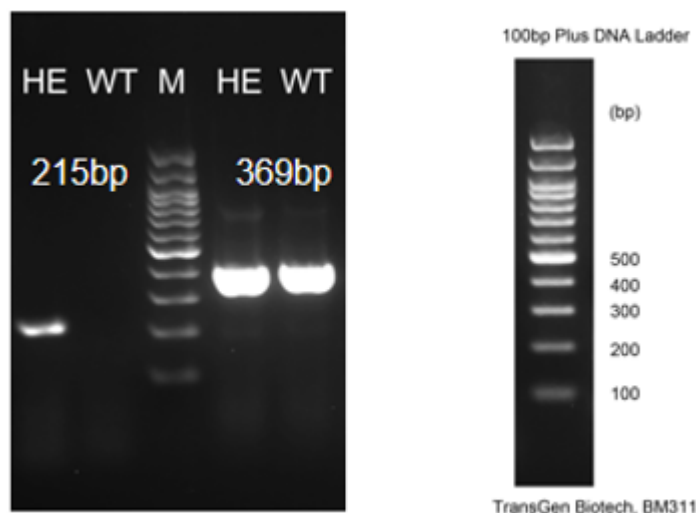


Fig1. Detection of HLA-A11 expression in liver and spleen by RT-PCR.

Wild type: only one band at 369 bp with primers F1/R1(mH2-k1);

Heterozygous: one band at 369 bp with primers F1/R1(mH2-k1) and one band at 215 bp with primers F2/R2(hHLA-A11).

Abbr. M, DNA marker; HE, heterozygous; WT, wild type.

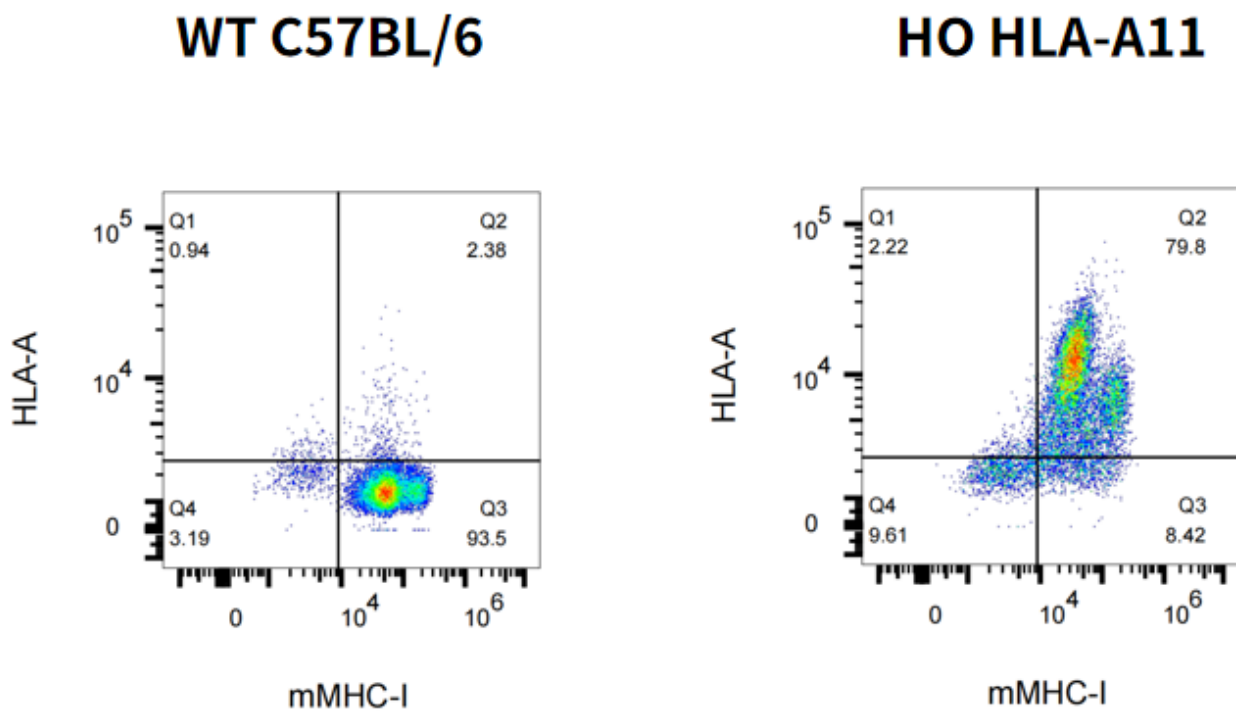


Fig2. Detection of HLA-A11 expression in blood in HLA-A11 KI mice.