

# Ly6g-2A-DTRGFP(BALB/c)

<b>Nomenclature</b>	BALB/cAnSmoc- <i>Ly6g</i> <sup>em(2A-DTRGFP)Smoc</sup>
<b>Cat. NO.</b>	NM-KI-204997
<b>Strain State</b>	Embryo cryopreservation

## Gene Summary

<b>Gene Symbol</b> Ly6g	<b>Synonyms</b>	Gr1; Gr-1; Ly-6G
	<b>NCBI ID</b>	<a href="#">546644</a>
	<b>MGI ID</b>	<a href="#">109440</a>
	<b>Ensembl ID</b>	<a href="#">ENSMUSG00000022582</a>
	<b>Human Ortholog</b>	LY6G

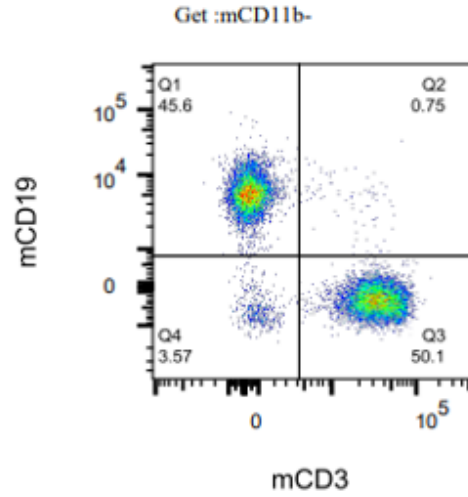
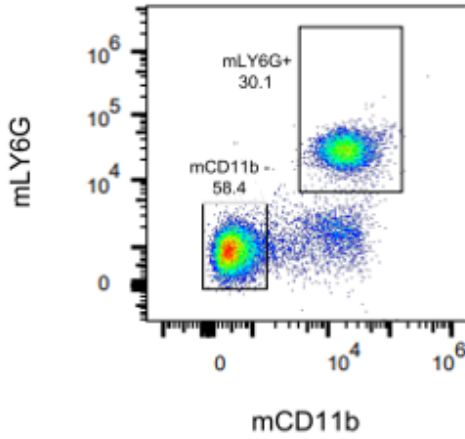
## Model Description

2A-DTRGFP expression cassette was knocked into the Ly6g gene .

\*Literature published using this strain should indicate: Ly6g-2A-DTRGFP(BALB/c) mice (Cat. NO. NM-KI-204997) were purchased from Shanghai Model Organisms Center, Inc..

## Validation Data

WT BALB/C



LY6G-2A-DTRGFP

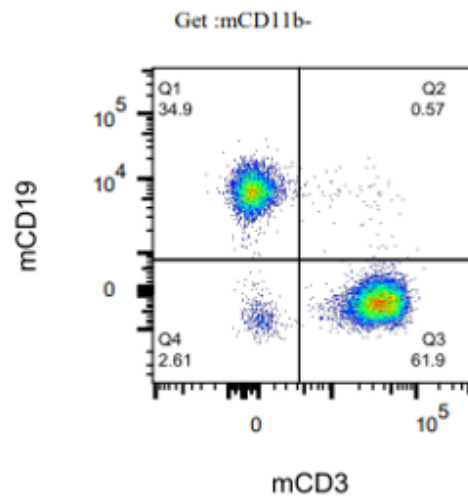
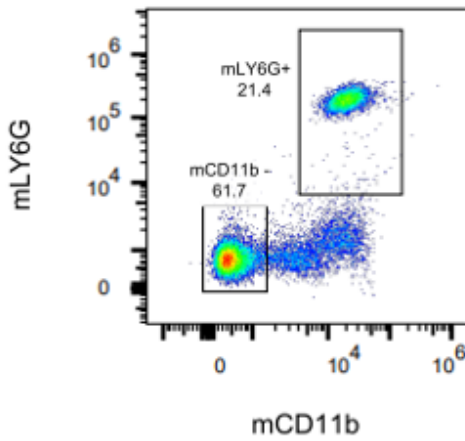
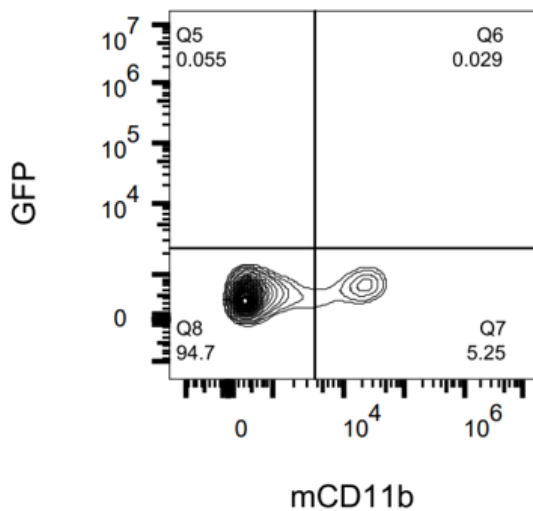


Fig1. Immune phenotyping in Blood in Ly6G-2A-DTRGFP KI mice(n=3, female, 3-week-old).

WT BALB/c



Ly6G-2A-DTRGFP

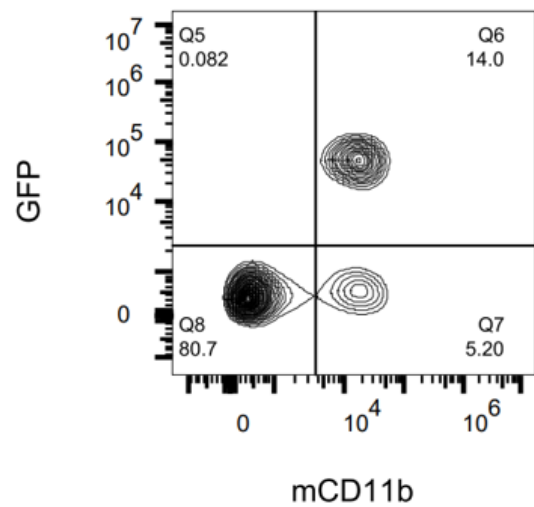


Fig2. Detection of GFP expression in Blood in Ly6g-2A-DTRGFP (BALB/c) mice(n=3, female, 3-week-old).

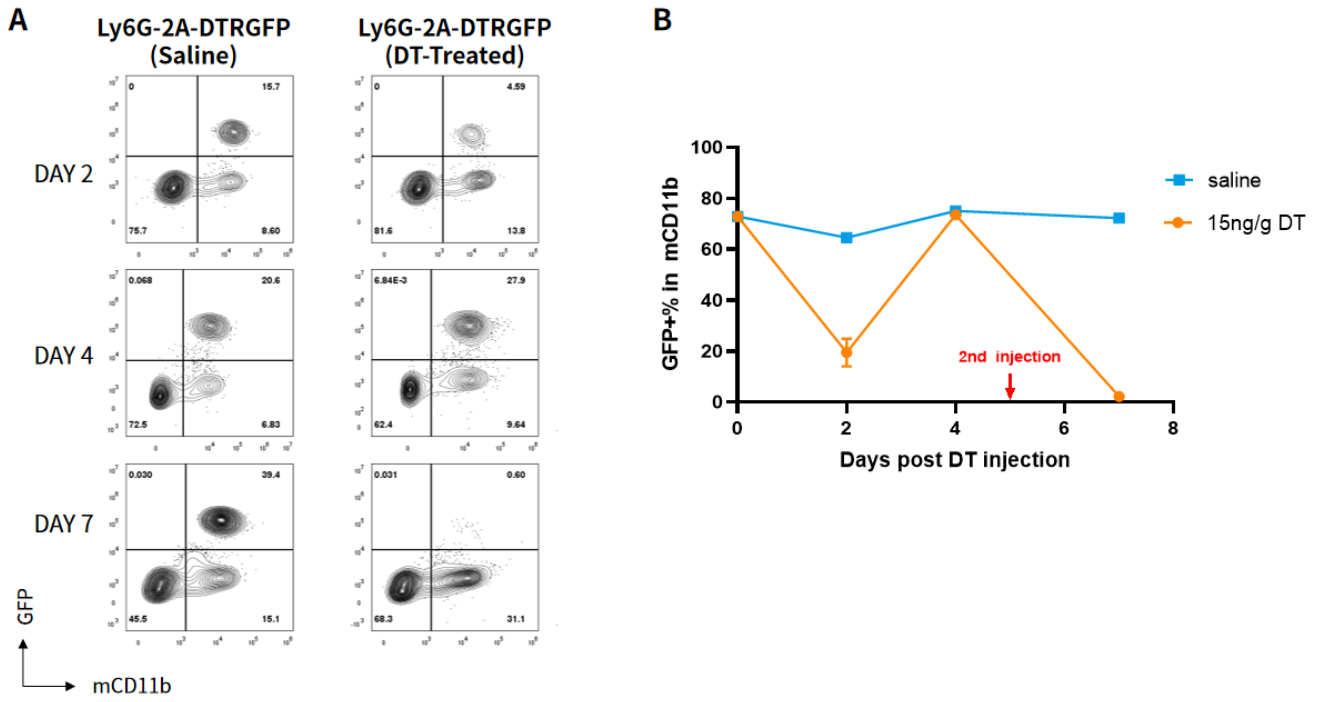


Fig3. Representative plots (A) and statistical charts (B) of Neutrophils frequency in Blood in DT-treated Ly6g-2A-DTRGFP(BALB/c) KI mice(n=3, female, 3-week-old).

Note.  $GFP+\% \text{ in } mCD11b = (GFP+mCD11b+) / mCD11b+$

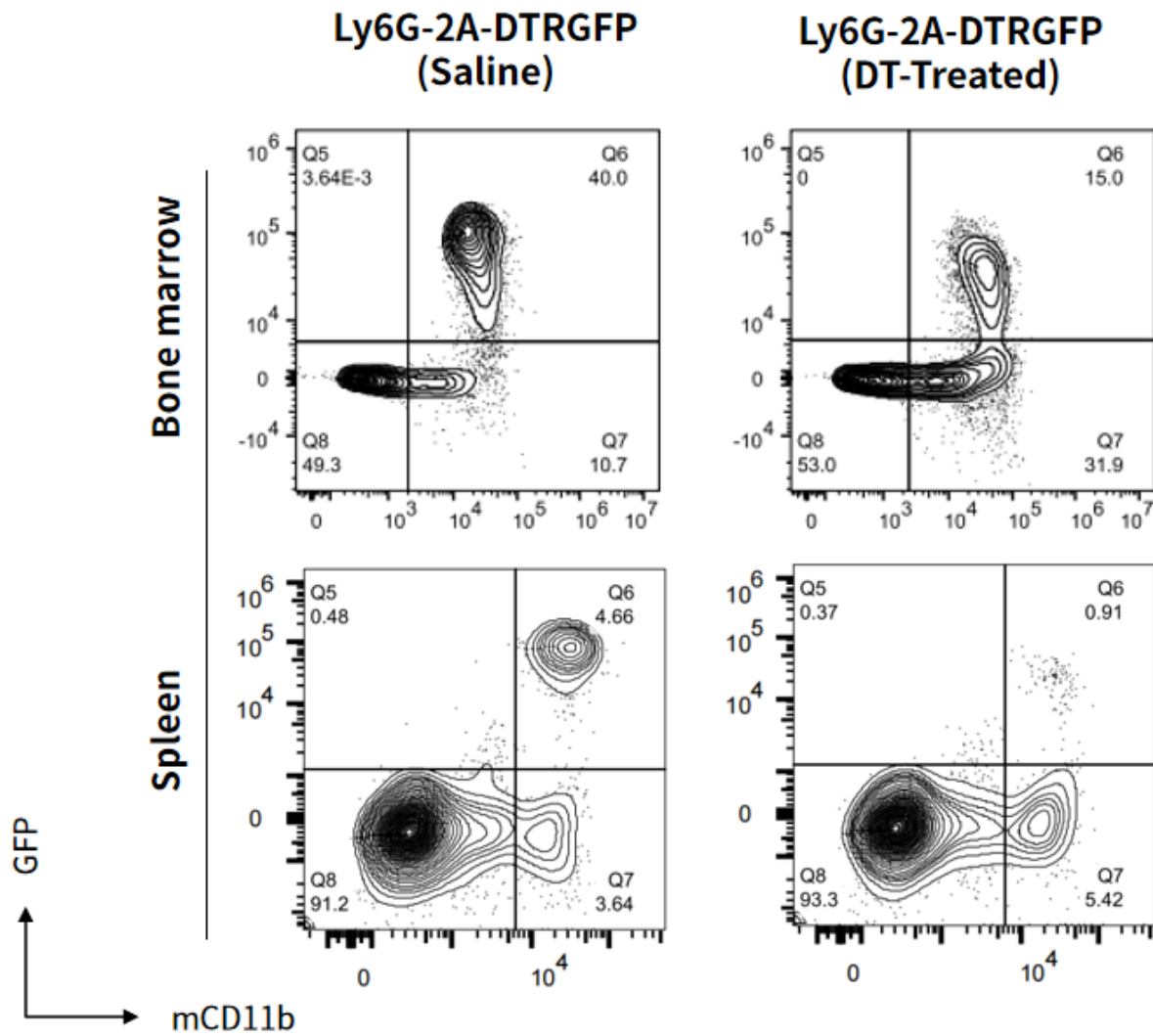


Fig4. Representative plots of Neutrophils frequency in spleen and bone marrow in Ly6G-2A-DTRGFP(BALB/c) KI mice(n=3, female, 3-week-old) after 7 days of DT administration.