

# R26-CAG-LSL-Kras\*G12C-IRES-Luc

<b>Nomenclature</b>	C57BL/6Smoc- <i>Gt(ROSA)26Sor</i> <sup>em1(CAG-FRT-LSL-Kras(G12C)-IRES-Luciferase-polyA)Smoc</sup>
<b>Cat. NO.</b>	NM-KI-200323
<b>Strain State</b>	Repository Live

## Gene Summary

<b>Gene Symbol</b> <b>Gt(ROSA)26Sor</b>	<b>Synonyms</b>	R26, ROSA26, AV258896, Gtrg eo26, Gtrosa26, Thumpd3as1
	<b>NCBI ID</b>	<a href="#">14910</a>
	<b>MGI ID</b>	<a href="#">104735</a>
	<b>Ensembl ID</b>	<a href="#">ENSMUSG00000086429</a>

## Model Description

A CAG-FRT-loxp-stop-loxp-Kras(G12C)-IRES-Luciferase-polyA expression cassette was knocked into the R26 locus.

\*Literature published using this strain should indicate: R26-CAG-LSL-Kras\*G12C-IRES-Luc mice (Cat. NO. NM-KI-200323) were purchased from Shanghai Model Organisms Center, Inc..

## Validation Data



**Wildtype**

**Kras(G12C)**

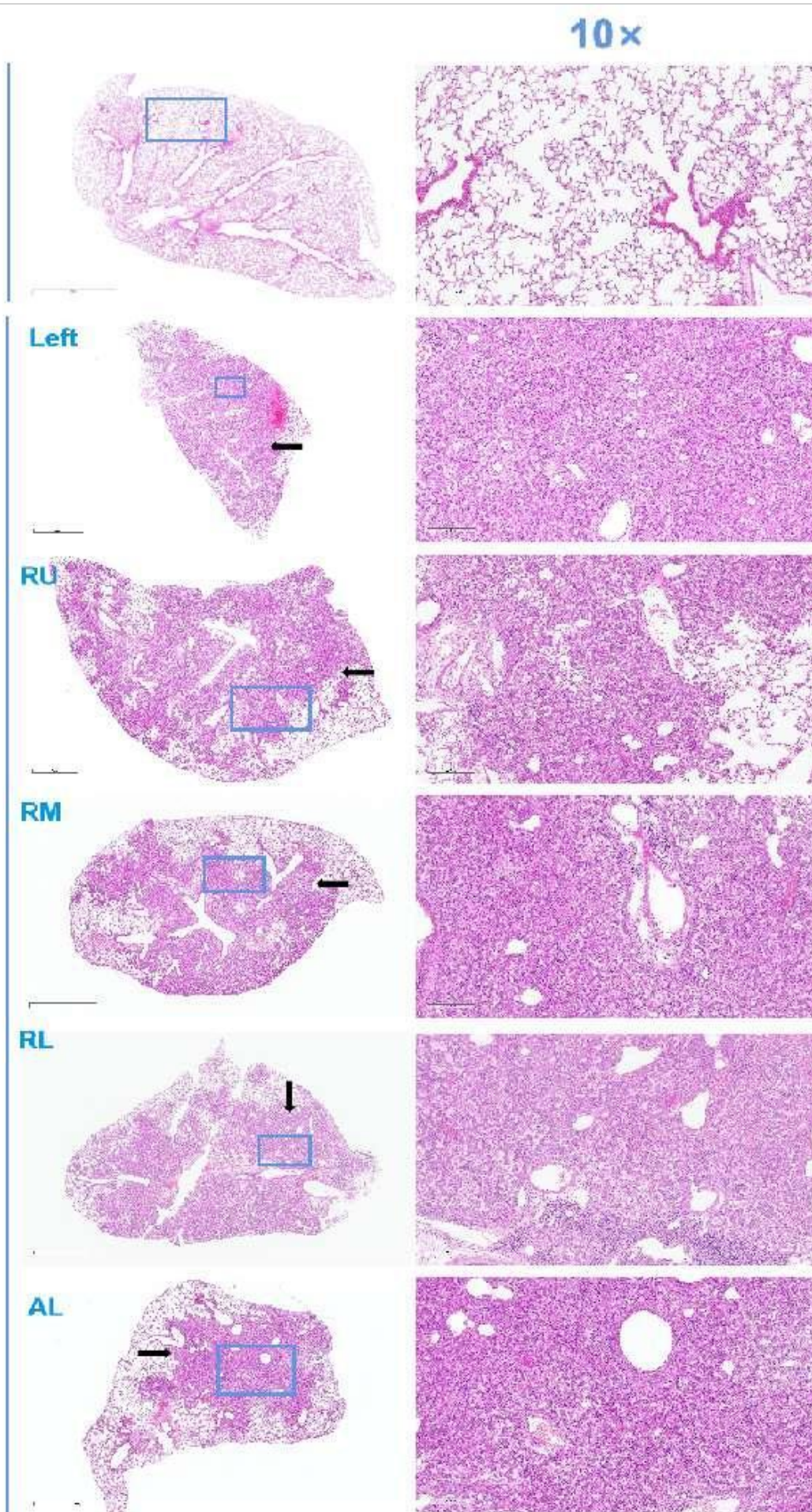


Fig1. The lung histological images were observed under microscope after H&E staining (Black arrows indicated representativetumor).

Lung: Focal inflammatory cell infiltration, Florid proliferation of tubular and glandular structures, infiltrating growth of lung Adenocarcinoma. Left: left lobe; RU: right upper lobe; RM: right middle lobe; RL: right lower Lobe; AL: accessory leaf.

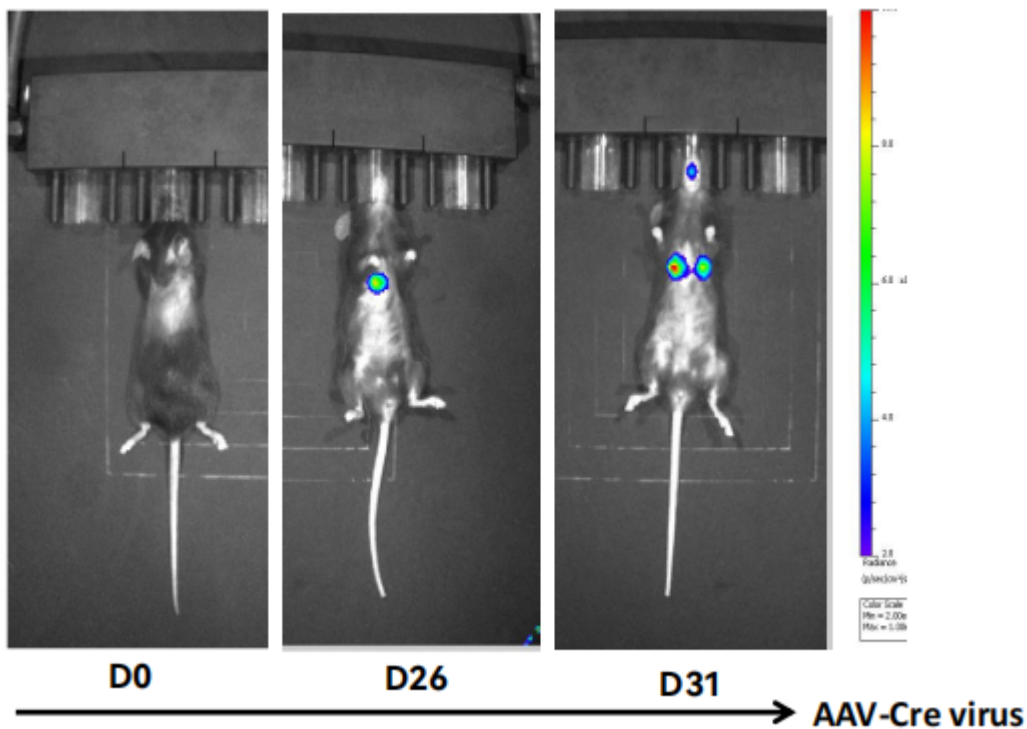


Fig2. The expression of luciferase in R26-CAG-LSL-Kras\*G12C-IRES-Luc mice was detected by *in vivo* imaging. The expression of luciferase in mice was observed on days 0, 26 and 31 by nasal drops infected with AAV-Cre virus.