

# Csf2rb2-2A-Cre

<b>Nomenclature</b>	C57BL/6Smoc- <i>Csf2rb2</i> <sup>em1(2A-Cre)Smoc</sup>
<b>Cat. NO.</b>	NM-KI-210001
<b>Strain State</b>	Embryo cryopreservation

## Gene Summary

<b>Gene Symbol</b> Csf2rb2	<b>Synonyms</b>	Bil3; Il3r; AIC2A; Il3rb; Il3rb2; Betal13; Csfgrmb
	<b>NCBI ID</b>	<a href="#">12984</a>
	<b>MGI ID</b>	<a href="#">1339760</a>
	<b>Ensembl ID</b>	<a href="#">ENSMUSG00000071714</a>
	<b>Human Ortholog</b>	CSF2RB2

## Model Description

2A-Cre expression cassette was knocked into the *Csf2rb2* gene. *Csf2rb2* is also known as colony stimulating factor 2 receptor. When crossed with a strain carrying a gene flanked by loxP sites, the flanked gene will be removed in cells expressing Cre. The gene product has been involved in the modulation of memory.

**Research Application:** Cre tool mice

\*Literature published using this strain should indicate: *Csf2rb2*-2A-Cre mice (Cat. NO. NM-KI-210001) were purchased from Shanghai Model Organisms Center, Inc..

## Validation Data

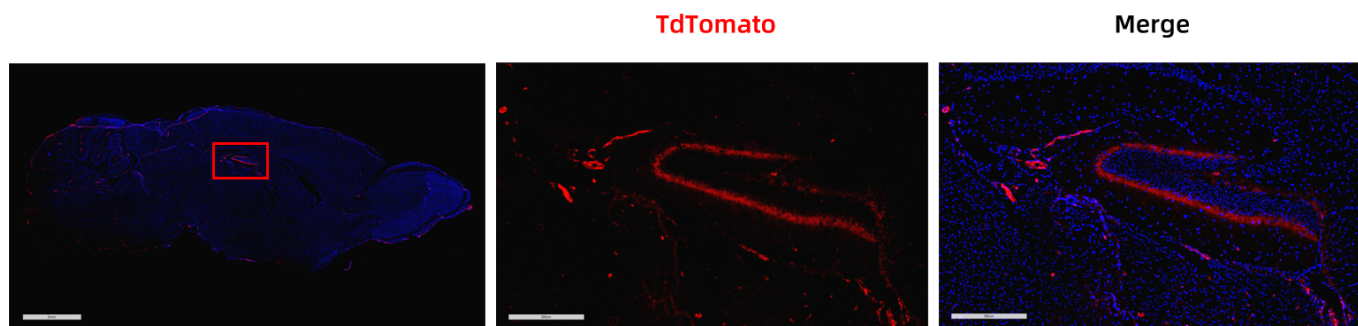


Fig. 1 Cre-mediated recombination in the brain of *Csf2rb2*<sup>Cre/+</sup>; *Rosa26*<sup>tdTomato/+</sup> mouse.

TdTomato(red) expression can be detected in the dentate gyrus of  $Csf2rb2^{Cre/+}$ ;  $Rosa26^{tdTomato/+}$  mouse.

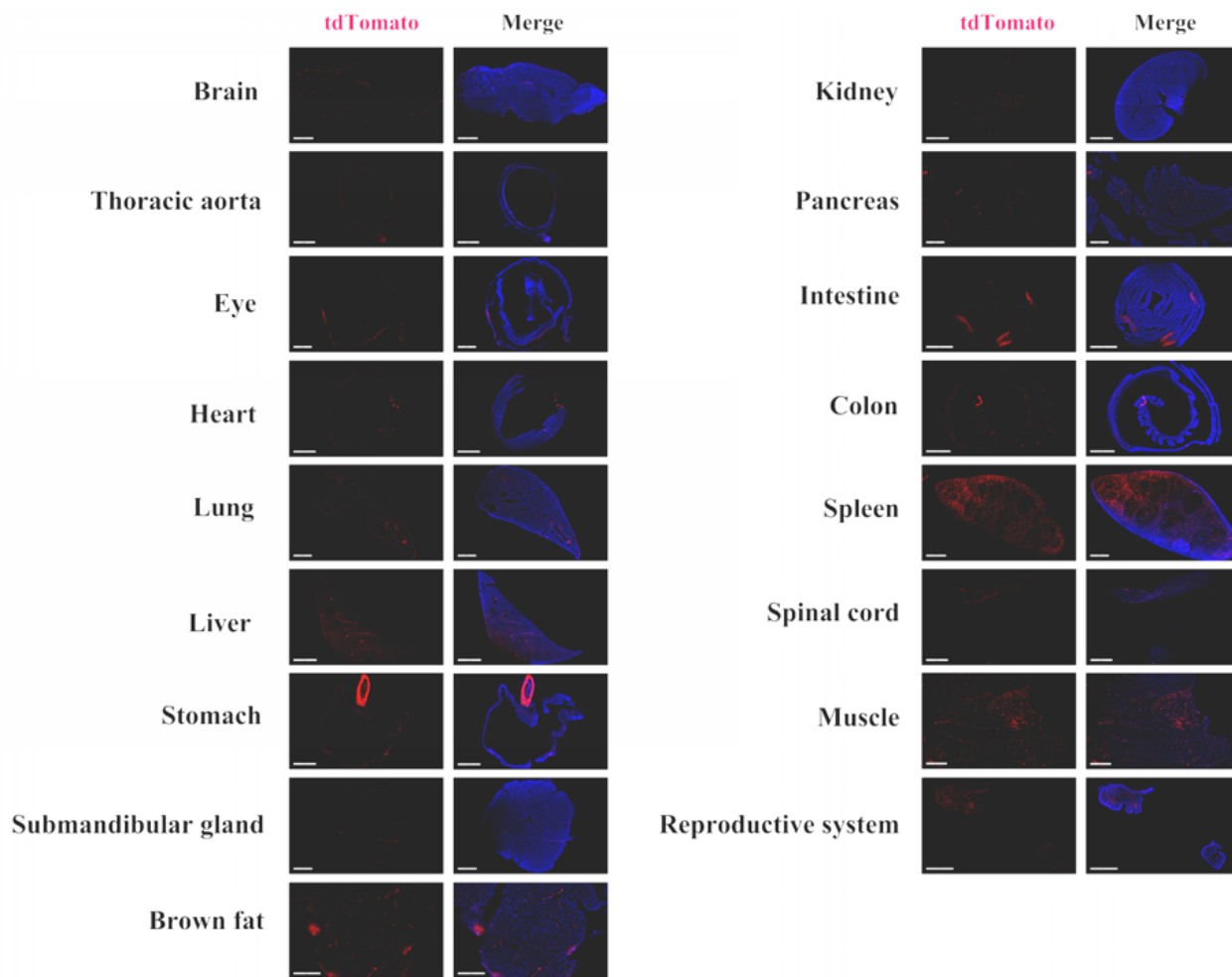


Fig. 2 Detection of tdTomato(red) in various tissues of  $Csf2rb2^{Cre/+}$ ;  $Rosa26^{tdTomato/+}$  mice. TdTomato expression can be detected in the brain, thoracic aorta, eye, heart, lung, liver, stomach, salivary gland, brown fat, kidney, pancreas, peyer patch, colon, spleen, spinal cord, muscle, ovary and uterus. (For more detailed information please contact our technical advisor.)