

MC38-hCD24

Strain Information

Cat. NO.	NM-S13-TM08
Cell Line	MC38- <i>Cd24</i> ^{em1(hCD24)/Smoc}
Strain State	Validation of tumorigenic capacity completed
Model	The endogenous mouse <i>Cd24</i> gene was replaced by human CD24 gene.
Description	*Literature published using this strain should indicate: MC38-hCD24 cell line (Cat. NO. NM-S13-TM08) was purchased from Shanghai Model Organisms Center, Inc..

Validation Data

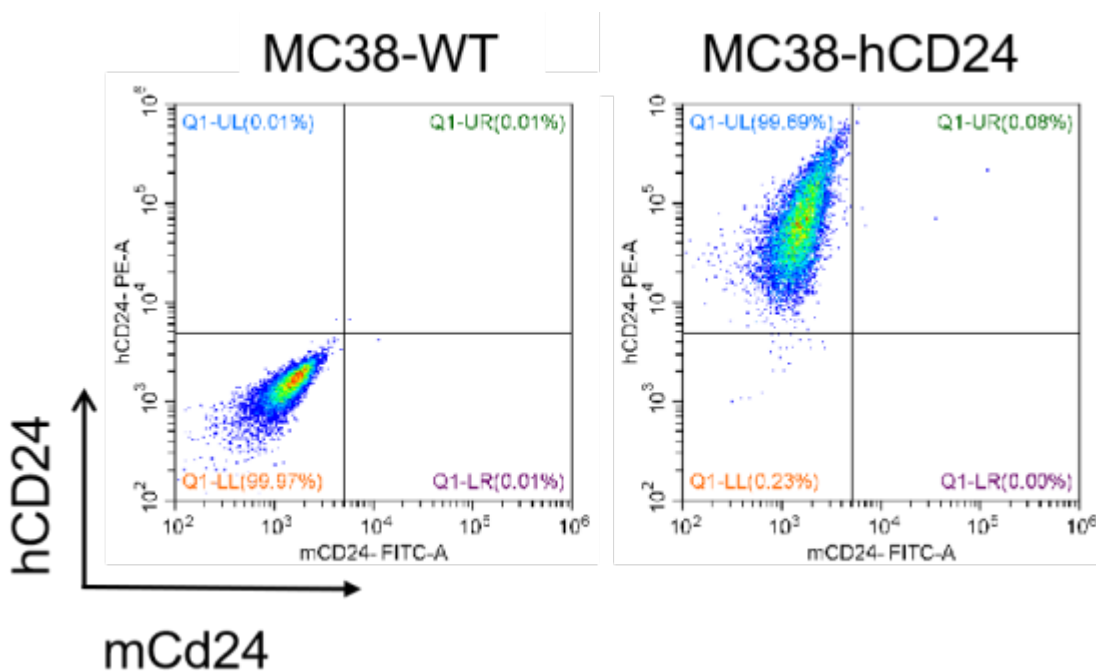


Figure 1. hCD24 expression in wild-type MC38 and MC38-hCD24 cell lines.

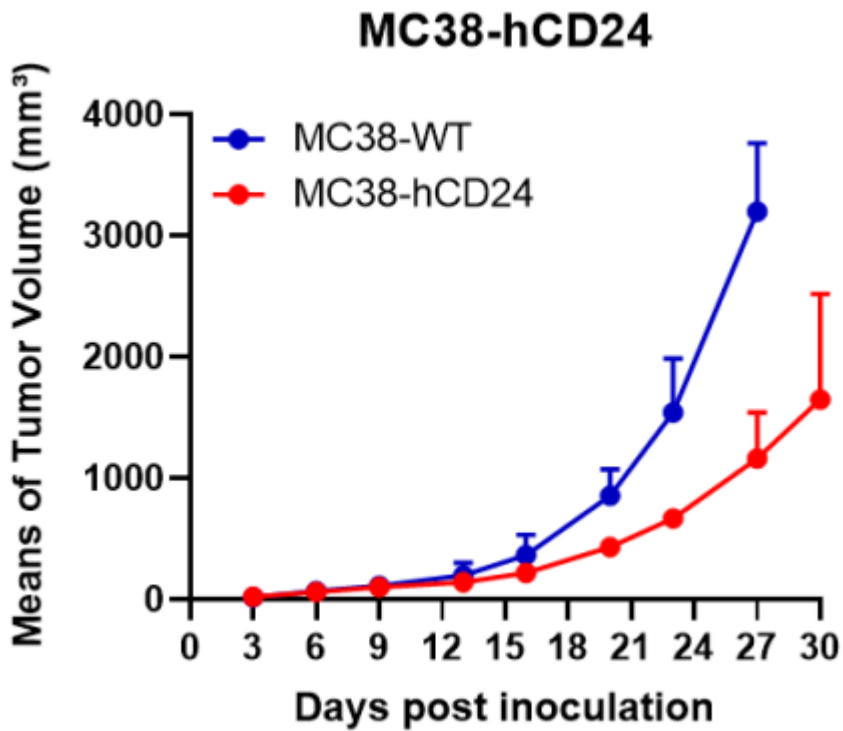


Figure 2. Tumor growth curve of MC38-hCD24 syngeneic model (n=3).

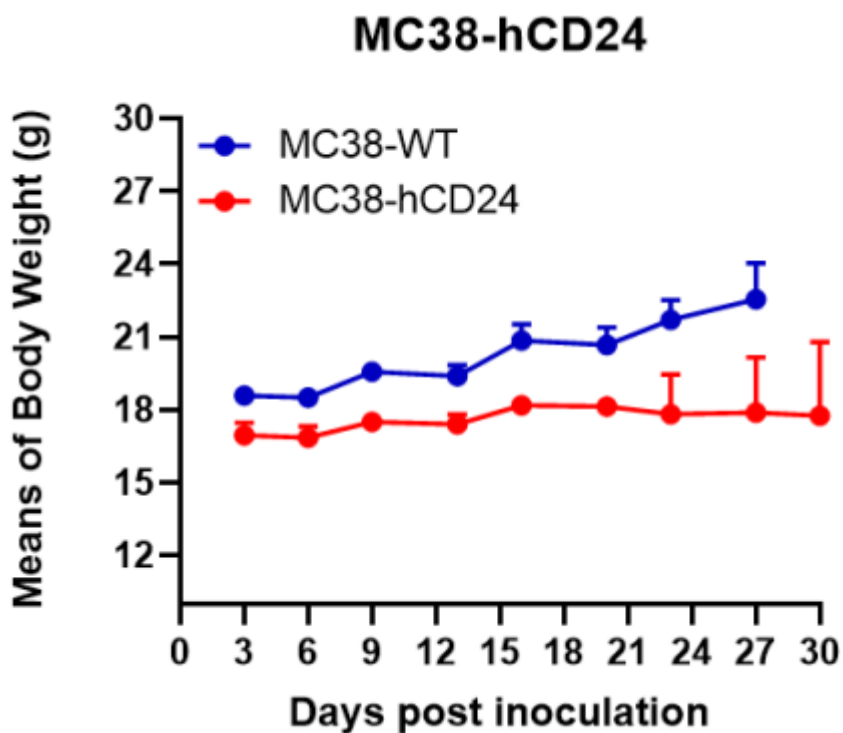


Figure 3. Body weight change of MC38-hCD24 syngeneic model (n=3).

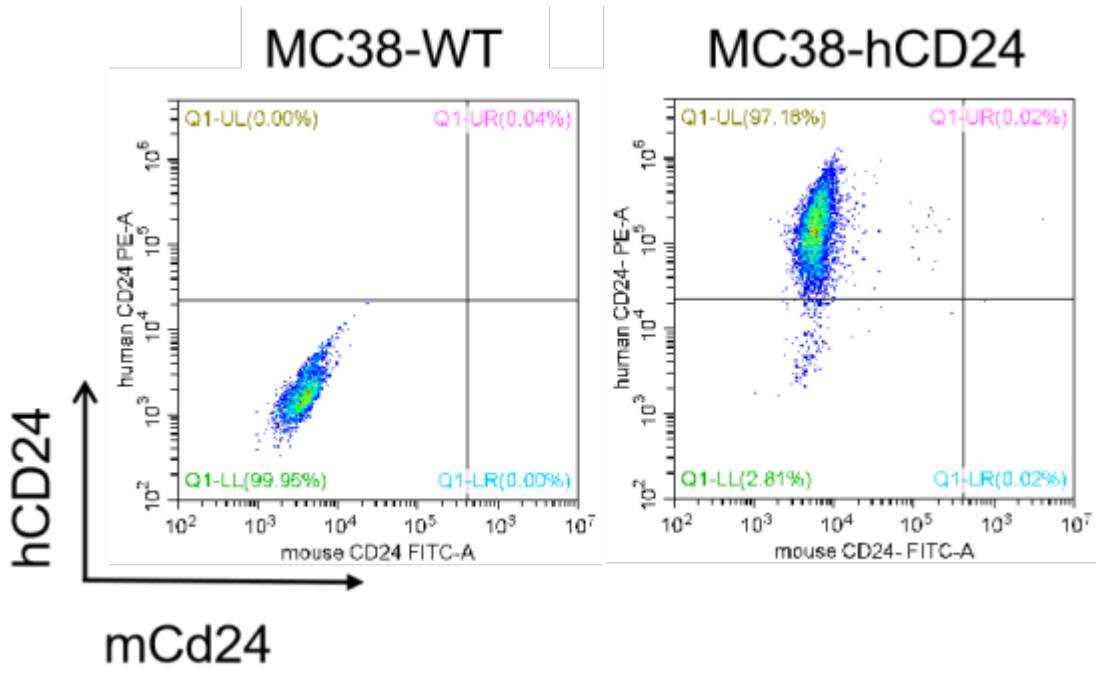


Figure 4. The expression of hCD24 in humanized modified tumors by FACS.