

# CT26-hSIGLEC15

## Strain Information

Cat. NO.	NM-S24A-TM04
Cell Line	CT26-Tg(hSIGLEC15)/Smoc
Strain State	Validation of pharmacodynamic assays completed
Model	These transgenic cells carry humanized SIGLEC15.
Description	*Literature published using this strain should indicate: CT26-hSIGLEC15 cell line (Cat. NO. NM-S24A-TM04) was purchased from Shanghai Model Organisms Center, Inc..

## Validation Data

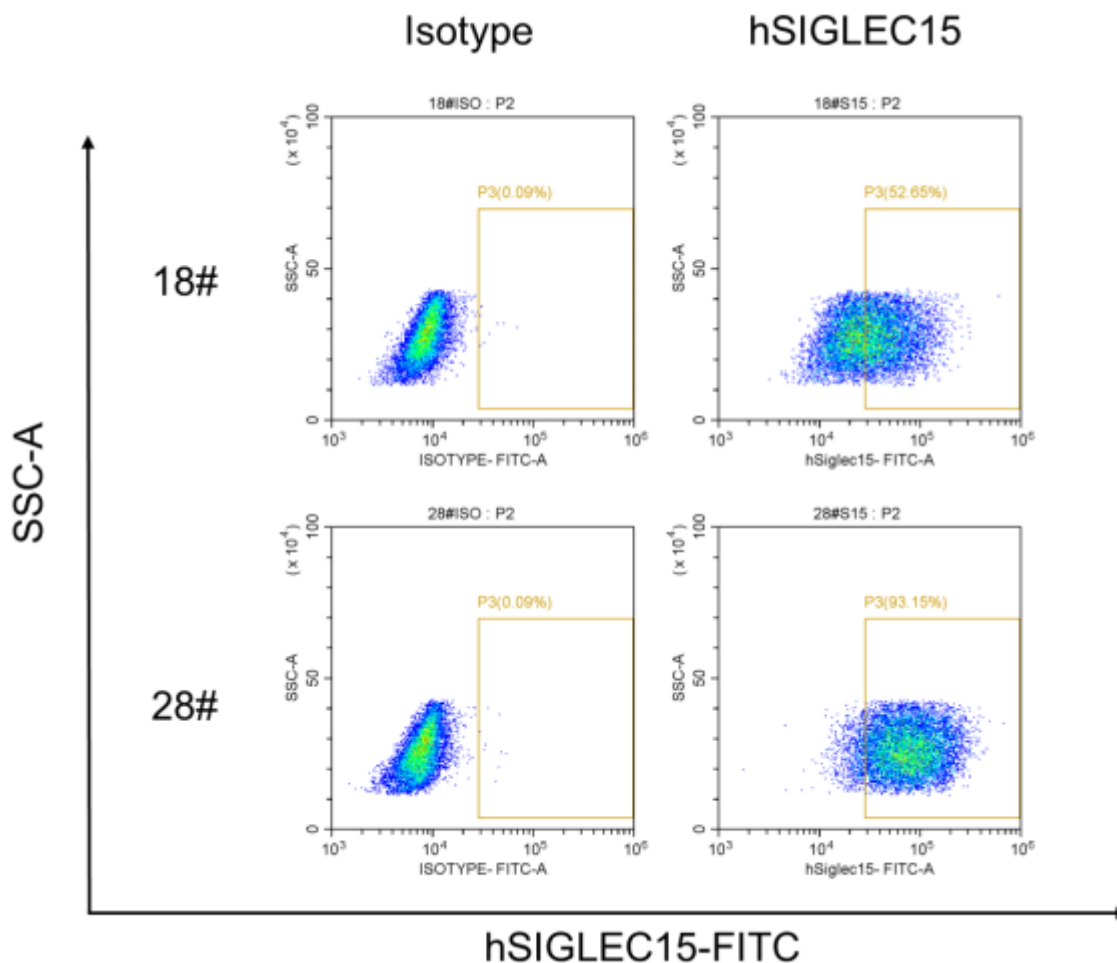


Figure 1. Expression of human SIGLEC15 on CT26-hSIGLEC15 cells was confirmed by flow

cytometry.

CT26-hSIGLEC15 cells and wild type CT26 cells were stained with species-specific anti-SIGLEC15 antibody. FACS analysis shows that human SIGLEC15 expression on CT26-hSIGLEC15 cells was detectable. Human SIGLEC15 expression of 18# and 28# clones were 52.65% and 93.15%.

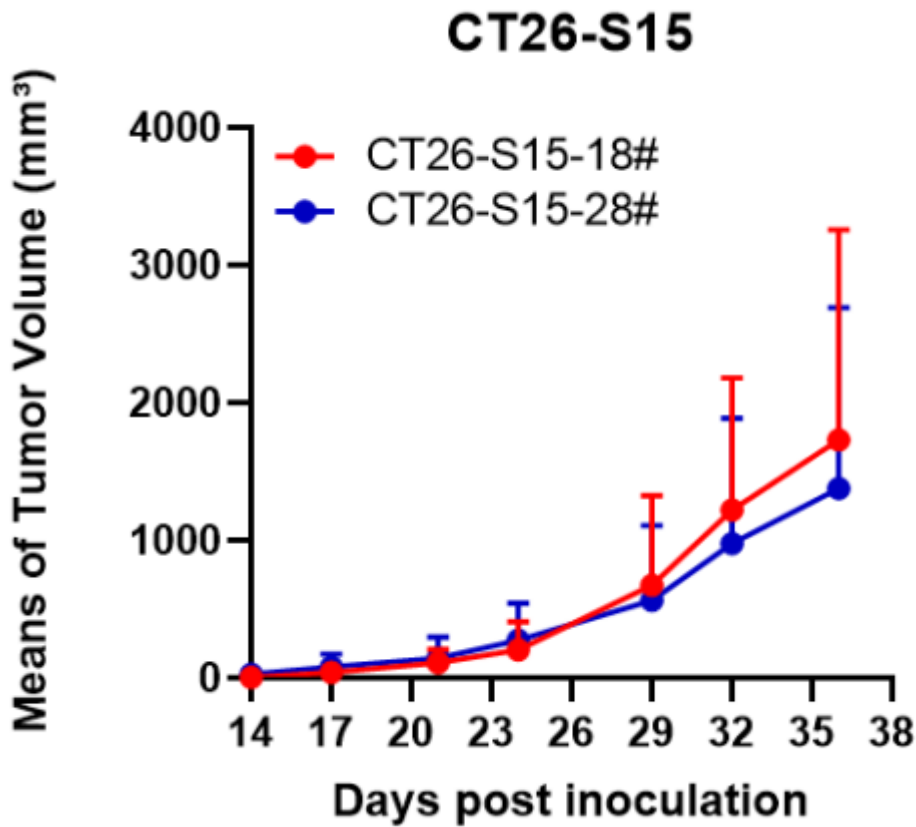


Figure 2. *In vivo* tumor growth curves in humanized CT26-hSIGLEC15 syngeneic model.

BALB/c mice were subcutaneously injected CT26-hSIGLEC15 cells. Tumor growth was monitored by measuring tumor size from day 14 after subcutaneous implantation.

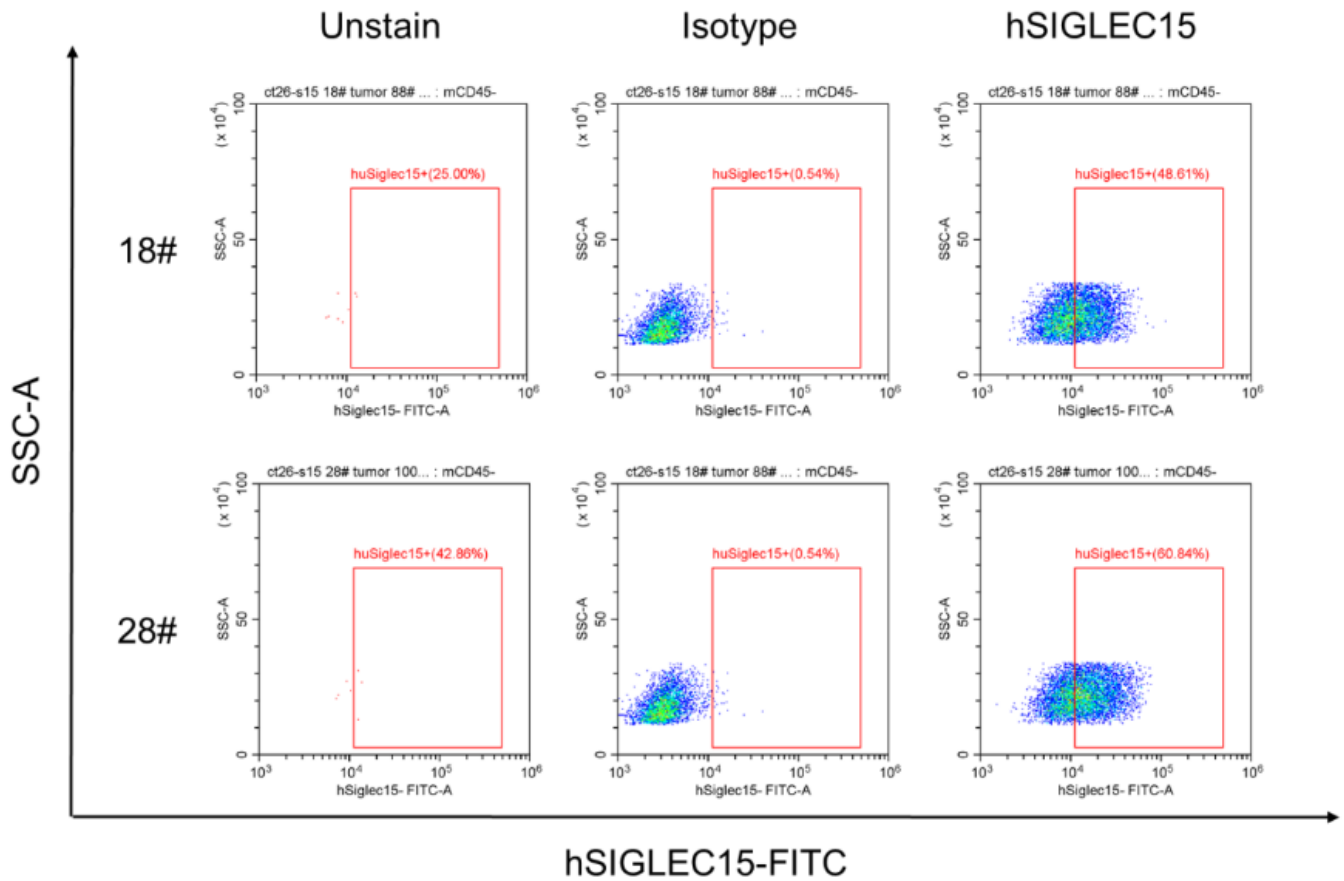


Figure 3. FACS analysis of SIGLEC15 expression on tumor cells derived from humanized CT26-hSIGLEC15 syngeneic model with species-specific anti-SIGLEC15 antibodies.

FACS analysis shows that human SIGLEC15 expression in human SIGLEC15 knock-in tumor were 48.61% (18# clone) and 60.48% (28# clone).