

R26-CAG-LSL-tdTomato-2A-DTR

Nomenclature	C57BL/6Smoc- <i>Gt(ROSA)26Sor</i> ^{em(CAG-LSL-R-tdTomato-2A-DTR)Smoc}
Cat. NO.	NM-KI-210094
Strain State	Repository Live

Gene Summary

Gene Symbol Gt(ROSA)26Sor	Synonyms	R26, ROSA26, AV258896, Gtrg eo26, Gtrosa26, Thumpd3as1
	NCBI ID	14910
	MGI ID	104735
	Ensembl ID	ENSMUSG00000086429

Model Description

These mice harbor a CAG-LSL-R-tdTomato-2A-DTR cassette in the Rosa26 locus generated by homologous recombination.

Research Application: Dre reporter

*Literature published using this strain should indicate: R26-CAG-LSL-tdTomato-2A-DTR mice (Cat. NO. NM-KI-210094) were purchased from Shanghai Model Organisms Center, Inc..

Validation Data

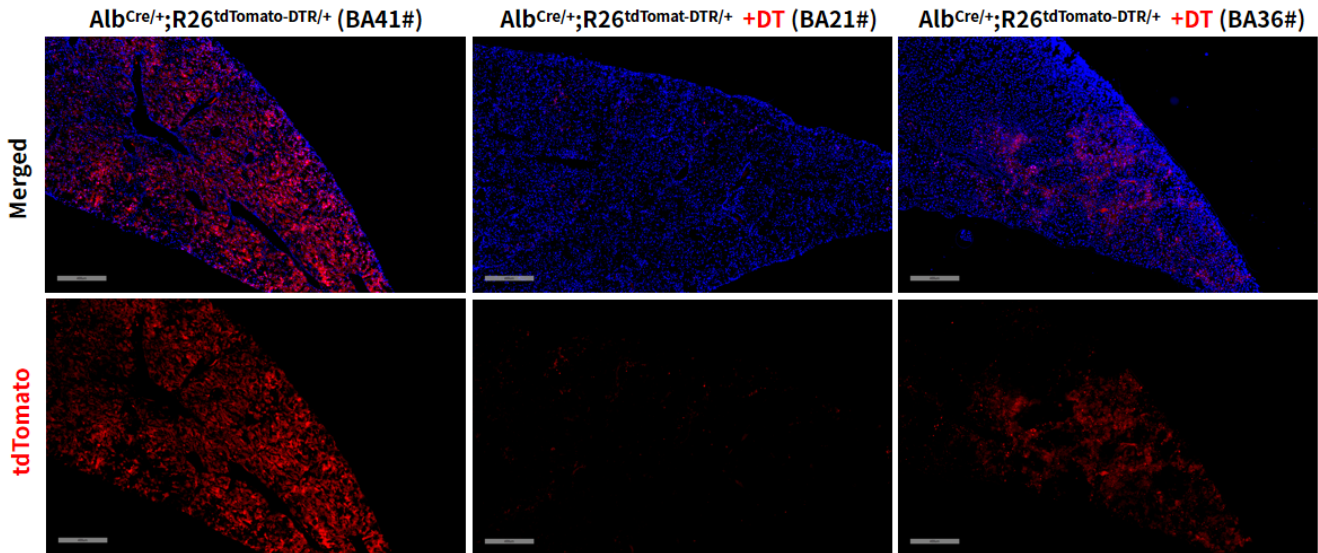


Fig1. DTR mediated cell knockout in liver of R26-CAG-LSL-tdTomato-2A-DTR mice.

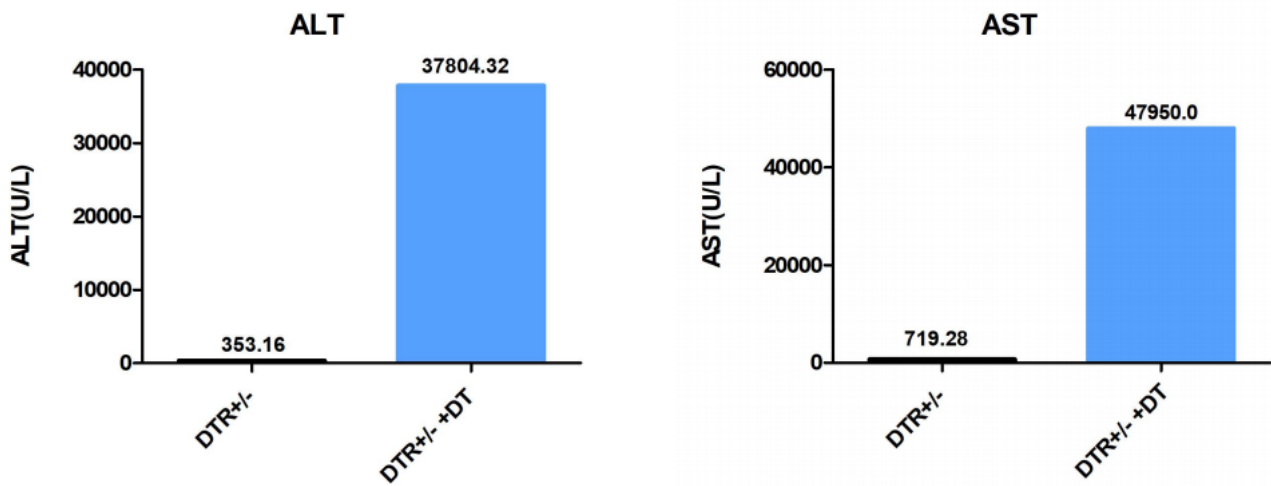


Fig2. Detection of alanine aminotransferase (ALT) and aspartate aminotransferase (AST) expression in the liver of R26-CAG-LSL-tdTomato-2A-DTR mice.